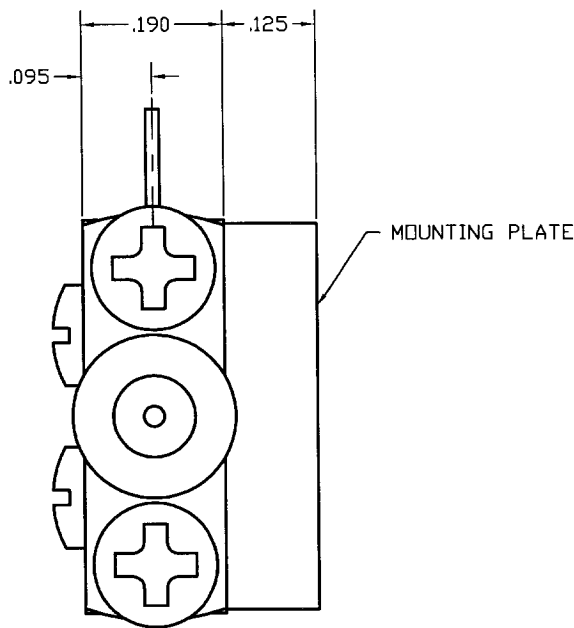
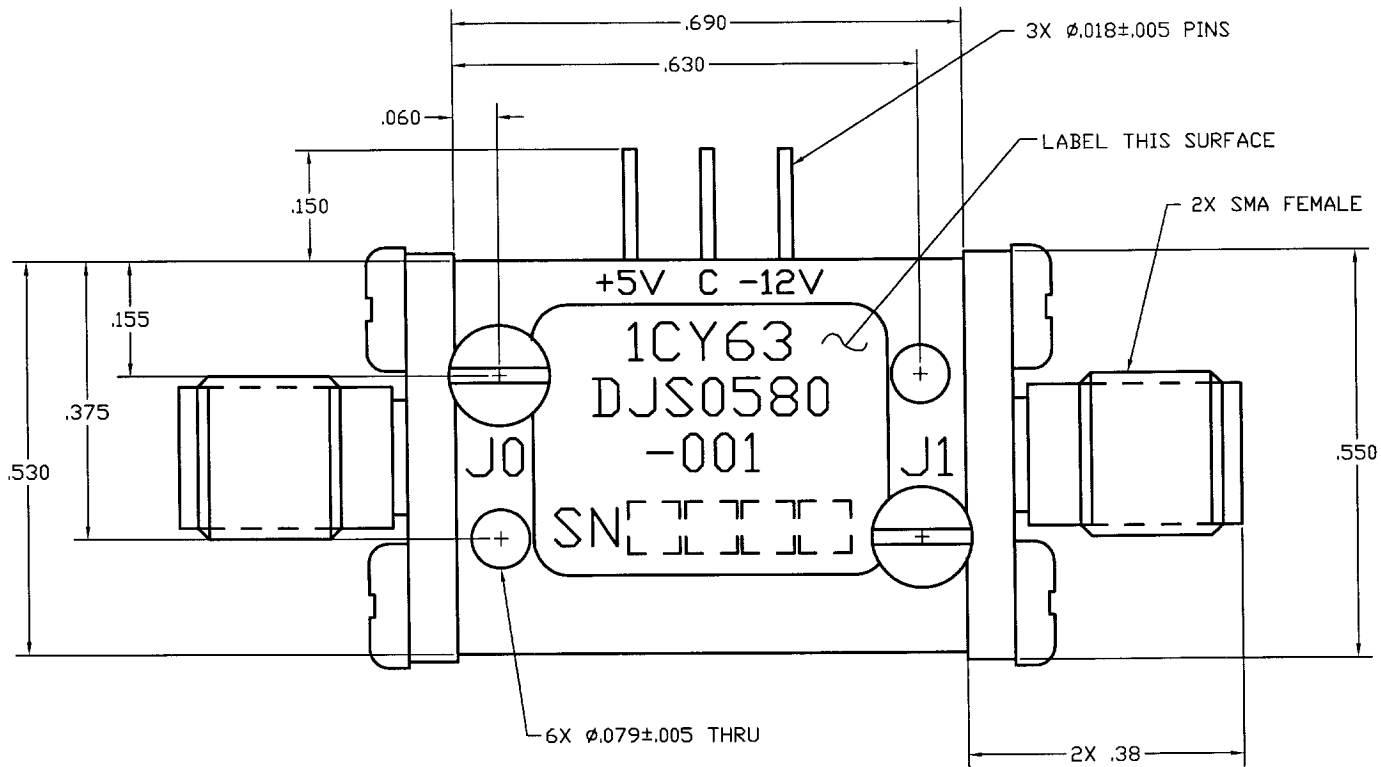


COMPUTER GENERATED DRAWING  
MANUAL CHANGES NOT AUTHORIZED

REVISIONS

REV.	DESCRIPTION	DATE	RELEASED BY
NC	INITIAL RELEASE	8-31-91	LD
A	REV PER ECN: 3475	11-04-92	LD
B	REV PER ECN: 6784	4-12-99	JLA
C	REV PER ECN: 6822, 9830	3-4-05	



SPECIFICATIONS:

FREQUENCY RANGE:	0.5 - 8.0 GHz
INSERTION LOSS:	0.5-4.0 GHz 1.1 dB MAX 4.0-8.0 GHz 1.4 dB MAX
VSWR(50 OHM):	1.80:1 MAX
ISOLATION:	0.5-8.0 GHz 60 dB MIN
SWITCHING SPEED:	25nSEC
TEMPERATURE	
OPERATING	-55°C TO +100°C
STORAGE	-55°C TO +100°C
CONTROL:	TTL LOW: INSERTION LOSS TTL HIGH: ISOLATION
BIAS CONDITIONS:	+5V±0.5V @ 50 mA MAX. -12V @ 50 mA MAX.

ITEM	QTY REQ'D	FSCM NO.	PART OR IDENTIFICATION NO.	NOMENCLATURE OR DESCRIPTION	MATERIAL SPECIFICATION
PARTS LIST					
UNLESS OTHERWISE SPECIFIED DIMENSIONS ARE IN INCHES TOLERANCES ARE: FRACTIONS DECIMALS ANGLES ± .XX± ± .XXX± .005			CONTRACT NO.		
MATERIAL:			APPROVALS		
FINISH:			DATE		
LIST OF MAT'L			DRAWN: M SEIPEL		
USED ON			CHECKED:		
APPLICATION			DESIGN ENG. LD		
DO NOT SCALE DRAWING			MAT. & PROCESSES		
			Q.A.		
			TITLE:		
			SMT SIERRA MICROWAVE TECHNOLOGY		
			OUTLINE FOR DJS0580-001		
			SIZE FSCM NO. DWG NO. REV		
			B 1CY63 605-0071-001 C		
			BRDR SCALE SHEET OF		