

Integrated Transceiver

2.4 - 2.5 GHz

MD58-0001

V 2.00

Features

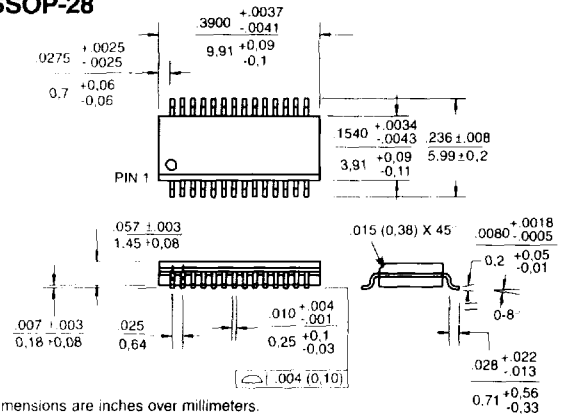
- Fully Integrated Transmit and Receive Functions
- Operates Over +3 V to +5 V Supply
- Low 30 mA Receive Current (Gain = 13.5 dB)
- High Receiver Dynamic Range (CIP₃ = +2 dBm, SSB NF = 4dB)
- On-Chip Receive Image Rejection (18 dB @ 350 MHz IF)
- Low Transmit Mode Current: 40 mA @ 5 V
- Transmit Spurious In-Band, -70 dBc
- Receive, Transmit & Standby Operation Modes
- Low Cost SSOP 28-Lead Plastic Package

Description

M/A-COM's MD58-0001 is a highly integrated front end transceiver with exceptional RF performance. The transceiver is ideally suited for FSK systems in the 2.4 - 2.5 GHz ISM band. The receive functions include an LNA, image reject filter, balanced mixer, with a balanced IF output for high data rate applications. The transmit chain utilizes a balanced IF input to drive the upconverting mixer and an RF combiner to provide exceptional output spurious performance. The transceiver applications include WLAN, WPBX and portable data collection terminals, where battery operation demands low current consumption. The transceiver can be used stand-alone for low-power transmission, or in conjunction with M/A-COM's AM55-0001 or AM55-0007 power amplifier for high power applications.

The MD58-0001 is a GaAs MMIC and is fabricated using an industry standard 1-micron process. This process features full chip passivation for increased performance and reliability.

SSOP-28



Dimensions are inches over millimeters.

Ordering Information

Part Number	Description
MD58-0001	SSOP 28-Lead Plastic Package
MD58-0001TR	Forward Tape & Reel*
MD58-0001RTR	Reverse Tape & Reel*
MD58-0001SMB	Designer's Kit

* If specific reel size is required, consult factory for part number assignment.

Typical Electrical Specifications

Test Conditions: RF = 2.4 - 2.5 GHz, IF = 350 MHz, LO = -5 dBm, V_{DD} = +5 V ± 5%, V_{GG} = -5 V ± 10%⁴, T_A = +25°C

Parameter	Test Conditions	Units	Min.	Typ.	Max.
Receive Mode					
RF Frequency Range	Each IF output impedance ¹ externally matched to 50 Ω.	GHz	2.4		2.5
IF Frequency Range		MHz	200		400
Conversion Gain	The balanced IF outputs are combined with a 180° hybrid.	dB	10	13.5	
SSB Noise Figure		dB		4	5.5
Input P _{1dB}		dBm		-8	
V _{DD} (+5V) Current		mA		30	45
V _{GG} (-5V) Current		mA		0.5	1.5
Transmit Mode					
RF Frequency Range	IF input ² of -8 dBm is applied to a 180° hybrid to inject a balanced IF input.	GHz	2.4		2.5
IF Frequency Range		MHz	200		400
RF Output Power		dBm		-2	
LO Leakage Level		dBm		-20	
Output Spurious Levels in RF Band ³		dBc		-65	
V _{DD} (+5 V) Current		mA		40	60
V _{GG} (-5 V) Current		mA		0.5	1.5
Standby Mode					
V _{DD} (+5 V) Current		mA		0.5	1.5
V _{GG} (-5 V) Current		mA		0.5	1.5

1. The receive IF output impedance is 300 ohms for each IF output (600 ohms differential). An external LC circuit is used for impedance matching and bias injection.

2. The transmit IF input impedance is 100 ohms for each IF input (200 ohms differential)

3. In-band spurious, 7IF and 2 LO-5IF.

4. See performance charts for V_{DD} = +3 V and V_{GG} = -3 V.

Specifications Subject to Change Without Notice.

Absolute Maximum Ratings¹

Parameter	Absolute Maximum
Max. Input Power	+20 dBm
Operating Voltages	$V_{DD} = 7\text{ V}$ $V_{GG} = -7\text{ V}$
Operating Temperature	-40°C to +85°C
Storage Temperature	-65°C to +150°C

- Exceeding these limits may cause permanent damage.
- Ambient temperature (T_A) = +25°C

Transceiver Truth Table

Pins	Receive Mode	Transmit Mode	Standby Mode
4, 13 (Rx LOGIC)	1	0	0
3, 16 (Tx LOGIC)	0	1	0
28 (LO LOGIC)	1	1	0

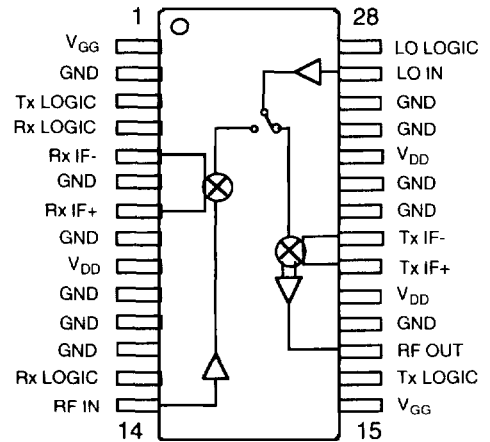
"0" = -5 V @ 100 μA Typ. to -7 V @ 200 μA Typ.

"1" = 0 V to -0.2 V @ 100 μA Typ.

Pin Description

Pin No.	Pin Name	Description
1	V_{GG}	Negative Supply Voltage (-5 V)
2	GND	DC and RF Ground
3	Tx LOGIC	Logic control line for transmit functions
4	Rx LOGIC	Logic control line for receive functions
5	Rx IF -	Receive IF output, first of two balanced IF outputs, external LC match and bias injection
6	GND	DC and RF Ground
7	Rx IF +	Receive IF output, second of two balanced IF outputs, external LC match and bias injection
8	GND	DC and RF Ground
9	V_{DD}	Positive Supply Voltage (+5 V)
10	GND	DC and RF Ground
11	GND	DC and RF Ground
12	GND	DC and RF Ground
13	Rx LOGIC	Logic control line for receive functions
14	RF IN	RF input to the receive LNA, internally AC coupled, $Z_{in} = 50\ \Omega$
15	V_{GG}	Negative Supply Voltage (-5 V)
16	Tx LOGIC	Logic control line for transmit functions
17	RF OUT	Transmit RF output, internally AC coupled, $Z_{out} = 50\ \Omega$
18	GND	DC and RF Ground
19	V_{DD}	Positive Supply Voltage (+5 V)
20	Tx IF +	Transmit IF input, first of two balanced IF inputs, externally AC coupled
21	Tx IF -	Transmit IF input, second of two balanced IF inputs, externally AC coupled
22	GND	DC and RF Ground
23	GND	DC and RF Ground
24	V_{DD}	Positive Supply Voltage (+5 V)
25	GND	DC and RF Ground
26	GND	DC and RF Ground
27	LO IN	LO buffer input, internally AC coupled, $Z_{in} = 50\ \Omega$
28	LO LOGIC	Logic control line for LO buffer functions

Functional Diagram



Specifications Subject to Change Without Notice.

M/A-COM, Inc.

16-33

North America: Tel. (800) 366-2266
Fax (800) 618-8883

■ Asia/Pacific: Tel. +81 (03) 3226-1671
Fax +81 (03) 3226-1451

■ Europe: Tel. +44 (1344) 869 595
Fax +44 (1344) 300 020

General Information

The MD58-0001 is a highly integrated MMIC transceiver designed for the 2.4 - 2.5 GHz ISM band. The transceiver provides exceptional RF performance while consuming low DC current and is packaged in low cost plastic package. It is ideal for light weight battery operated portable radio systems.

The receive chain consists of an LNA, image reject filter, balanced mixer and balanced IF output buffers. The balanced IF outputs allow for a balanced mixer design for the second IF down conversion. The entire receiver consumes only 30 mA while achieving 13.5 dB gain and 4 dB of SSB NF with an IIP3 of +2 dBm. The transmit chain consists of a double-balanced mixer and RF combiner to provide low in-band output spurious while consuming only 40 mA. The LO signal is amplified by an on-chip buffer and injected to the receive and transmit mixers by a LO switch.

The RF output, RF input and LO input ports are designed for a 50-ohm impedance. All RF ports are internally AC coupled. The receive IF output impedance is 300 ohms for each IF output (600-ohm differential). For the Receive IF outputs, external components are used for impedance matching and bias injection. The transmit IF inputs are designed for 100-ohm impedance (200-ohm differential).

Transceiver Operation Modes

The transceiver is designed for three modes of operation, transmit, receive and stand-by. These modes are set by using three logic lines: one for receive, a second for transmit and a third logic line for the LO buffer. These logic lines allow rise times within micro seconds for fast "turn-on" and "turn-off" of each function. (See the transceiver truth table for logic and voltage levels.)

Bias Sequence

The transceiver bias sequence is as follows. Always make the ground connection first, then apply the V_{GG} supply voltage. After the V_{GG} supply voltage, connect all logic lines to the logic "0" so the transceiver will bias up in the stand-by mode when the positive supply is connected. Then apply the V_{DD} supply voltage and change the logic levels as desired.

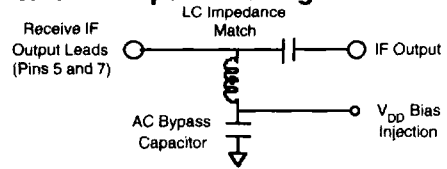
External Components and Circuit Board Layout

This data sheet contains a suggested PCB layout and schematic to follow when designing a full radio board. For more detailed information, contact the number listed below. The external components serve two basic functions. The first purpose is to bypass the power supply lines since all power supply lines require external capacitive bypass to present an AC short over a wide frequency band. The second use is for LC matching/bias injection for the receive IF output, as described below.

Receive IF Output Impedance

The receiver is designed for an output impedance of 300 ohms for each IF output (600-ohm differential). The receive IF output also requires a V_{DD} bias for each IF output. Using an external "LC match," as shown in the figure below, the IF output impedance matching and bias injection can be accommodated simultaneously. The table below shows suggested matching elements for various IF frequencies when matching to 50 ohms. Element values may vary slightly depending on component vendor and radio board layout.

Receive IF Output Matching



Receive IF Frequency Matching

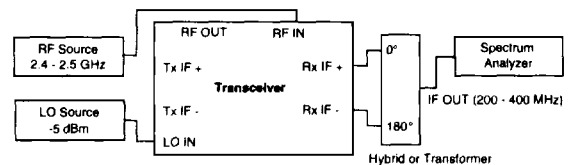
IF Frequency (MHz)	Shunt Inductor	Series Capacitor
200 - 249	90 nH	6 pF
250 - 299	68 nH	4 pF
300 - 349	58 nH	4 pF
350 - 400	47 nH	3 pF

Test Set-Up Information

The following two figures illustrate the test set-up suggested for transceiver evaluation, indicating the power levels used for the data displayed in the typical performance figures.

Receive Test Set-Up

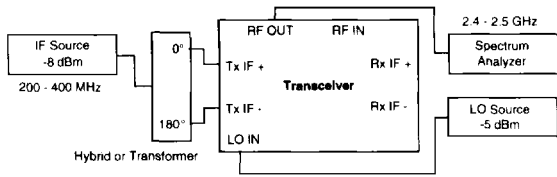
The receiver test set-up uses an IF hybrid (i.e. M/A-COM H-183-4) to combine the two IF outputs. The receive gain is measured as the total combined IF output power. Receiver small signal gain measurements are made for -20 dBm RF input power. The figure below shows the typical receiver test set-up. The LO drive level is -5 dBm. Transmit ports should be terminated in 50 ohms.



Specifications Subject to Change Without Notice.

Transmit Test Set-Up

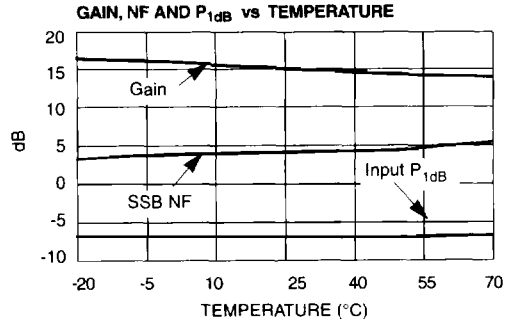
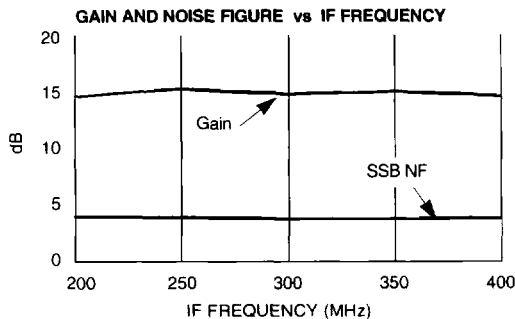
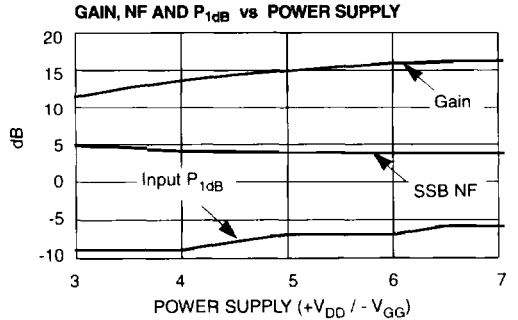
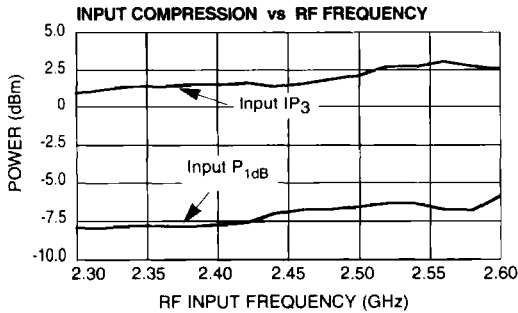
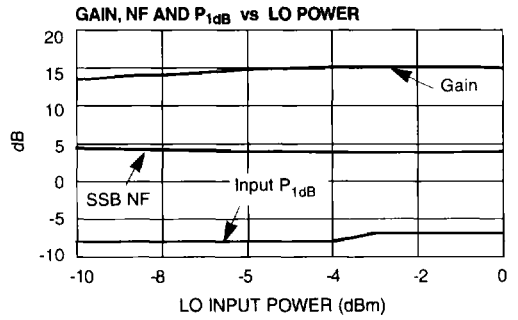
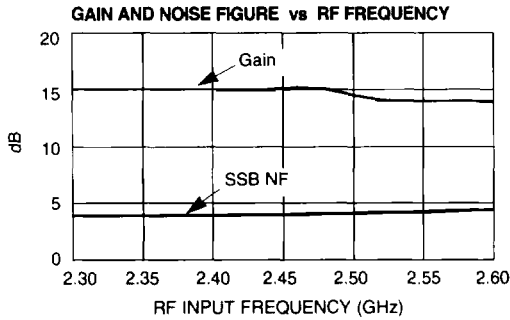
The transmit test set-up uses an IF hybrid to apply a balanced IF input to the transceiver. The IF input power level is typically -9 dBm and the LO input power level is -5 dBm. Receive ports should be terminated in 50 ohms.



Typical Measured Results

Measured results for a typical board mounted transceiver sample are shown in the performance curve section of this data sheet. The measurements were made using the test set-up described above for receive and transmit. The board used for these measurements is the MD58-0001SMB, or transceiver evaluation board. This evaluation board can be ordered for engineering evaluation.

Typical Receiver Performance Characteristics¹



1. Test conditions (unless otherwise specified): RF = 2.45 GHz, IF = 350 MHz, LO Input Power = -5 dBm (@ 2.1 GHz), V_{DD} = +5 V, V_{GG} = -5 V, T_A = +25°C

Specifications Subject to Change Without Notice.

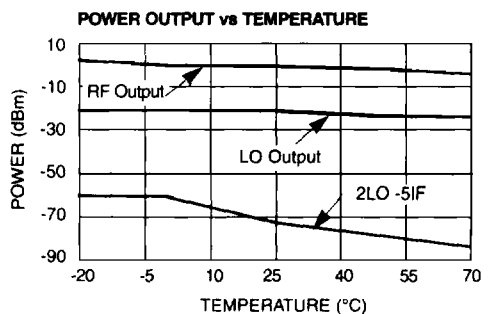
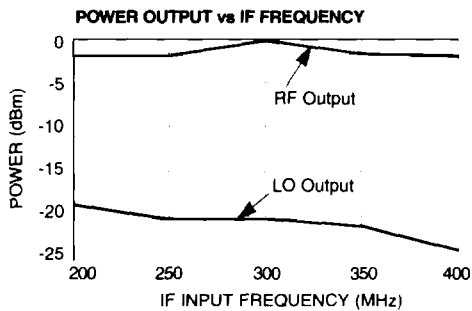
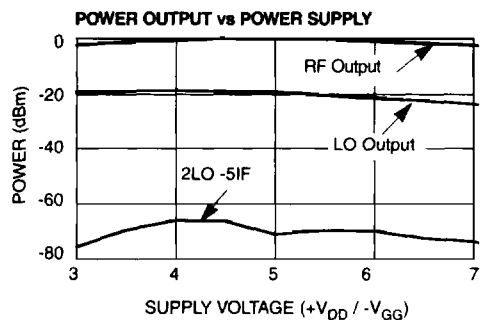
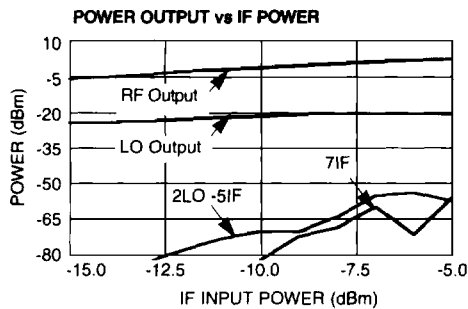
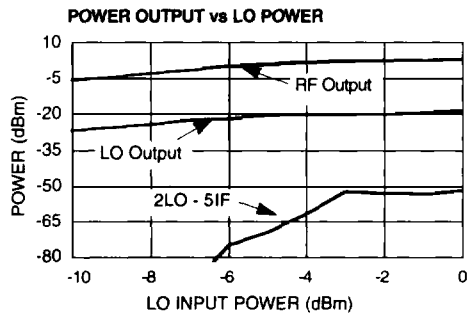
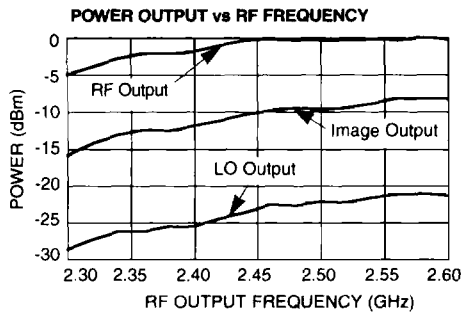
M/A-COM, Inc.

North America: Tel. (800) 366-2266
Fax (800) 618-8883

Asia/Pacific: Tel. +81 (03) 3226-1671
Fax +81 (03) 3226-1451

Europe: Tel. +44 (1344) 869 595
Fax +44 (1344) 300 020

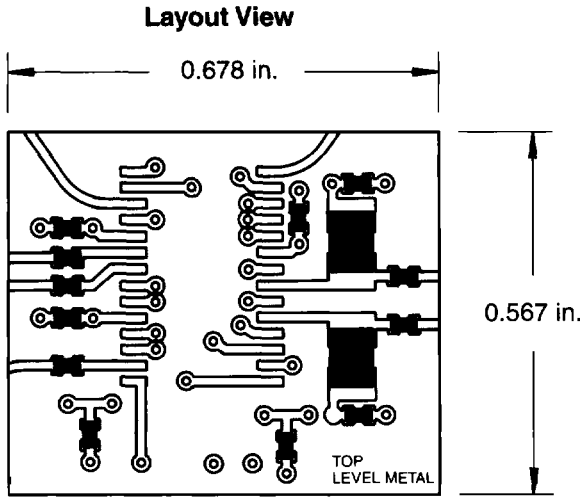
Typical Transmitter Performance Characteristics¹



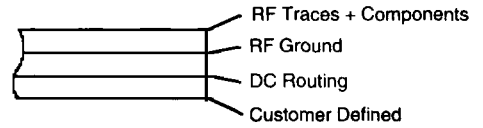
1. Test conditions (unless otherwise specified): RF = 2.45 GHz, IF = 350 MHz, LO Input Power = -5 dBm (@ 2.1 GHz), V_{DD} = +5 V, V_{GG} = -5 V, T_A = +25°C

Specifications Subject to Change Without Notice.

Recommended PCB Configuration



Cross Section View

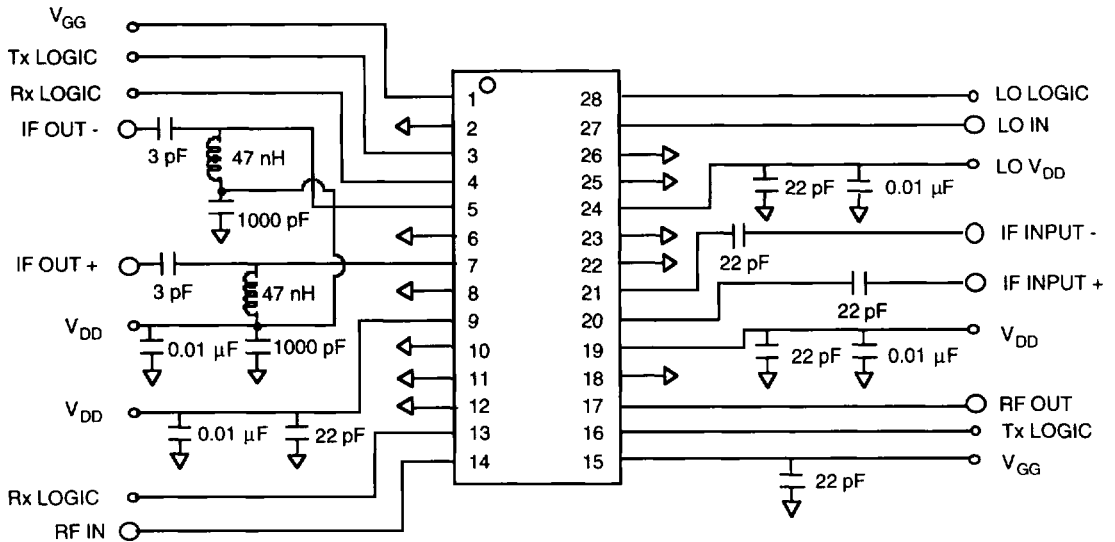


The PCB dielectric between RF traces and RF ground layers should be chosen to reduce RF discontinuities between 50-Ω lines and package pins. M/A-COM recommends an FR-4 dielectric thickness of 0.008 in. (0.2 mm), yielding a 50-Ω line width of 0.015 in. (0.38 mm). The recommended metalization thickness is 1 oz. copper.

Biasing Procedure

The MD58-0001 requires that V_{GG} bias be applied prior to **any** V_{DD} bias. Permanent damage may occur if this procedure is not followed.

External Circuitry



Specifications Subject to Change Without Notice.

M/A-COM, Inc.

16-37

North America: Tel. (800) 366-2266
Fax (800) 618-8883

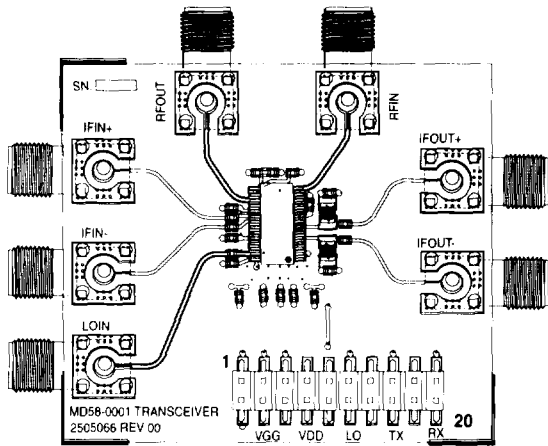
Asia/Pacific: Tel. +81 (03) 3226-1671
Fax +81 (03) 3226-1451

Europe: Tel. +44 (1344) 869 595
Fax +44 (1344) 300 020

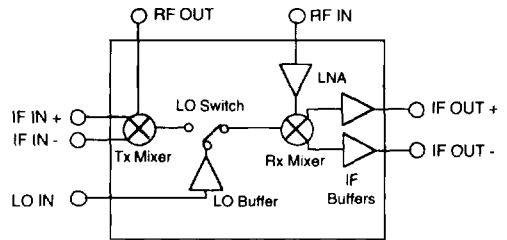
Designer's Kit (MD58-0001SMB)

The MD58-0001SMB Designer's Kit allows for immediate evaluation of M/A-COM's MD58-0001 integrated transceiver without the delays or cost of designing evaluation test boards. The evaluation board consists of the MD58-0001, recommended external surface mount circuitry, RF connectors and a DC multi-pin connector, all mounted to a multi-layer FR-4 PCB. The Designer's Kit also includes any additional application notes, a floppy disk containing typical performance data and a .DXF file of the recommended PCB layout. The MD58-0001SMB evaluation PCB and block diagram are illustrated below with all functional ports labeled.

Transceiver Sample Board



Functional Block Diagram



DC Connector Pinout

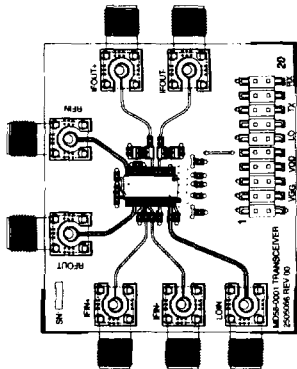
Pin	Function/DC Volt	Device Pin Number
1	GND/0V	GND PINS
2	GND/0V	GND PINS
3	V _{GG} /-5 V	1, 15
4	V _{GG} /-5 V	1, 15
5	V _{DD} /+5 V	5, 7, 9, 19, 24
6	V _{DD} /+5 V	5, 7, 9, 19, 24
7	N/C	N/C
8	N/C	N/C
9	N/C	N/C
10	N/C	N/C

Pin	Function/DC Volt	Device Pin Number
11	LO LOGIC	28
12	LO LOGIC PULLUP	N/C
13	N/C	N/C
14	N/C	N/C
15	Tx LOGIC	3, 16
16	Tx LOGIC PULLUP	N/C
17	N/C	N/C
18	N/C	N/C
19	Rx LOGIC	4, 13
20	Rx LOGIC PULLUP	N/C

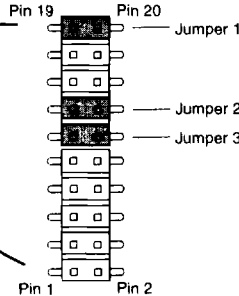
Note: 5% tolerance for +5 V, 10% tolerance for -5 V

Specifications Subject to Change Without Notice.

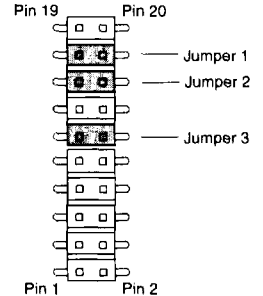
PCB DC Connector Jumper Settings



Jumpers
(Position 1, Receive Mode)



Jumpers
(Position 2, Transmit Mode)



- Jumper 1 (Receive Control) Position 1 = Receive Functions "On"
Position 2 = Receive Functions in "Sleep Mode"
- Jumper 2 (Transmit Control) Position 1 = Transmit Functions in "Sleep Mode"
Position 2 = Transmit Functions "On"
- Jumper 3 (LO Control) Position 1, Position 2 = LO Buffer Function "On,"
Remove Jumper to disable LO Buffer.

MD58-0001SMB Biasing Procedure

In order to prevent transients which may damage the MMIC, please adhere to the following procedure.

- Turn on all power supplies and set all voltages to 0 volts BEFORE connecting the power supplies to the DC connector.
- Connect pin 1 or 2 to ground.
- Set jumpers for desired test mode.
- Apply a -5.0 volt supply to DC connector pin 3 or 4 (V_{GG}).
- Apply a +5.0 volt supply to the DC connector pin 5 or 6 (V_{DD}).
- Adjust V_{GG} supply to -5 volts.
- Adjust all V_{DD} supplies to +5 volts.
- Hot switching of jumpers will not damage device.
- To power off, reverse above procedure.
 1. Set V_{DD} to 0 volts.
 2. Set V_{GG} to 0 volts.
 3. Disconnect bias lines from DC connector.
 4. Turn off power supplies.

Evaluation PCB and RF Connector

Port Reference	Approximate Loss (dB)
RF IN	0.2
RF OUT	0.2
IF IN	0.1
IF OUT	0.1
LO IN	0.25

The DC connector on the Designer's Kit PCB allows selection of all the device's operating modes. It is accomplished by one or more of the following methods:

1. A mating female multi-pin connector (Newark Electronics Stock # 46F-4658, not included)
2. Wires soldered to the necessary pins (not included)
3. Clip leads (not included)
4. A combination of clip leads or wires and jumpers (jumpers included as required)

Specifications Subject to Change Without Notice.

M/A-COM, Inc.

16-39

North America: Tel. (800) 366-2266 ■ Asia/Pacific: Tel. +81 (03) 3226-1671 ■ Europe: Tel. +44 (1344) 869 595
 Fax (800) 618-8883 Fax +81 (03) 3226-1451 Fax +44 (1344) 300 020