

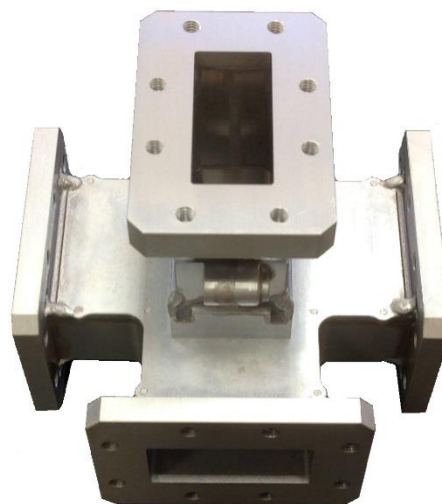
T14001

WG14 (WR137)

Magic Tee



www.mm-microwave.com



MM Microwave is proud to present this WG14 (WR137) magic tee. Shown with a chromate conversion finish, this part can be painted with a standard black matt paint. Please contact our sales team if you need any further details.

Specification

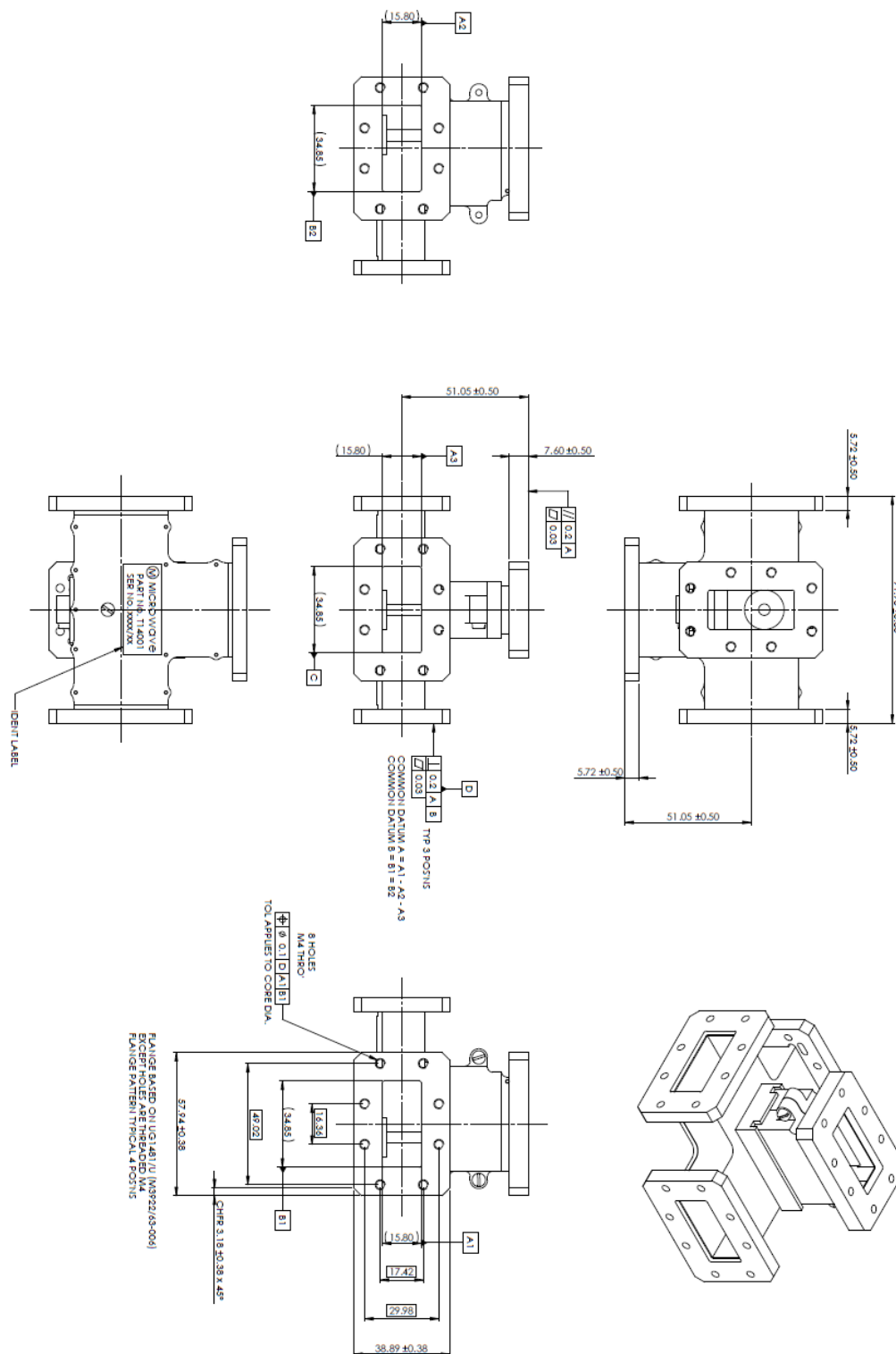
| | | |
|---------------------|--------------|----------------------------|
| Frequency Range | | 5.4 to 5.9GHz |
| VSWR | H Port | 1.15:1 max |
| | E Port | 1.1:1 max |
| Amplitude Unbalance | | ±0.1dB max |
| Isolation | H to E Ports | 40dB min |
| Flange Type | | UG1481/U with 8 x M4 holes |

MM Microwave Limited

Thornton Road Industrial Estate, Pickering, North Yorkshire, YO18 7JB, UK

Tel +44(0)1751 472866 Fax +44 (0)1751475379 Email info@mm-microwave.com

www.mm-microwave.com



MM Microwave Limited

Thornton Road Industrial Estate, Pickering, North Yorkshire, YO18 7JB, UK

Tel +44(0)1751 472866 Fax +44 (0)1751475379 Email info@mm-microwave.com

www.mm-microwave.com