

MECHANICAL
CONTACT: BREAK BEFORE MAKE
ACTUATOR: FAILSAFE
SWITCHING SPEED: 20 mSEC MAX

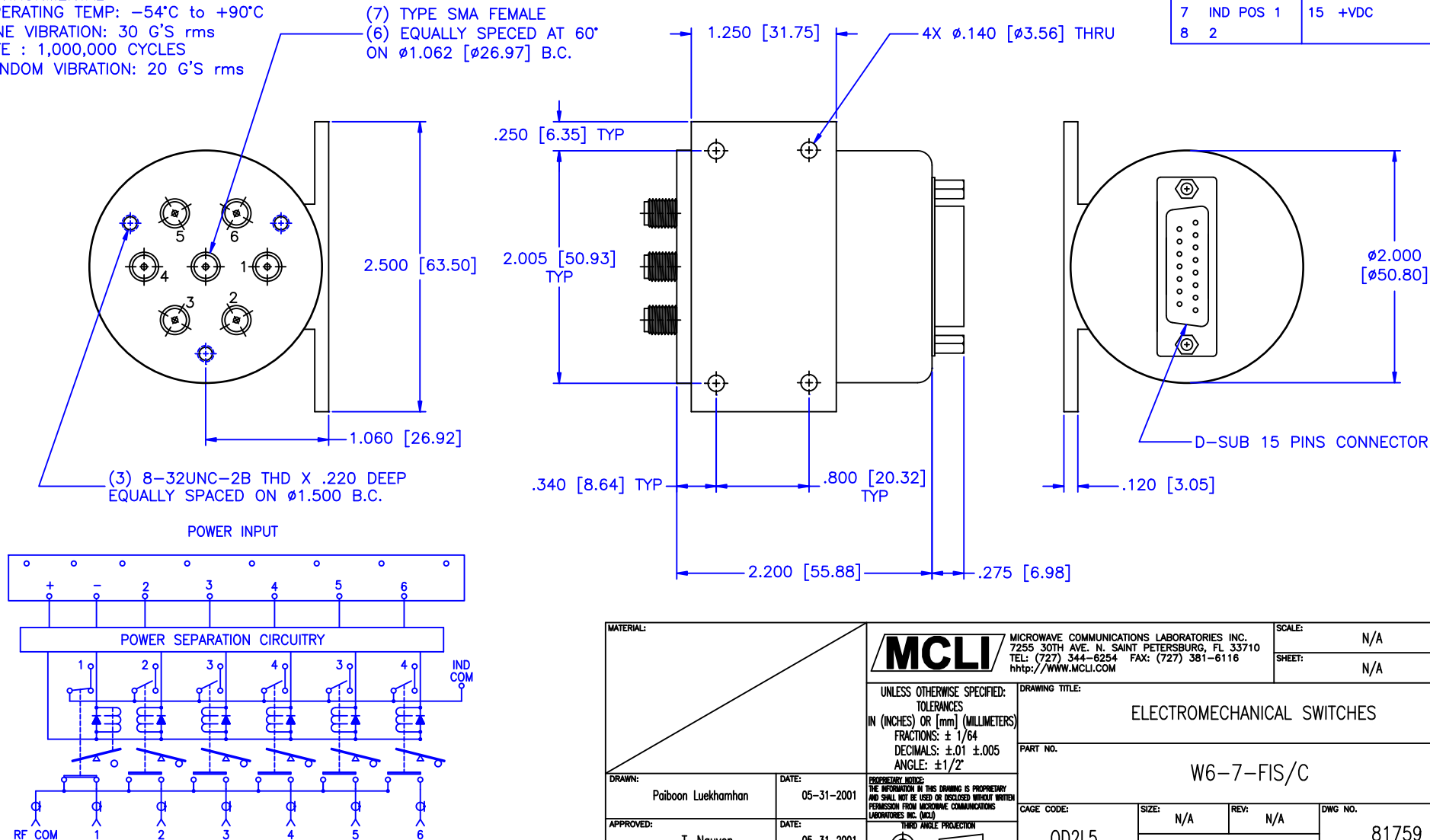
ELECTRICAL
ACTUATOR VOLTAGE: 28.0 Vdc (22.0–32.0 Vdc)
ACTUATOR CURRENT: 0.600 A MAX @ 28.0 Vdc
POWER HANDLING: 200 WCW @ 1.0 GHz
IMPEDANCE: 50 OHMS

ENVIRONMENTAL
OPERATING TEMP: –54°C to +90°C
SINE VIBRATION: 30 G'S rms
LIFE : 1,000,000 CYCLES
RANDOM VIBRATION: 20 G'S rms

SPECIFICATION:

FREQUENCY RANGE (GHz):	DC–2.0	2.0–4.0	4.0–8.0	8.0–12.4	12.4–18.0
VSWR (Max.):	1.20:1	1.25:1	1.30:1	1.40:1	1.50:1
INSERTION LOSS (dB):	0.20	0.25	0.30	0.40	0.50
ISOLATION (dB):	90	80	80	70	60

D-SUB 15 PINS CONNECTOR			
PIN	APPLICATIONS	PIN	APPLICATIONS
1	ON POS 1	9	3
2	POS 2	10	4
3	3	11	5
4	4	12	6
5	5	13	C IND
6	6	14	C PWR
7	IND POS 1	15	+VDC
8	2		



MATERIAL:		MCLI MICROWAVE COMMUNICATIONS LABORATORIES INC. 7255 30TH AVE. N. SAINT PETERSBURG, FL 33710 TEL: (727) 344–6254 FAX: (727) 381–6116 http://WWW.MCLI.COM		SCALE: N/A
		UNLESS OTHERWISE SPECIFIED: TOLERANCES IN (INCHES) OR (mm) (MILLIMETERS) FRACTIONS: ± 1/64 DECIMALS: ±.01 ±.005 ANGLE: ±1/2°		SHEET: N/A
DRAWN: Paiboon Luekhamhan		DRAWING TITLE: ELECTROMECHANICAL SWITCHES		
DATE: 05–31–2001		PART NO. W6–7–FIS/C		
APPROVED: T. Nguyen		DATE: 05–31–2001		
THIRD ANGLE PROJECTION		CAGE CODE: OD2L5		
		SIZE: N/A		REV: N/A
		DO NOT SCALE THE DRAWING		DWG NO. 81759