
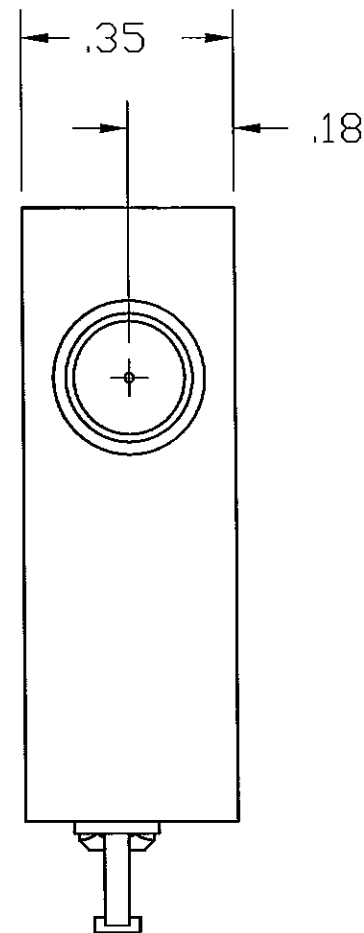
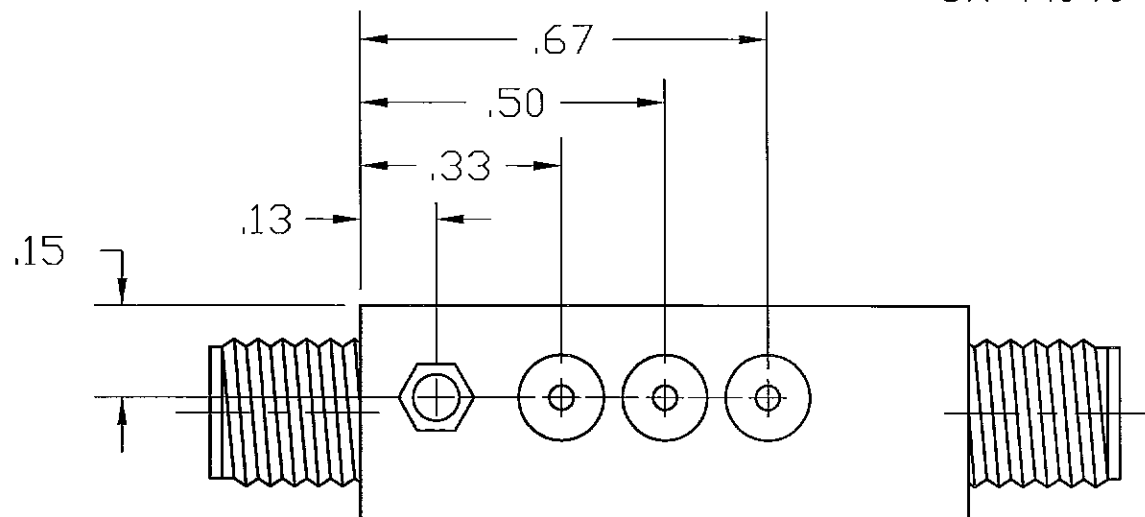



REVISIONS			
REV.	DESCRIPTION	DATE	RELEASED BY
NC	INITIAL RELEASE	5-3-95	D REGEV
A	REV PER ECN: 4808	5-24-95	D REGEV
B	REV PER ECN: 6822, 9830	6-9-05	R.Ts.
C	REV PER ECN: 11436	11-12-07	



FREQUENCY:	0.5 TO 26.5 GHz	
VSWR:	0.5 - 20.0 GHz:	2.0:1 MAX
J1 - ON ONLY	20.0 - 26.0 GHz	2.3:1 MAX
J2 - ON OR OFF		
INSERTION LOSS:	0.5 - 4.0 GHz:	1.5 dB MAX
	4.0 - 8.0 GHz:	1.8 dB MAX
	8.0 - 12.0 GHz	2.0 dB MAX
	12.0 - 18.0 GHz:	2.5 dB MAX
	18.0 - 20.0 GHz	3.0 dB MAX
	20.0 - 26.5 GHz	3.9 dB MAX
ISOLATION:	0.5 - 12.0 GHz	65 dB MIN
	12.0 - 20.0 GHz	60 dB MIN
	20.0 - 26.5 GHz	55 dB MIN
SWITCHING SPEED:		25 nSEC
(50% TTL to 10/90% RF)		
TEMPERATURE:		
OPERATING:	-55° TO +100°C	
STORAGE	-65° TO +125°C	
POWER SUPPLY:	+5V @ 50 mA MAX	
	-15V @ 75 mA MAX	
CONTROL AT C1:	TTL LOW - INSERTION LOSS	
	TTL HIGH - ISOLATION	

ITEM	QTY REQ'D	FSCM NO.	PART OR IDENTIFICATION NO.	NOMENCLATURE OR DESCRIPTION		MATERIAL SPECIFICATION						
PARTS LIST												
<div>UNLESS OTHERWISE SPECIFIED DIMENSIONS ARE IN INCHES TOLERANCES ARE: FRACTIONS DECIMALS ANGLES ± .XX±.02 ± .XXX±.010</div>				CONTRACT NO.		<div> SIERRA MICROWAVE TECHNOLOGY</div> <div>TITLE: OUTLINE FOR SFS0526-101</div>						
				APPROVALS					DATE			
MATERIAL:				DRAWN:					D STALEY		5-3-95	
				CHECKED:								
FINISH:				DESIGN ENG.					D REGEV		5-3-95	
				MAT. & PROCESSES								
				Q.A.								
				SIZE		FSCM NO.		DWG NO.		REV		
				B		1CY63		605-0235-001		C		
DO NOT SCALE DRAWING								BRDR SCALE				
								SHEET		OF		