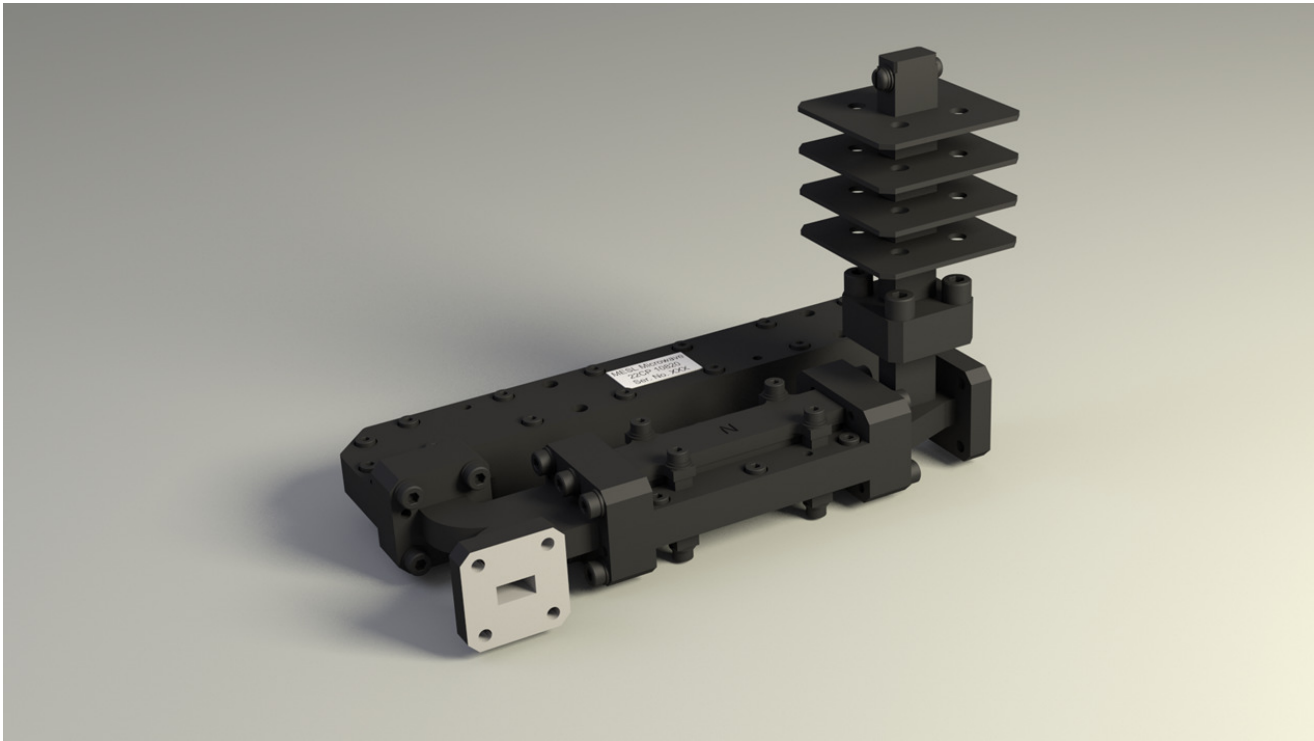


# Ka-Band Differential Phase-shift Isolator



Specification	
Operating Frequency	Ka-Band
Bandwidth	10%
Average Power (W)	200 max
Peak Power (kW)	5 max
Return Loss (dB)	23 min
Isolation (dB)	23 min
Insertion Loss (dB)	0.4 max
Waveguide Size	WG22 / WR28
Operating Temp	-40 to +85C

- High peak & average power handling
- Integral loads
- Qualified for military applications
- Compact design
- Wide operating temperature