

ADAPTERS, BETWEEN SERIES TYPE N / BNC

DC - 8 GHz



MODELS: 5021, 5022, 5023, 5024

SPECIFICATIONS:

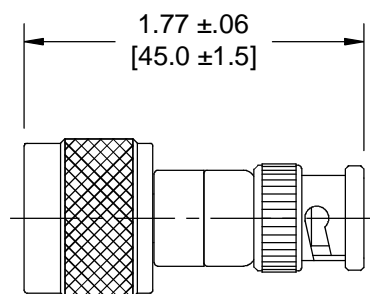
Electrical:

Frequency Range _____ DC — 8 GHz
VSWR _____ 1.30:1 Max.
Impedance _____ 50 Ohms
Operating Temp. Range _____ -65°C to +125°C

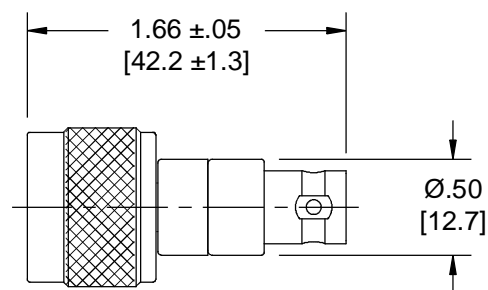
Mechanical:

Type N Connectors _____ Passivated Stainless Steel
Mates with MIL-STD-348
BNC Connectors _____ Nickel Plated Brass
Mates with MIL-STD-348
Conductors _____ Gold Plated Beryllium Copper

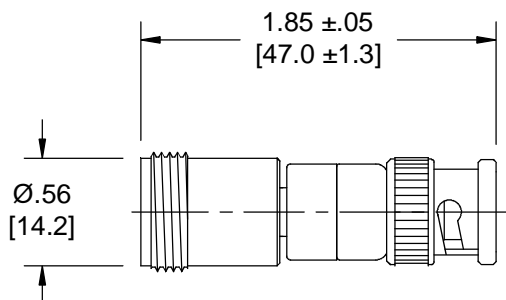
Model Number: **5021**
Type N Male / BNC Male



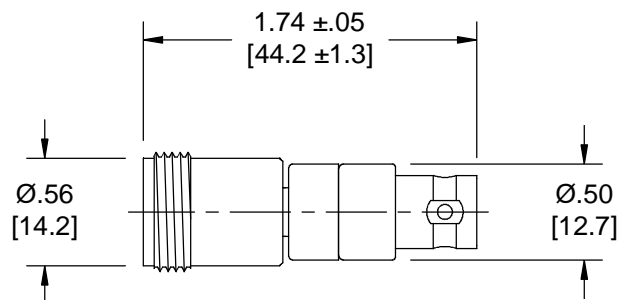
Model Number: **5022**
Type N Male / BNC Female



Model Number: **5023**
Type N Female / BNC Male



Model Number: **5024**
Type N Female / BNC Female



Note: Dimensions in Brackets are Expressed in Millimeters and are for Reference Only.

Design specifications are subject to change without notice.

Contact factory for technical specifications before purchasing or use.

5021; REV A

300 Dino Drive • Ann Arbor, MI 48103-9457 U.S.A. • 888-244-6638 or 734-426-5553 • FAX 734-426-5557 • inmet.apitech.com