

NOTES:

1. MATERIALS AND FINISHES:

BODY - BRASS - TIN PLATED
CONTACT - BERYLLIUM COPPER - TIN PLATED
INSULATOR - PTFE
SPRING SLEEVE - BERYLLIUM COPPER - TIN PLATED
NUT - BRASS - TIN PLATED

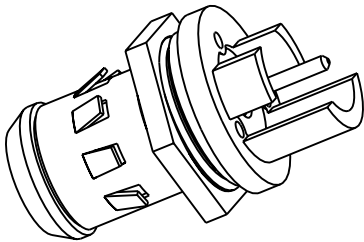
2. DESIGNED FOR PANEL THICKNESS OF .020 MIN. TO .078 MAX.

3. NUT TO BE SUPPLIED LOOSE

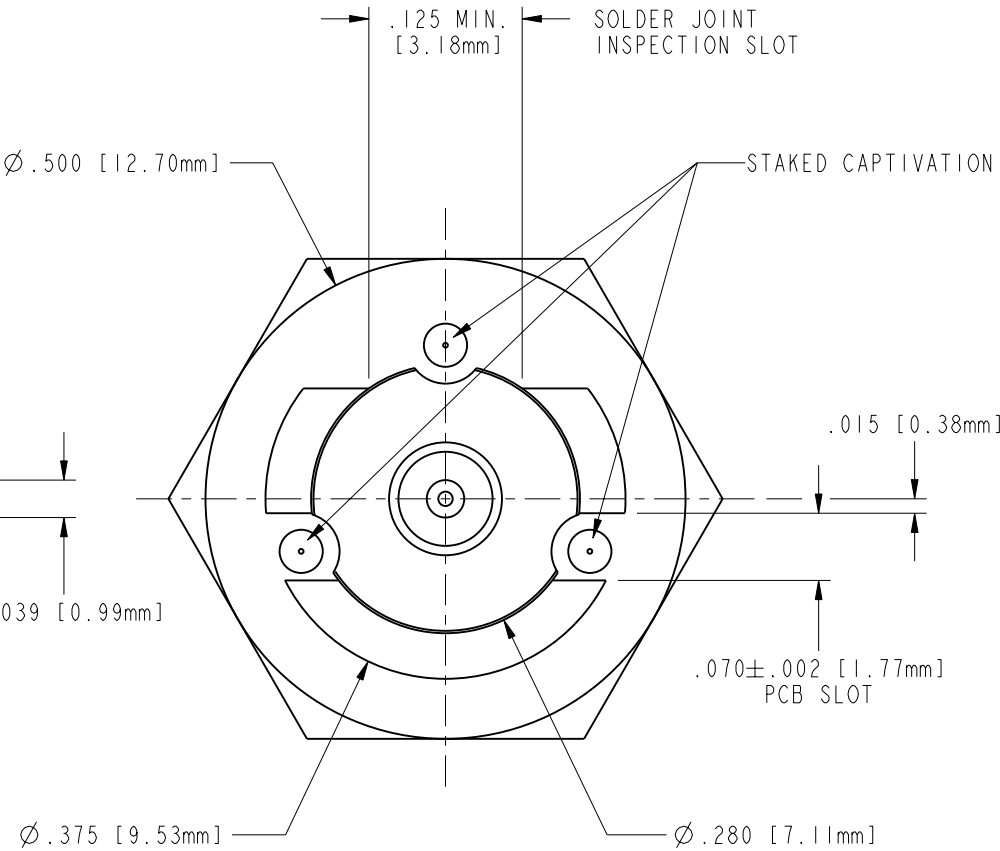
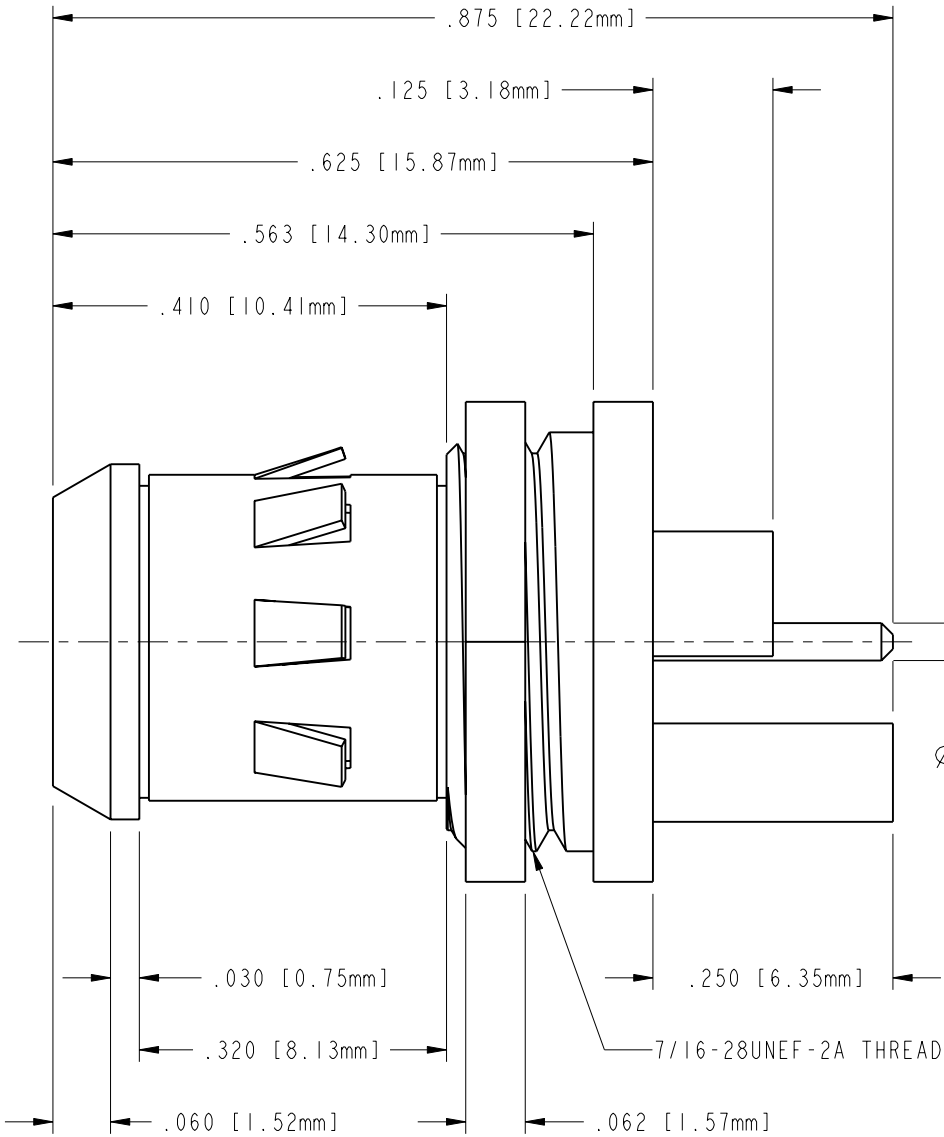
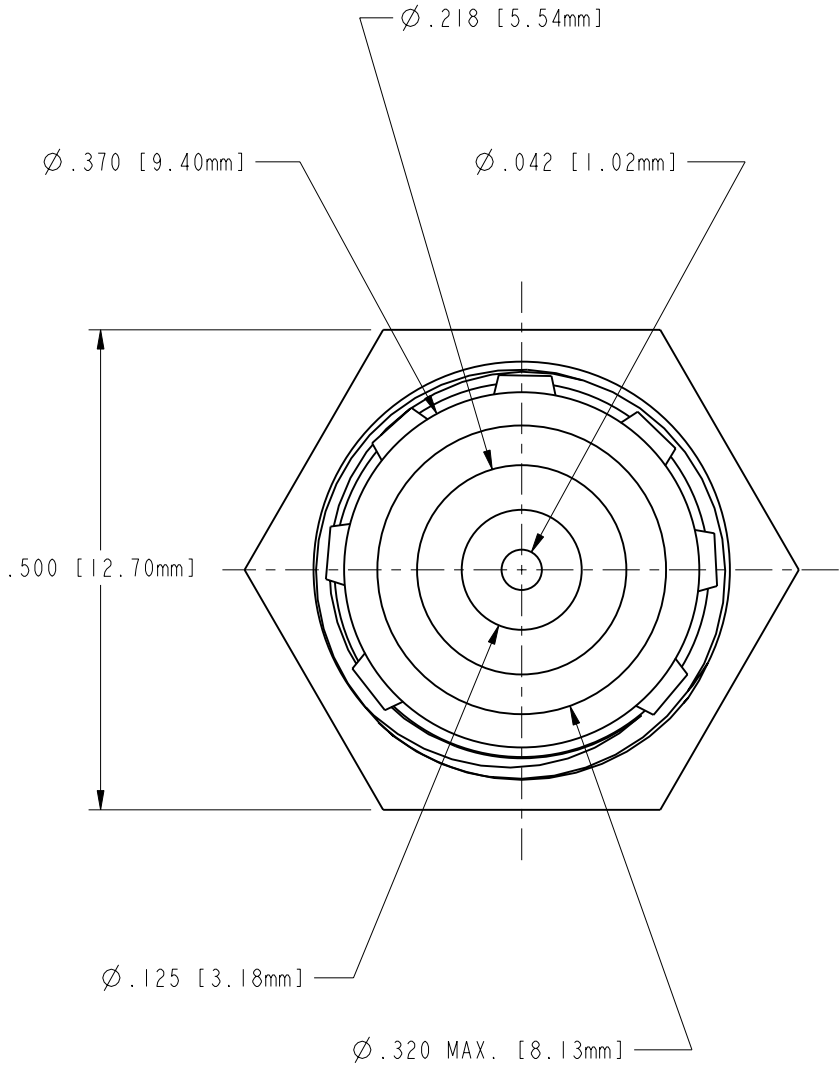
531-40106

REVISIONS

DRAWING NO.	REV	DESCRIPTION	DATE	ECO	APPR
THIRD ANGLE PROJ.	A	RELEASE TO MFG.	4/25/02	44032	BCG



SCALE 2.000



CUSTOMER OUTLINE DRAWING
ALL OTHER SHEETS ARE FOR INTERNAL USE ONLY

UNLESS OTHERWISE SPECIFIED, DIMENSIONS ARE IN INCHES AND TOLERANCES ARE: 2 PLACE DECIMAL 3 PLACE DECIMAL ANGLES ±.015 (0,381 mm) ±.005 (0,127 mm) ± 1°	MATERIAL	DRAWN	DATE	TITLE		Amphenol Amphenol Corporation Communication and Network Products Division Danbury, CT U.S.A. 06810		
		B.C. GLEISSNER	24-Apr-02					
	ENGINEER	DATE	TYPE G RECEPTACLE, PCB EDGE MOUNT					
	B.C. GLEISSNER	24-Apr-02						
NOTICE - These drawings, specifications, or other data (1) are, and remain the property of Amphenol Corp. (2) must be returned upon request; and (3) are confidential and not to be disclosed to any person other than those to whom they are given by Amphenol Corp. The furnishing of these drawings, specifications, or other data by Amphenol Corp., or to any other person to anyone for any purpose is not to be regarded by implication or otherwise in any manner licensing, granting rights or permitting such holder or any other person to manufacture, use or sell any product, process or design, patented or otherwise, that may in any way be related to or disclosed by said drawings, specifications, or other data.	REFERENCE	APPROVED	DATE			SCALE: 5.0:1	SHEET	2 OF 2
	616X-1027-100	O. BARTHELMES	25-Apr-02					
	EAR# 593 GEN# 616X-1027-X00	CAD FILE		CODE ID	DWG SIZE	DRAWING NO.		REV
		I:\CATV\F&G\531-40106		74868	B	531-40106		A