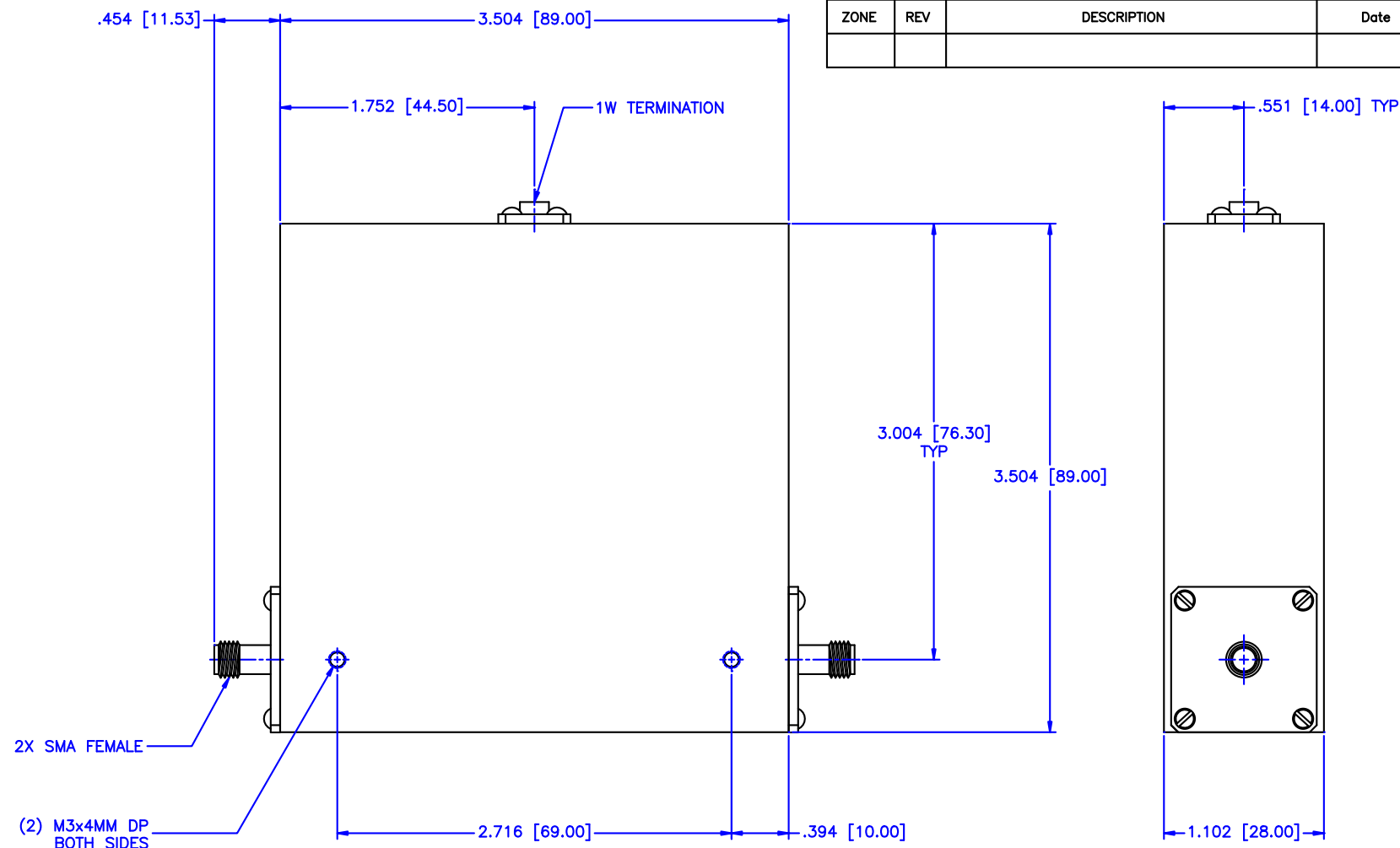


REVISIONS				
ZONE	REV	DESCRIPTION	Date	APPROVED



**SPECIFICATIONS**

Frequency Range: 0.85–2.20 GHz  
Isolation: 12dB Min.  
Insertion loss: 1.0dB Max.  
VSWR: 1.70:1 Max.  
Power Avg, Peak: 1W, 100W  
Operating Temperature: +10°C to +40°C

MATERIAL:		<b>MCLI</b> MICROWAVE COMMUNICATIONS LABORATORIES INC. 7255 30TH AVE. N. SAINT PETERSBURG, FL 33710 TEL: (727) 344-6254 FAX: (727) 381-6116 http://WWW.MCLI.COM		SCALE: N/A	
		UNLESS OTHERWISE SPECIFIED: TOLERANCES IN (INCHES) OR [mm] (MILLIMETERS) FRACTIONS: $\pm 1/64$ DECIMALS: $\pm 0.01 \pm 0.005$ ANGLE: $\pm 1/2^\circ$		DRAWING TITLE: CIRCULATOR, ISOLATOR	
DRAWN: Paiboon Luekhamhan		DATE: 02-24-2006		PART NO. IS-35	
APPROVED: T. Nguyen		DATE: 02-24-2006		CAGE CODE: 0D2L5	
THIRD ANGLE PROJECTION		SIZE: N/A		REV: N/A	
		DO NOT SCALE THE DRAWING		DWG. NO. 82504	