

Low Pass Filter

50Ω DC to 1100 MHz (40 dB Isolation up to 20 GHz)

Maximum Ratings

Operating Temperature	-55°C to 100°C
Storage Temperature	-55°C to 100°C
RF Power Input*	10W max. at 25°C

*Passband rating, derate linearly to 3.5W at 100°C ambient.
Permanent damage may occur if any of these limits are exceeded.

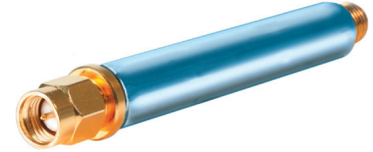
Features

- very good isolation, 40 dB up to 20 GHz
- 21 sections
- excellent power handling, 10W
- temperature stable LTCC internal structure
- re-entry frequency > 20 GHz
- rugged unibody construction
- protected by US patent 6,943,646

Applications

- harmonic rejection
- transmitters/receivers
- lab use
- test instrumentation

VLFX-1100



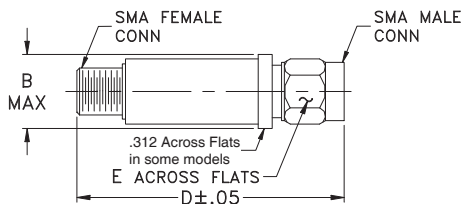
CASE STYLE: FF1118

Connectors	Model	Price	Qty.
SMA	VLFX-1100	\$39.95 ea.	(1-9)

+RoHS Compliant

The +Suffix identifies RoHS Compliance. See our web site for RoHS Compliance methodologies and qualifications

Outline Drawing



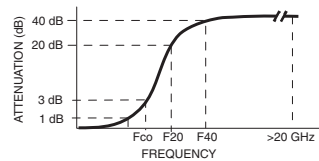
Outline Dimensions (inch mm)

B	D	E	wt.
.410	2.67	.312	grams
10.41	67.82	7.92	17.0

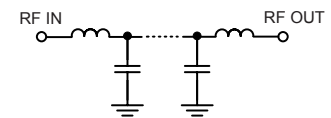
Low Pass Filter Electrical Specifications @ 25°C

MODEL NO.	PASSBAND (MHz) (Loss < 1.2dB Max.)	Fco, MHz Nom (Loss 3 dB Typ)	STOPBAND (MHz) (Loss, dB)		VSWR (:1)		NO. OF SECTIONS
			F20 Min.	F40 Typ.	Stopband Typ.	Passband Typ.	
VLFX-1100	DC-1100	1750	2070	2300-20000	10	1.4	21

Typical Frequency Response

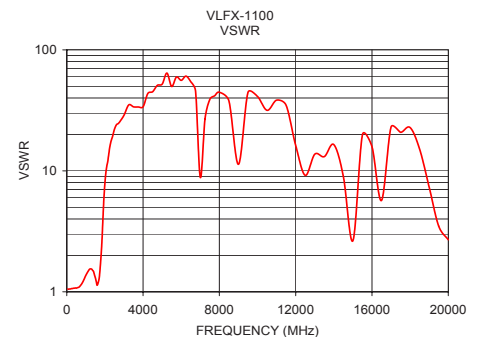
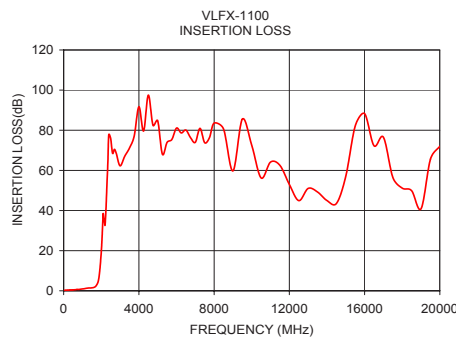


Functional Schematic



Typical Performance Data @ 25°C

Frequency (MHz)	Insertion Loss (dB)	VSWR (:1)
50	0.31	1.06
350	0.40	1.07
700	0.69	1.12
1100	1.03	1.46
1200	1.24	1.54
1400	1.42	1.47
1600	1.68	1.13
1750	2.92	1.66
1900	8.30	4.14
2070	31.74	10.16
2300	52.14	17.07
3000	62.27	28.86
4000	91.73	33.84
5000	84.76	52.10
7500	73.80	39.07
10000	72.42	41.17
12500	44.93	9.18
15000	57.16	2.65
17500	56.53	20.82
20000	72.04	2.69



Mini-Circuits®
ISO 9001 ISO 14001 AS 9100 CERTIFIED

P.O. Box 350166, Brooklyn, New York 11235-0003 (718) 934-4500 Fax (718) 332-4661 The Design Engineers Search Engine

IF/RF MICROWAVE COMPONENTS

For detailed performance specs & shopping online see web site

Provides ACTUAL Data Instantly at minicircuits.com

Notes: 1. Performance and quality attributes and conditions not expressly stated in this specification sheet are intended to be excluded and do not form a part of this specification sheet. 2. Electrical specifications and performance data contained herein are based on Mini-Circuit's applicable established test performance criteria and measurement instructions. 3. The parts covered by this specification sheet are subject to Mini-Circuits standard limited warranty and terms and conditions (collectively, "Standard Terms"); Purchasers of this part are entitled to the rights and benefits contained therein. For a full statement of the Standard Terms and the exclusive rights and remedies thereunder, please visit Mini-Circuits' website at www.minicircuits.com/MCLStore/terms.jsp.

REV. B
M131810
VLFX-1100
EDU-0399
ED-11930A/16
URJ/RS/CP
130319
Page 1 of 1