

TERMINATIONS

BNC (75 Ω)

DC - 1 GHz
1 WATT

api
technologies corp.
> INMET

MODELS: 3038/75 & 3038/75C

SPECIFICATIONS:

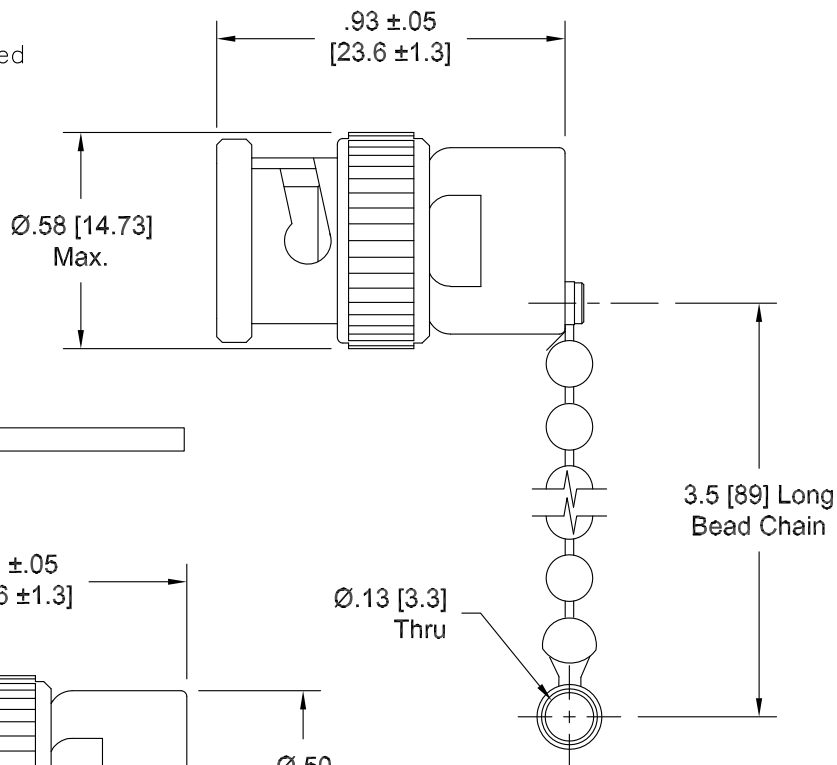
Electrical:

Frequency Range _____ DC - 1 GHz
VSWR _____ 1.10:1 Max.
Input Power _____ 1 Watt Avg. @ +25°C
Derated Linearly to 0.25 Watts @ +100°C
Impedance _____ 75 Ohms
Operating Temp. Range _____ -20°C to +100°C

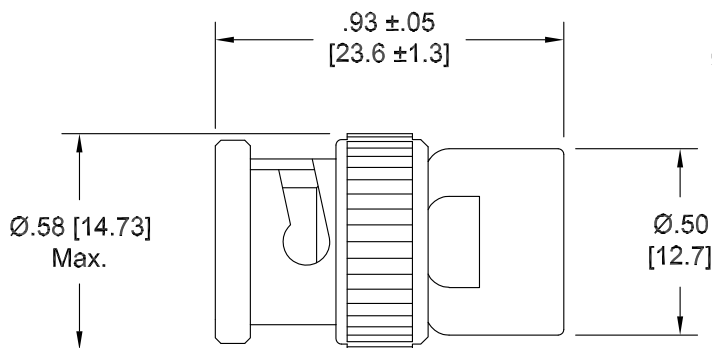
Mechanical:

BNC Connectors _____ Nickel Plated Brass
Conductors _____ Gold Plated Beryllium Copper
Bead Chains _____ Passivated Stainless Steel

Model Number: **3038/75C**
BNC Male Connector Chain Included



Model Number: **3038/75**
BNC Male Connector



Note: Dimensions in Brackets are Expressed in Millimeters and are for Reference Only.
Design specifications are subject to change without notice.
Contact factory for technical specifications before purchasing or use.