



Directional 30 dB N Coupler From 1 GHz
to 4 GHz Rated To 600 Watts

TECHNICAL DATA SHEET

PE2228-30

Configuration

Connector 1	N Female
Connector 2	SMA Female
Coupled Connectors	SMA Female
Design	Directional Coupler

Electrical Specifications (Values at 25°C, sea level)

Description	Minimum	Typical	Maximum	Units
Frequency Range	1		4	GHz
Directivity	15			dB
Impedance		50		Ohms
Insertion Loss			0.2	dB
Input Power			600	Watts
Input VSWR			1.15:1	
Peak Power			10	KWatts
Coupling Value		30		dB
Coupling Tolerance			± 1	dB
Frequency Sensitivity		0.7		dB

Mechanical Specifications

Size	
Length	5.35 in [135.89 mm]
Width/Dia.	0.8 in [20.32 mm]
Height	1.6 in [40.64 mm]

Connectors

Description	Connector 1	Connector 2	Coupled Connectors
Type	N Female	SMA Female	SMA Female

Compliance Certifications (visit www.Pasternack.com for current document)

Not RoHS Compliant	
REACH Compliant	12/19/2011

Click the following link (or enter part number in "SEARCH" on website) to obtain additional part information including price, inventory and certifications: [Directional 30 dB N Coupler From 1 GHz to 4 GHz Rated To 600 Watts PE2228-30](#)



Directional 30 dB N Coupler From 1 GHz to 4 GHz Rated To 600 Watts

TECHNICAL DATA SHEET

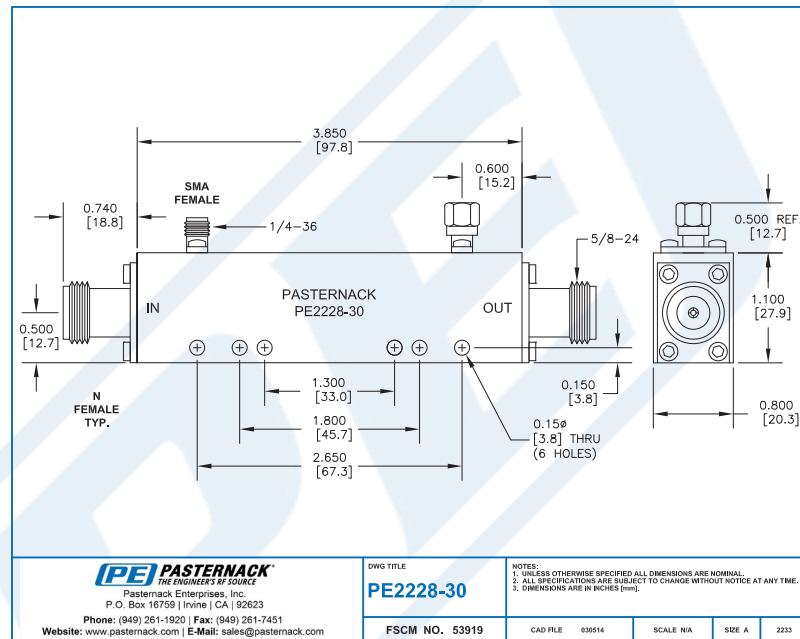
PE2228-30

Plotted and Other Data

Notes:

- Values at 25 °C, sea level

Outline Drawing



Directional 30 dB N Coupler From 1 GHz to 4 GHz Rated To 600 Watts from Pasternack Enterprises has same day shipment for domestic and International orders. Our RF, microwave and millimeter wave products maintain a 99% availability and are part of the broadest selection in the industry.

Click the following link (or enter part number in "SEARCH" on website) to obtain additional part information including price, inventory and certifications: [Directional 30 dB N Coupler From 1 GHz to 4 GHz Rated To 600 Watts PE2228-30](http://www.pasternack.com/directional-30-db-n-coupler-1-4-ghz-600-watts-pe2228-30-p.aspx)

URL: <http://www.pasternack.com/directional-30-db-n-coupler-1-4-ghz-600-watts-pe2228-30-p.aspx>

The information contained in this document is accurate to the best of our knowledge and representative of the part described herein. It may be necessary to make modifications to the part and/or the documentation of the part, in order to implement improvements. Pasternack reserves the right to make such changes as required. Unless otherwise stated, all specifications are nominal. Pasternack does not make any representation or warranty regarding the suitability of the part described herein for any particular purpose, and Pasternack does not assume any liability arising out of the use of any part or documentation.