

CIRCULAR POLARISED OMNI ANTENNA OA3-1.9L-2.7L/1558



ELECTRICAL

FREQUENCY:	1.9-2.7 GHz
GAIN:	2.0 dBiC Typ.
POLARISATION:	Left Hand Circular
BEAMWIDTH:	360° (Az) x 100° (El) Approx.
VSWR:	2:1 Max.
POWER RATING:	20 W

MECHANICAL

STANDARD FINISH:	Gloss White
MASS:	0.5 kg / 1.1 lbs
TEMPERATURE:	-40° to +70°C
WIND LOADING:	2.0 kg / 4.4 lbs @ 100 mph

MOUNTING OPTIONS

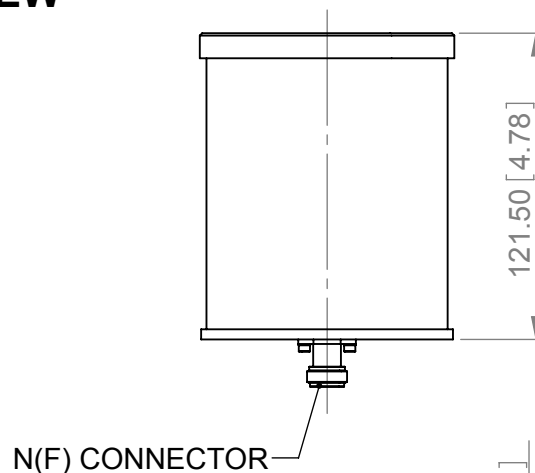
KITS AVAILABLE: N/A

See Separate Data Sheets

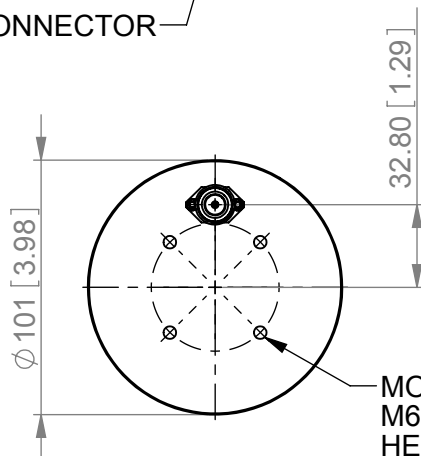
GA: 1558-1 Issued: 160708

DIMENSIONS: mm [inches]

**SIDE
VIEW**



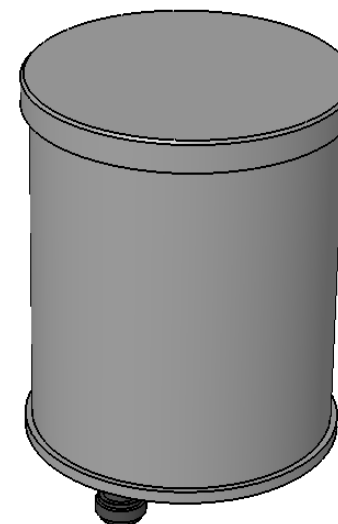
N(F) CONNECTOR



MOUNTING VIA 4,
M6.0 x 9 DEEP
HELICOIL INSERTS,
EQUI SP. ON 50.7 (2") PCD.

**BASE
VIEW**

**PICTORIAL
VIEW**



OA3-1.9-2.7L/1558

European Antennas Ltd. has a policy of continuous development and therefore stress that the data contained on this sheet should be used for guidance only.

European Antennas Ltd. is part of the Cobham Antennas Division

COBHAM Antennas



Certificate No 9268

European Antennas Ltd
Lambda House, Cheveley
Newmarket, Suffolk, CB8 9RG, UK
Tel: +44 (0)1638 731888
sales@european-antennas.co.uk
www.european-antennas.co.uk