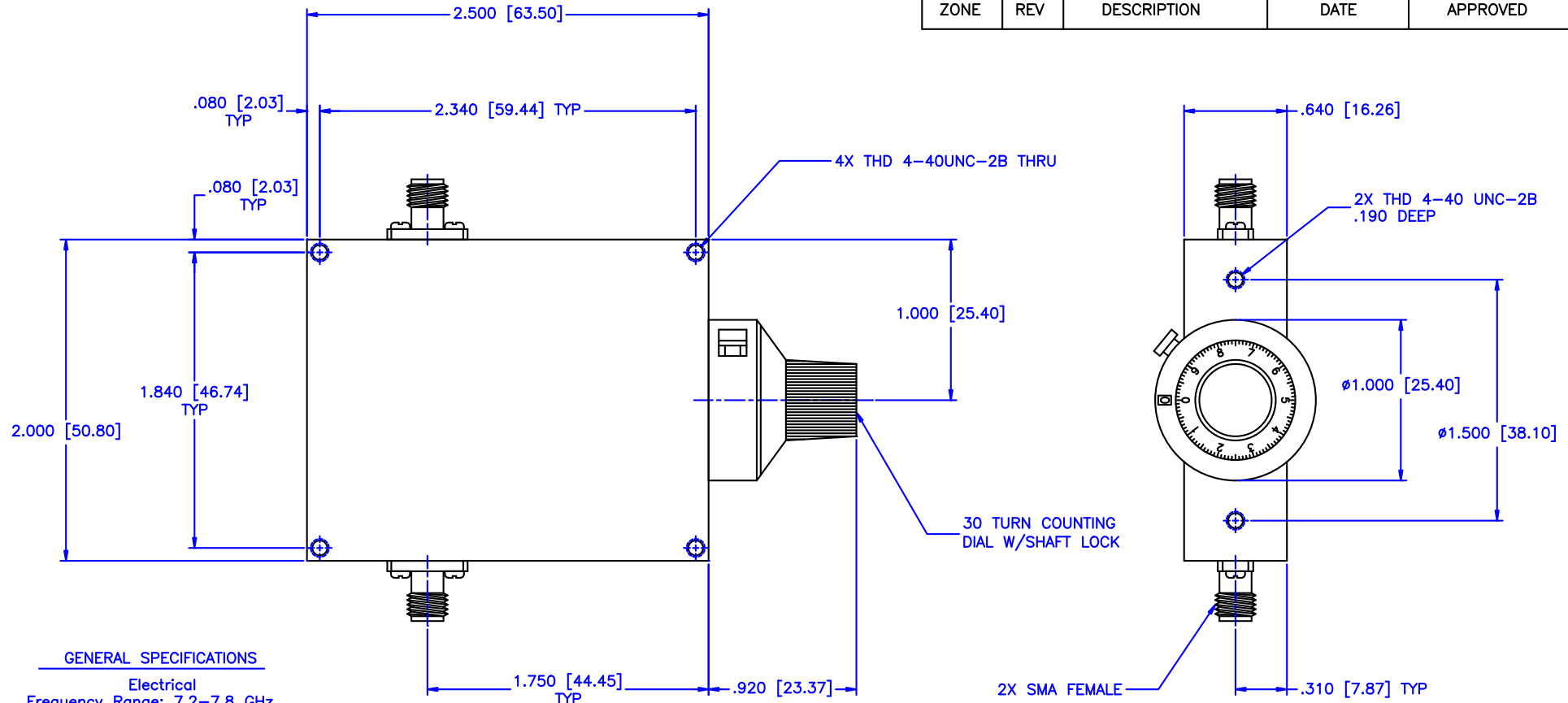


REVISIONS				
ZONE	REV	DESCRIPTION	DATE	APPROVED




GENERAL SPECIFICATIONS

Electrical
Frequency Range: 7.2–7.8 GHz
Attenuation: 30dB
Flatness: ± 0.40 dB
VSWR: 1.50:1 Max.
Insertion Loss per Frequency Band
to 18 GHz: 0.5dB max.
to 26 GHz: 0.75dB max.
to 40 GHz: 1.50dB max.
RF Power: 7W average, 3kW peak

Mechanical
Body: Aluminum
Connectors: Stainless Steel
Finish: Unique corrosion resistant 316 stainless steel epoxy coating IAW MIL-F-14072
Weight: 5.2oz / 150gm

Environmental
Operating Temperature: -55°C to $+110^{\circ}\text{C}$
Shock: 15 G's, 11ms, 1/2 sine
Vibration: 3 G's overall
Altitude: 40,000ft. Survival 25,000ft Operating

<div>MATERIAL:</div>		<div>MCLI</div>		<div>MICROWAVE COMMUNICATIONS LABORATORIES INC. 7255 30TH AVE. N. SAINT PETERSBURG, FL 33710 TEL: (727) 344-6254 FAX: (727) 381-6116 http://WWW.MCLI.COM</div>		SCALE:		N/A					
						SHEET:		N/A					
				<div>UNLESS OTHERWISE SPECIFIED: TOLERANCES IN (INCHES) OR [mm] (MILLIMETERS) FRACTIONS: ± 1/64 DECIMALS: ±0.01 ±0.005 ANGLE: ±1/2°</div>		<div>DRAWING TITLE:</div> <div>CONTINUOUSLY VARIABLE ATTENUATOR WITH DIAL</div>		<div>PART NO.</div> <div>CA5-30/D</div>					
<div>DRAWN:</div> <div>Paiboon Luekhamhan</div>		<div>DATE:</div> <div>02-09-2011</div>		<div>PROPRIETARY NOTICE: THE INFORMATION IN THIS DRAWING IS PROPRIETARY AND SHALL NOT BE REPRODUCED OR DISCLOSED WITHOUT WRITTEN PERMISSION FROM MICROWAVE COMMUNICATIONS LABORATORIES INC. (MCLI)</div> <div>THIRD ANGLE PROJECTION</div> <div></div>		<div>CAGE CODE:</div> <div>0D2L5</div>		<div>SIZE:</div> <div>A</div>		<div>REV:</div> <div>N/A</div>		<div>DWG NO.</div> <div>85457</div>	
<div>APPROVED:</div> <div>T. Nguyen</div>		<div>DATE:</div> <div>02-09-2011</div>						<div>DO NOT SCALE THE DRAWING</div>					