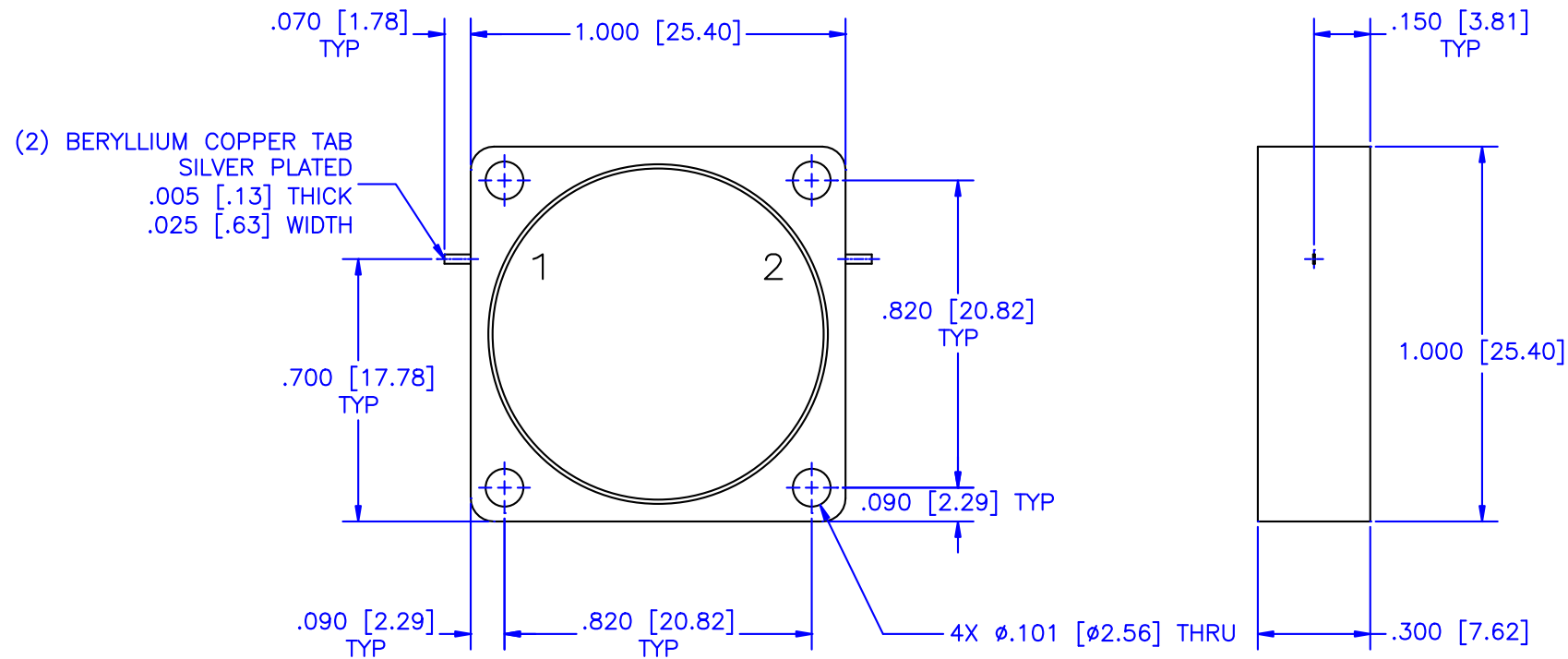


REVISIONS				
ZONE	REV	DESCRIPTION	DATE	APPROVED



SPECIFICATIONS

Frequency Range: 1.10–1.40 GHz
 Isolation: 18dB Min.
 Insertion loss: 0.6dB Max.
 VSWR: 1.33:1 Max.
 Operating Temperature: –30°C to +70°C
 Average Power: 1 Watt

MATERIAL:			MICROWAVE COMMUNICATIONS LABORATORIES INC. 7255 30TH AVE. N. SAINT PETERSBURG, FL 33710 TEL: (727) 344-6254 FAX: (727) 381-6116 http://WWW.MCLI.COM		SCALE:	N/A
					SHEET:	N/A
UNLESS OTHERWISE SPECIFIED: TOLERANCES IN (INCHES) OR [mm] (MILLIMETERS) FRACTIONS: $\pm 1/64$ DECIMALS: $\pm 0.01 \pm 0.005$ ANGLE: $\pm 1/2^\circ$		DRAWING TITLE: DROP-IN ISOLATOR				
		PART NO. DI-105				
DRAWN: Paiboon Luekhamhan	DATE: 03-12-2012	PROPRIETARY NOTICE: THE INFORMATION IN THIS DRAWING IS PROPRIETARY AND SHALL NOT BE USED OR DISCLOSED WITHOUT WRITTEN PERMISSION FROM MICROWAVE COMMUNICATIONS LABORATORIES INC. (MCLI)	CAGE CODE:	SIZE:	REV:	DWG NO.
APPROVED: T. Nguyen	DATE: 03-12-2012		OD2L5	N/A	N/A	86016
		THIRD ANGLE PROJECTION	DO NOT SCALE THE DRAWING			