

SECTOR ANTENNA SA16-90-3.5DS/9325

PROVISIONAL SPECIFICATION

CONFORMS TO ETSI EN 302 326-3 V1.2.2 CLASS SS 2



ELECTRICAL

FREQUENCY:	3.40 - 3.72 GHz
GAIN:	16.0 dBi Approx. Peak
POLARISATION:	Dual Slant $\pm 45^\circ$
BEAMWIDTH:	90° (Az) x 9° (El) Approx.
CROSS POLAR:	SS2 Target
VSWR:	1.5:1
POWER RATING:	50 W
FRONT TO BACK:	>35 dB
ELEC DOWNTILT:	2°

MECHANICAL

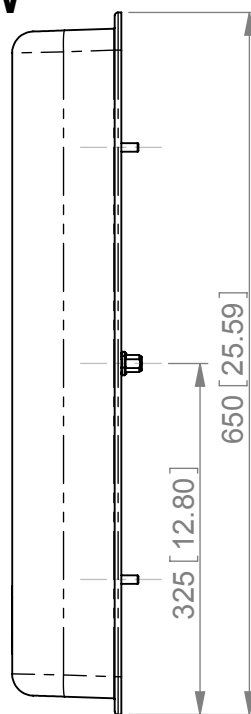
STANDARD FINISH:	Light Grey UV Stable Radome
MASS:	2.0 kg / 4.4 lbs
TEMPERATURE:	-40° to +60°C
WIND LOADING:	21.1 kg / 46.4 lbs @ 100 mph

MOUNTING OPTIONS

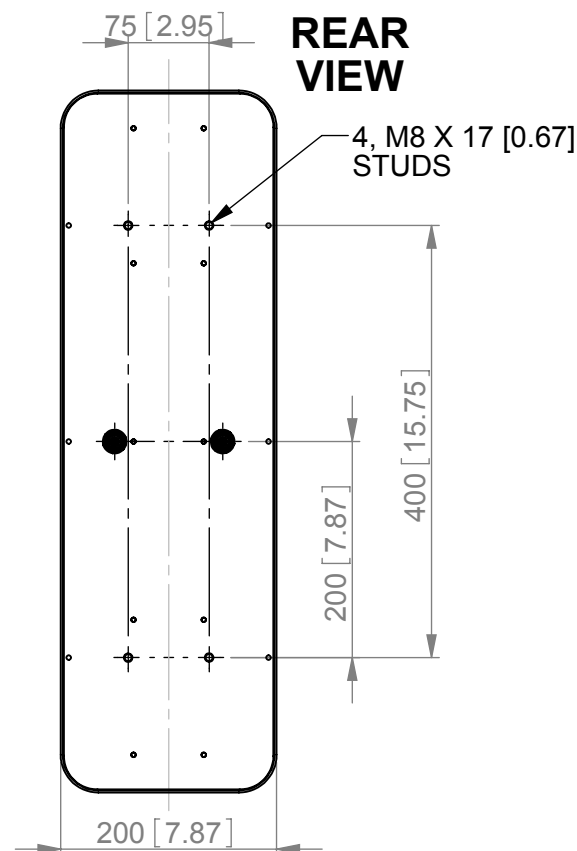
KITS AVAILABLE:	MK1/A
See Separate Data Sheets	

GA: 9325-B Issued: 190308
DIMENSIONS: mm [inches]

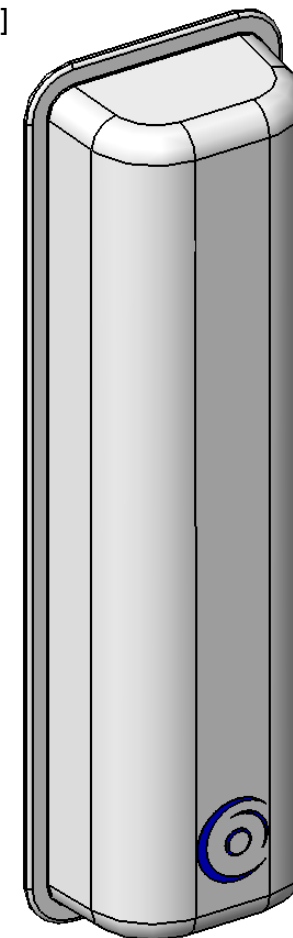
**SIDE
VIEW**



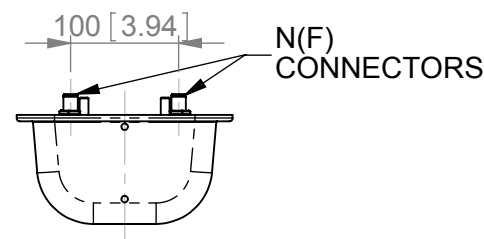
**REAR
VIEW**



**ISOMETRIC
VIEW**



**BASE
VIEW**



SA16-90-3.5DS/9325

European Antennas Ltd. has a policy of continuous development and therefore stress that the data contained on this sheet should be used for guidance only.

European Antennas Ltd. is part of the Cobham Antennas Division



Certificate No 9268

European Antennas Ltd
Lambda House, Cheveley
Newmarket, Suffolk, CB8 9RG, UK
Tel: +44 (0)1638 731888
sales@european-antennas.co.uk
www.european-antennas.co.uk