



## 50 Ohm 2 Way SMA Wilkinson Power Divider From 690 MHz to 2.7 GHz Rated at 10 Watts

### TECHNICAL DATA SHEET

PE2088

#### Configuration

|                                 |                 |
|---------------------------------|-----------------|
| Input Connector                 | SMA Female      |
| Input Connector Specification   | MIL-STD-348     |
| Output Connectors               | SMA Female      |
| Output Connectors Specification | MIL-STD-348     |
| Frequency Range                 | 0.69 to 2.7 GHz |
| Design                          | Wilkinson       |
| Number of Output Ports          | 2               |
| Housing Material and Plating    | Aluminum        |

#### Electrical Specifications (Values at 25°C, sea level)

| Description     | Minimum | Typical | Maximum | Units   |
|-----------------|---------|---------|---------|---------|
| Frequency Range | 0.69    |         | 2.7     | GHz     |
| Impedance       |         | 50      |         | Ohms    |
| Insertion Loss  |         | 0.5     |         | dB      |
| Input Power     |         |         | 10      | Watts   |
| Input VSWR      |         |         | 1.25:1  |         |
| Output VSWR     |         |         | 1.2:1   |         |
| Isolation       | 22      |         |         | dB      |
| Phase Balance   |         | ± 3     |         | Degrees |
| Flatness        |         | 0.2     |         | dB      |

#### Mechanical Specifications

##### Temperature

|                 |                  |
|-----------------|------------------|
| Operating Range | -55 to +85 deg C |
|-----------------|------------------|

##### Size

|        |                  |
|--------|------------------|
| Length | 2.7 in 68.58 mm  |
| Width  | 2 in 50.8 mm     |
| Height | 0.75 in 19.05 mm |

#### Connectors

| Description                    | Input Connector            | Output Connectors          |
|--------------------------------|----------------------------|----------------------------|
| Contact Material and Plating   | Beryllium Copper, Gold     | Beryllium Copper, Gold     |
| Connector Material and Plating | Passivated Stainless Steel | Passivated Stainless Steel |
| Body Material and Plating      | Passivated Stainless Steel | Passivated Stainless Steel |

#### Compliance Certifications (visit [www.Pasternack.com](http://www.Pasternack.com) for current document)

RoHS Compliant



## 50 Ohm 2 Way SMA Wilkinson Power Divider From 690 MHz to 2.7 GHz Rated at 10 Watts

### TECHNICAL DATA SHEET

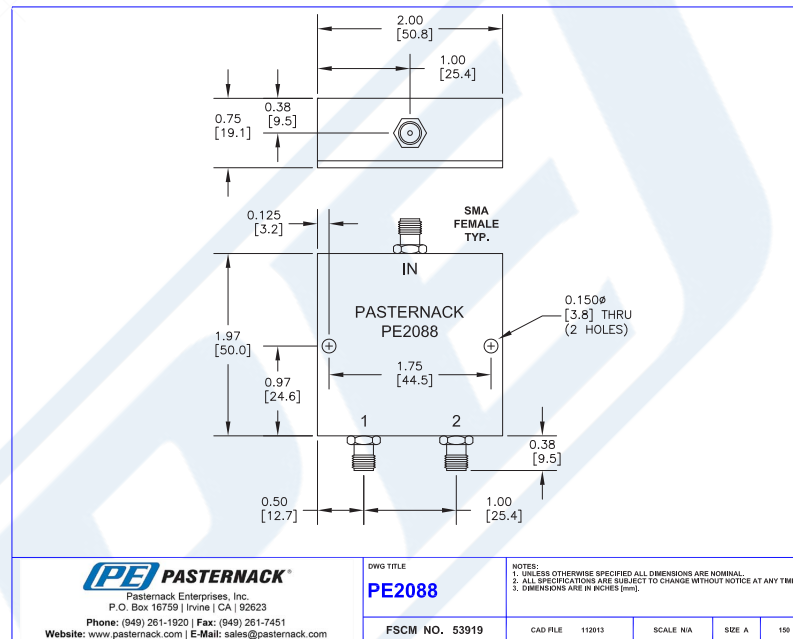
PE2088

#### Plotted and Other Data

Notes:

- Values at +25 °C, sea level

#### Outline Drawing



50 Ohm 2 Way SMA Wilkinson Power Divider From 690 MHz to 2.7 GHz Rated at 10 Watts from Pasternack Enterprises has same day shipment for domestic and International orders. Our RF, microwave and millimeter wave products maintain a 99% availability and are part of the broadest selection in the industry.

Click the following link (or enter part number in "SEARCH" on website) to obtain additional part information including price, inventory and certifications: [50 Ohm 2 Way SMA Wilkinson Power Divider From 690 MHz to 2.7 GHz Rated at 10 Watts PE2088](http://www.pasternack.com/2-way-sma-wilkinson-power-divider-690-mhz-2.7-ghz-10-watts-pe2088-p.aspx)

URL: <http://www.pasternack.com/2-way-sma-wilkinson-power-divider-690-mhz-2.7-ghz-10-watts-pe2088-p.aspx>

The information contained in this document is accurate to the best of our knowledge and representative of the part described herein. It may be necessary to make modifications to the part and/or the documentation of the part, in order to implement improvements. Pasternack reserves the right to make such changes as required. Unless otherwise stated, all specifications are nominal. Pasternack does not make any representation or warranty regarding the suitability of the part described herein for any particular purpose, and Pasternack does not assume any liability arising out of the use of any part or documentation.

Click the following link (or enter part number in "SEARCH" on website) to obtain additional part information including price, inventory and certifications: [50 Ohm 2 Way SMA Wilkinson Power Divider From 690 MHz to 2.7 GHz Rated at 10 Watts PE2088](http://www.pasternack.com/2-way-sma-wilkinson-power-divider-690-mhz-2.7-ghz-10-watts-pe2088-p.aspx)