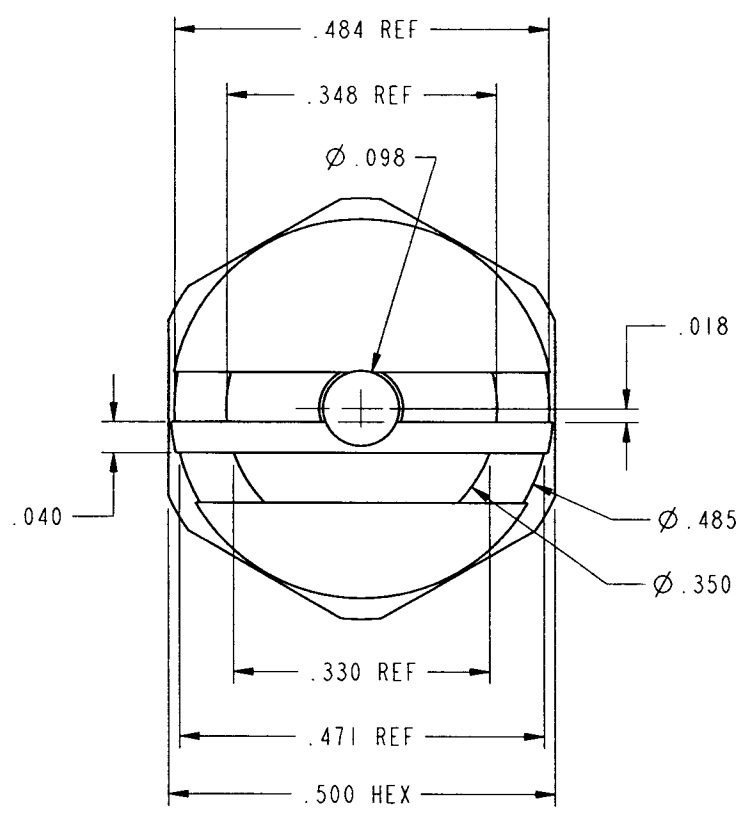
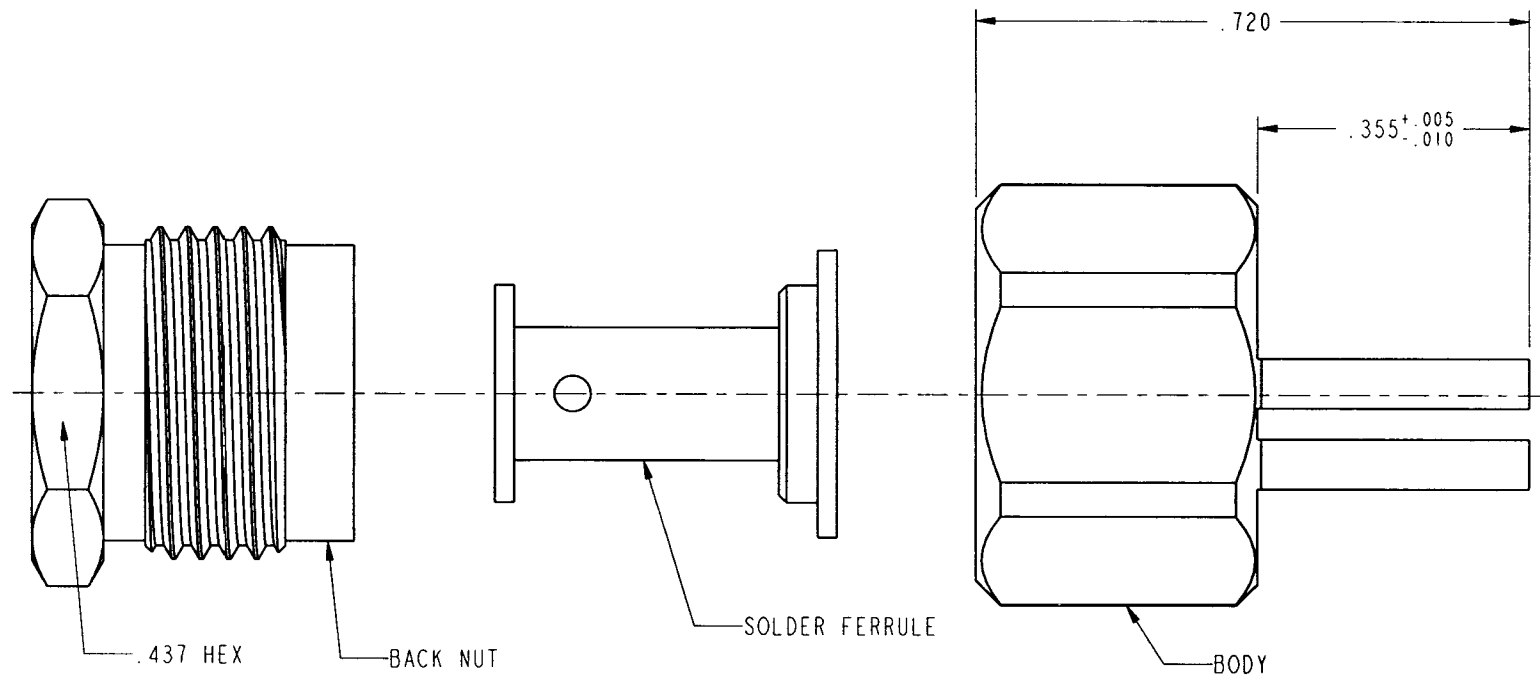
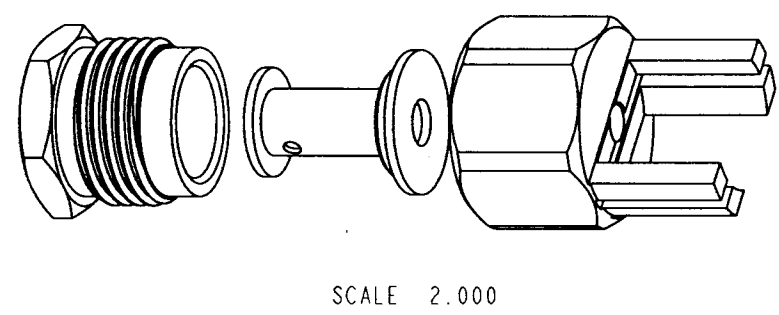


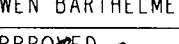
NOTES:

1. MATERIALS OF CONSTRUCTION  
BODY - BRASS, SILVER PLATED  
HARDWARE - BRASS, SILVER PLATED
2. FOR CABLE STRIPPING AND ASSEMBLY INSTRUCTIONS SEE  
SEE AMPHENOL SPEC. 349-50604 W/ EXCEPTION:  
.175" CENTER CONDUCTOR LENGTH WILL BE .425"  
RECOMMENDED.

716-101		REVISIONS			
DRAWING NO.	REV	DESCRIPTION	DATE	ECO	APPR
THIRD ANGLE PROJ.	A	RELEASE TO MFG.	1/31/00	43247	CPM/01B



CUSTOMER OUTLINE DRAWING  
FOR REFERENCE ONLY

UNLESS OTHERWISE SPECIFIED, DIMENSIONS ARE IN INCHES AND TOLERANCES ARE: 2 PLACE DECIMAL 3 PLACE DECIMAL ANGLES ±.015 (0,381 mm) ±.005 (0,127 mm) ± 1°  NOTICE - These drawings, specifications, or other data (1) are, and remain the property of Amphenol Corp. (2) must be returned upon request; and (3) are confidential and not to be disclosed to any person other than those to whom they are given by Amphenol Corp. The furnishing of these drawings, specifications, or other data by Amphenol Corp., or to any other person to anyone for any purpose is not to be regarded by implication or otherwise in any manner licensing, granting rights or permitting such holder or any other person to manufacture, use or sell any product, process or design, patented or otherwise, that may in any way be related to or disclosed by said drawings, specifications, or other data.	MATERIAL	DRAWN C. McGRATH	DATE 10/1/99	TITLE PC BOARD CONNECTOR FOR .141 S/R CABLE TO .031 THICK BOARD			Amphenol Amphenol Corporation Communication and Network Products Division Danbury, CT U.S.A. 06810		
	REFERENCE P/N 716-101-0001 GEN# ASSYF9-716B EAR# 967170 (SIMILAR TO 716-39) (611X-3805-400)	ENGINEER OWEN BARTHELMES	DATE 10/1/99						
			APPROVED 				DATE 1/26/00		
		CAD FILE I:\716\716-101	CODE ID 74868	DWG SIZE B	DRAWING NO. 716-101		REV A		
				SCALE: 4.0:1		SHEET 1 OF 1			