

1400 MHz < Fo < 1700 MHz

Band Pass

Slopes 10 MHz

Bandwidth 20 MHz

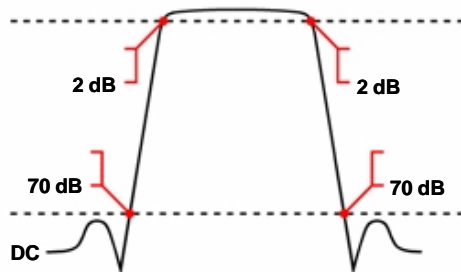
WBCD10-____

Attenuation 70 dB

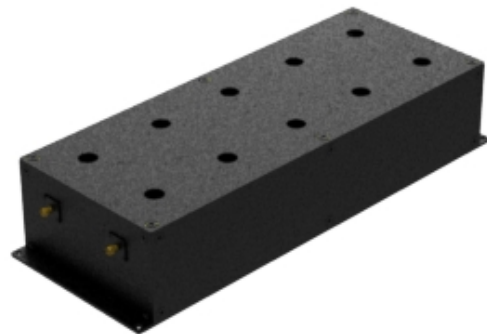
Specifications

Passband:	____ (Fo) ± 10 MHz = ____ to ____ MHz
Passband Insertion Loss:	1.25 dB max. at Fo (2 dB max. at corners)
Passband Return Loss:	14 dB min. (VSWR 1.5:1 max.)
Stopband:	DC to ____ MHz and ____ to ____ MHz
Stopband Attenuation:	70 dB min.
Operating Temperature:	15 °C to 45 °C
Power Handling:	will be quoted (<i>Please see our warranty in this regard</i>)
Dimensions (L x W x H):	max. 375 x 150 x 82 mm (plus connectors and flanges)
Approx. Weight:	6.35 kg
Mounting Provision:	7.5 mm flanges on both ends with 5.2 mm holes
Connector 1:	- Please choose -
Connector 2:	- Please choose -

Typical Performance

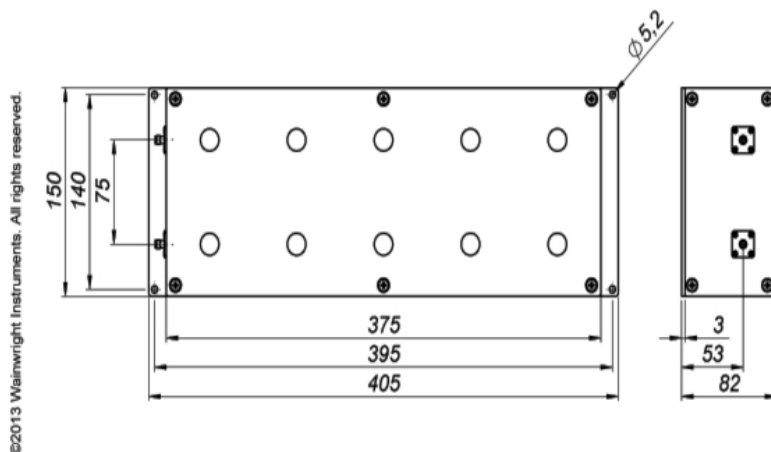


10 Section Cavity Design



Connector Options

SMA Female
SMA Male
N Female
N Male
BNC Female
BNC Male
7/16 Female



Euro Prices

(USD Prices will be quoted for US-based customers only)

1 - 4 pcs:	€ 1759
5 - 9 pcs:	€ 1671
10 - 24 pcs:	€ 1587

Delivery Terms

FCA Andechs (free carrier) according to **Incoterms 2010**
In Deutschland liefern wir frachtfrei gemäß CPT **Incoterms 2010** (unversichert).
Regarding payment terms and warranty see [Terms and Conditions](#).
Delivery time: normally 3 to 4 weeks - depending on quantity ordered and on our work load.

Customer is responsible for observing all applicable export laws in regard to filter application and location of end user



Wainwright Instruments GmbH
www.wainwright-filters.com

Tel: +49 8152 918230
Fax: +49 8152 918255
info@wainwright-filters.com