

THIS DRAWING IS PROPRIETARY AND CONFIDENTIAL.

REV.	DESCRIPTION	DATE	BY	APPVD
A	INITIAL RELEASE - ECO 106088	11/30/2010	CCF	RS

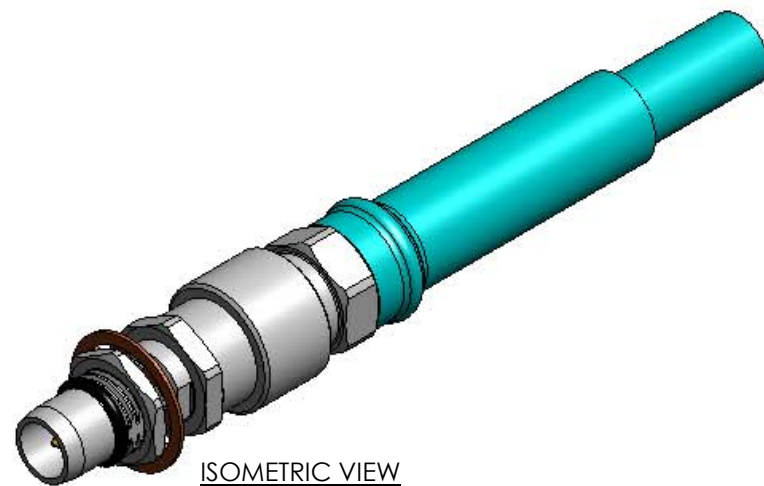
MECHANICAL CHARACTERISTICS	
INTERFACE	MIL-STD-348, FIGURE 321.1
IN ACCORDANCE WITH THE INTENT OF SLANT SHEET	MIL-PRF-31031/2 REF.
FORCE TO ENGAGE	3.0 LBS. MAX
FORCE TO DISENGAGE	1.5 LBS. MIN.
AXIAL CONTACT RETENTION (FROM INTERFACE)	6.0 LBS. MAX.
AXIAL CONTACT RETENTION (FROM CABLE)	6.0 LBS. MAX.
DURABILITY	1000 CYCLES MIN.
CABLE RETENTION	20 LBS. MIN.
MASS	6.68 GRAMS NOM.

ELECTRICAL CHARACTERISTICS	
IMPEDANCE	50 Ohms NOM.
MAXIMUM FREQUENCY	18 GHz
VSWR DC - 12.4 GHz	1.12:1 MAX.
12.4 - 18 GHz	1.18:1 MAX.
INSERTION LOSS	0.03 √F (GHz) dB MAX.
DIELECTRIC WITHSTANDING VOLTAGE	1200 Vrms MIN.
INSULATION RESISTANCE	5000 MegaOhms MIN.
RF LEAKAGE DC - 18 GHz	-90 dB MIN.
CORONA	400 Vrms MIN. @70,000 FEET
RF HIGH POTENTIAL	800 Vrms MIN.
CONTACT RESISTANCE (INNER)	3.0 MilliOhms MAX.
CONTACT RESISTANCE (OUTER)	2.0 MilliOhms MAX.

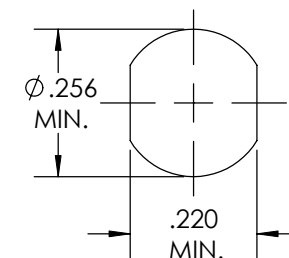
ENVIRONMENTAL CHARACTERISTICS	
OPERATING TEMPERATURE	-28 °C TO 125 °C
VIBRATION	MIL-STD-202, METHOD 204, CONDITION D
MECHANICAL SHOCK	MIL-STD-202, METHOD 213, CONDITION I
THERMAL SHOCK	MIL-STD-202, METHOD 107, CONDITION B
MOISTURE RESISTANCE	MIL-STD-202, METHOD 106, CONDITION (NO VIBRATION)
CORROSION	MIL-STD-202, METHOD 101, CONDITION B, 5%

MATERIALS AND FINISH	
CONTACT & FLEE	BERYLLIUM COPPER PER ASTM-B-196, GOLD PLATE PER MIL-DTL-45204, OVER NICKEL PLATE PER AMS-QQ-N-290.
DIELECTRIC BEAD & DIELECTRIC STOP	POLYETHERIMIDE THERMOPLASTIC, PER ASTM-D-5205
BODY & SLEEVE	STEEL, CORROSION RESISTANT, PER ASTM-A-582, UNS NO. S30300, PASSIVATE PER ASTM-A-967
LOCKNUT	STEEL, CORROSION RESISTANT, PER ASTM-A-582, UNS NO. S30300, GOLD PLATED PER MIL-DTL-45204, OVER NICKEL PLATE AMS-QQ-N-290
LOCKWASHER	TIN BRASS (UNS C42500) PER ASTM-B-591 OR PHOSPHOR BRONZE (C5191R-H) PER JIS H3110, GOLD PLATE PER MIL-DTL-45204, OVER NICKEL PLATE PER AMS-QQ-N-290
GASKET	FLUOROCARBON ELASTOMER (VITON) PER ASTM-D-1418 55-65 DUROMETER

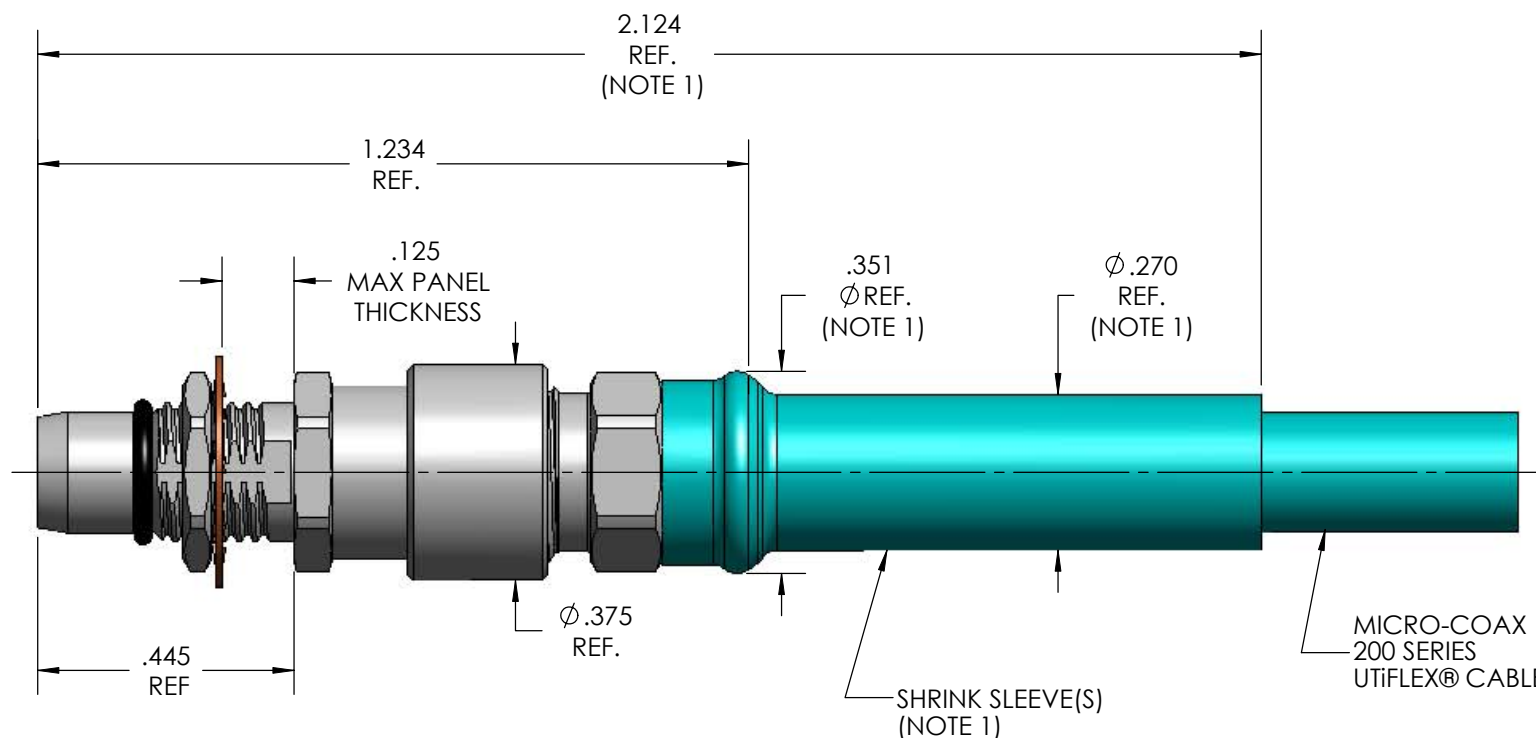
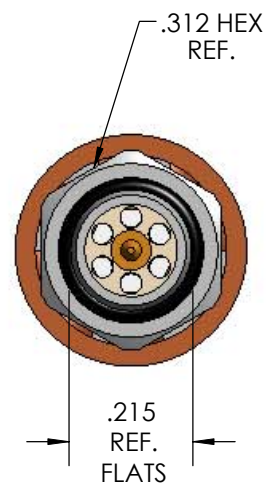
APPLICATION	
CABLE(S)	200 SERIES CABLE
INSTALLATION	PER CONFIGURATOR



ISOMETRIC VIEW
SCALE 2:1



RECOMMENDED
PANEL CUT OUT



NOTE:

1. MARKER LOCATION ON THIS DRAWING IS FOR REFERENCE ONLY AND IS SUBJECT TO CHANGE WITHOUT NOTICE.

SPECIFICATION DRAWING

THIS SPECIFICATION IS THE PROPERTY OF MICRO-COAX, INC. AND MAY NOT BE USED OR COPIED WITHOUT THE EXPRESS WRITTEN PERMISSION OF MICRO-COAX, INC.	INITIALS		DATE		<p>Leading the way in transmission line solutions. Copyright Micro-Coax, Inc.</p>					
	DWN.	MJM	5/22/08							
	CHKD.	MJM	11/2/10							
	APPVD.									
TOLERANCES UNLESS OTHERWISE SPECIFIED		TITLE								
.XX	± .02	BMA BULKHEAD PLUG, 200 SERIES								
.XXX	± .005	ALL DIMENSIONS IN INCHES UNLESS OTHERWISE SPECIFIED. SCREW THDS. TO BE IN ACCORD WITH ANSI B1.1-1989.		FSCM NO.	SIZE	SCALE	SHEET NO.	DRAWING NO.	REV	
.XXX	± .0010	64639	B	3:1	1 OF 1	SD903805	A			
ANGLES	± 2°									