



1 Watt RF Load Up To 12.4 GHz With QMA Male Input Nickel Plated Brass

TECHNICAL DATA SHEET

PE6164

Configuration

Connector	QMA Male
Heat Sink	Brass, Nickel
Heat Sink Specification	100µ in. minimum
Connection Method	Standard
Body Style	Straight

Electrical Specifications (Values at 25°C, sea level)

Description	Minimum	Typical	Maximum	Units
Frequency Range	DC		12.4	GHz
Impedance		50		Ohms
VSWR			1.22:1	
Input Power			1	Watts
Peak Power			200	Watts

Specifications by Frequency

Description	F1	F2	F3	F4	F5	Units
Range	DC to 3	3 to 6	6 to 12.4			GHz
VSWR	1.1:1	1.15:1	1.22:1			
Return Loss	26.44	23.13	20.07			dB

Mechanical Specifications

Temperature

Operating Range	-55 to +125 deg C
-----------------	-------------------

Size

Length	0.68 in [17.27 mm]
Width/Dia.	0.41 in [10.41 mm]

Connector

Type	QMA Male
Mating Cycles	100
Inner Conductor Material and Plating	Brass, Gold
Inner Conductor Plating Specification	30µ in. minimum
Outer Conductor Material and Plating	Spring Copper, Nickel
Body Material and Plating	Brass, Nickel
Body Plating Specification	100µ in. minimum
Dielectric Type	PTFE

Click the following link (or enter part number in "SEARCH" on website) to obtain additional part information including price, inventory and certifications: [1 Watt RF Load Up To 12.4 GHz With QMA Male Input Nickel Plated Brass PE6164](#)



1 Watt RF Load Up To 12.4 GHz With QMA
Male Input Nickel Plated Brass

TECHNICAL DATA SHEET

PE6164

Compliance Certifications (visit www.Pasternack.com for current document)

RoHS Compliant

REACH Compliant

12/19/2011

Plotted and Other Data

Notes:

- Values at +25 °C, sea level

Click the following link (or enter part number in "SEARCH" on website) to obtain additional part information including price, inventory and certifications: [1 Watt RF Load Up To 12.4 GHz With QMA Male Input Nickel Plated Brass PE6164](#)

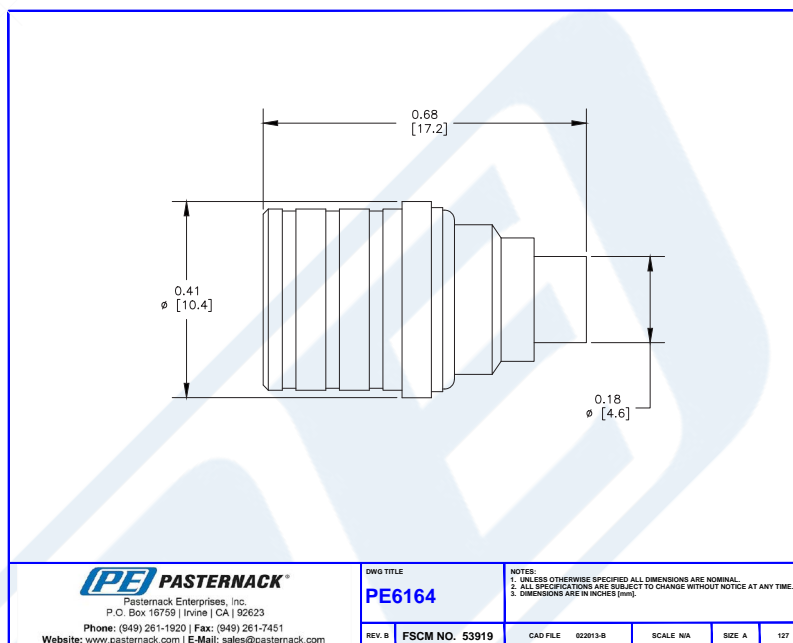


1 Watt RF Load Up To 12.4 GHz With QMA Male Input Nickel Plated Brass

TECHNICAL DATA SHEET

PE6164

Outline Drawing



1 Watt RF Load Up To 12.4 GHz With QMA Male Input Nickel Plated Brass from Pasternack Enterprises has same day shipment for domestic and International orders. Our RF, microwave and millimeter wave products maintain a 99% availability and are part of the broadest selection in the industry.

Click the following link (or enter part number in "SEARCH" on website) to obtain additional part information including price, inventory and certifications: [1 Watt RF Load Up To 12.4 GHz With QMA Male Input Nickel Plated Brass PE6164](http://www.pasternack.com/1-watts-qma-male-rf-load-up-to-12.4-ghz-pe6164-p.aspx)

URL: <http://www.pasternack.com/1-watts-qma-male-rf-load-up-to-12.4-ghz-pe6164-p.aspx>

The information contained in this document is accurate to the best of our knowledge and representative of the part described herein. It may be necessary to make modifications to the part and/or the documentation of the part, in order to implement improvements. Pasternack reserves the right to make such changes as required. Unless otherwise stated, all specifications are nominal. Pasternack does not make any representation or warranty regarding the suitability of the part described herein for any particular purpose, and Pasternack does not assume any liability arising out of the use of any part or documentation.