



SMP Male Limited Detent Connector Solder Attachment
Surface Mount PCB Right Angle Center Contact

TECHNICAL DATA SHEET

PE44946

Configuration

Connector	SMP Male, Limited Detent
Connector Specification	MIL-STD-348
Connector Interface Type	Surface Mount
Attachment Method (Shield/Contact)	Solder
Body Style	Straight

Electrical Specifications

Impedance	50 Ohms
-----------	---------

Mechanical Specifications

Size

Length	0.2 in [5.08 mm]
Width/Dia.	0.165 in [4.19 mm]
Weight	0.082 lbs [37.19 g]

Connector

Type	SMP Male
Contact Material and Plating	Beryllium Copper, Gold
Contact Plating Specification	MIL-STD-45204
Body Material and Plating	Beryllium Copper, Gold
Body Plating Specification	MIL-G-45204
Dielectric Type	Torlon

Compliance Certifications (visit www.Pasternack.com for current document)

RoHS Compliant

Click the following link (or enter part number in "SEARCH" on website) to obtain additional part information including price, inventory and certifications: [SMP Male Limited Detent Connector Solder Attachment Surface Mount PCB Right Angle Center Contact PE44946](#)



SMP Male Limited Detent Connector Solder Attachment
Surface Mount PCB Right Angle Center Contact

TECHNICAL DATA SHEET

PE44946

Plotted and Other Data

Notes:

- Values at +25 °C, sea level

SMP Male Limited Detent Connector Solder Attachment Surface Mount PCB Right Angle Center Contact from Pasternack Enterprises has same day shipment for domestic and International orders. Our RF, microwave and millimeter wave products maintain a 99% availability and are part of the broadest selection in the industry.

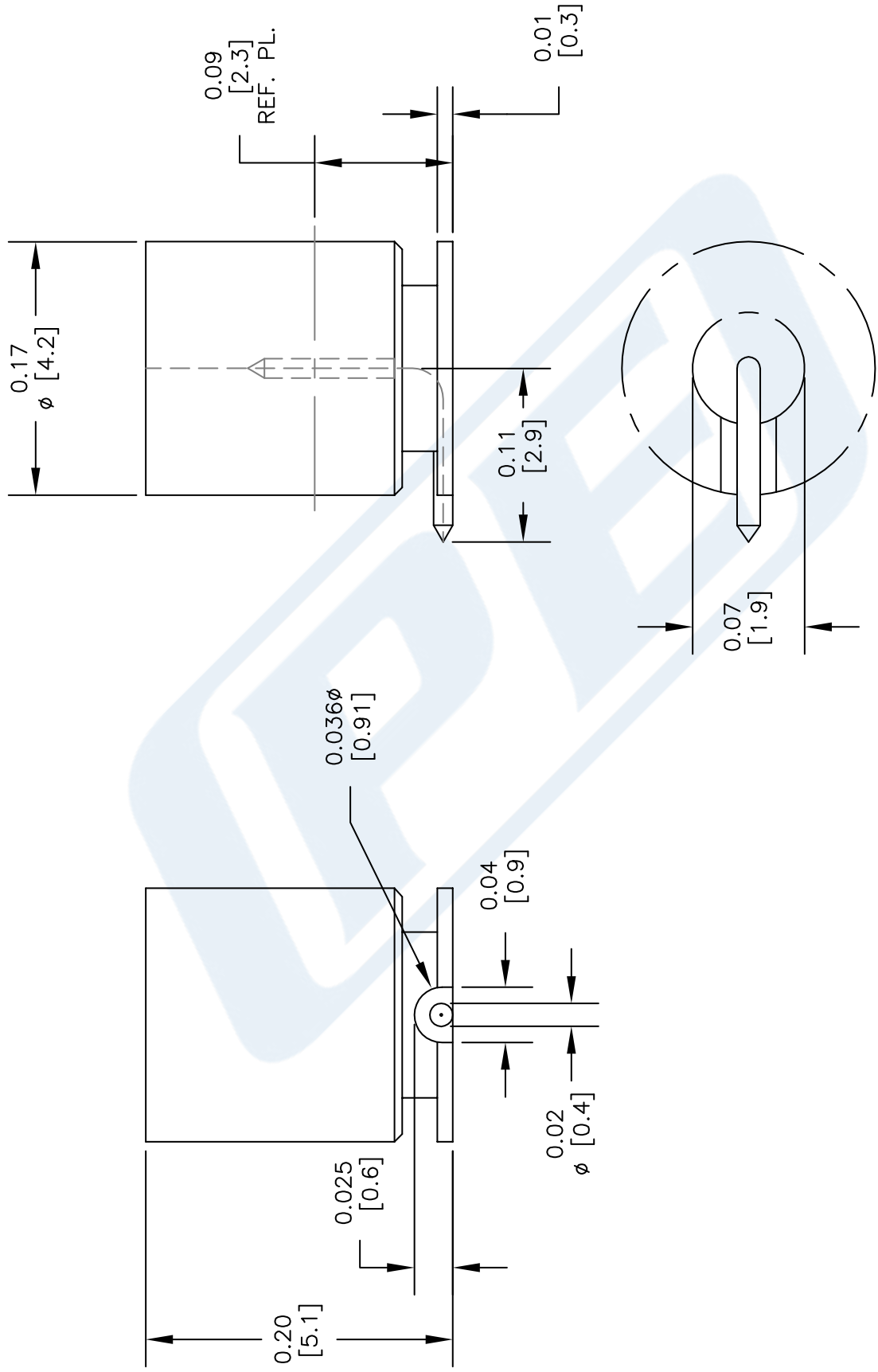
Click the following link (or enter part number in "SEARCH" on website) to obtain additional part information including price, inventory and certifications: [SMP Male Limited Detent Connector Solder Attachment Surface Mount PCB Right Angle Center Contact PE44946](#)

URL: <http://www.pasternack.com/smp-male-standard-surface-mount-pcb-connector-pe44946-p.aspx>

The information contained in this document is accurate to the best of our knowledge and representative of the part described herein. It may be necessary to make modifications to the part and/or the documentation of the part, in order to implement improvements. Pasternack reserves the right to make such changes as required. Unless otherwise stated, all specifications are nominal. Pasternack does not make any representation or warranty regarding the suitability of the part described herein for any particular purpose, and Pasternack does not assume any liability arising out of the use of any part or documentation.

PE44946 CAD Drawing

SMP Male Limited Detent Connector Solder Attachment
Surface Mount PCB Right Angle Center Contact



NOTES:
1. UNLESS OTHERWISE SPECIFIED ALL DIMENSIONS ARE NOMINAL.
2. ALL SPECIFICATIONS ARE SUBJECT TO CHANGE WITHOUT NOTICE AT ANY TIME.
3. DIMENSIONS ARE IN INCHES [mm].

DWG TITLE
PE44946

FSCM NO. 53919

CAD FILE 110413

SCALE N/A

SIZE A

150

PE PASTERNAK®
Pasternack Enterprises, Inc.
P.O. Box 16759 | Irvine | CA | 92623
Phone: (949) 261-1920 | Fax: (949) 261-7451
Website: www.pasternack.com | E-Mail: sales@pasternack.com