



# EUROPEAN ANTENNAS

Excellence through design  
Creative in concept

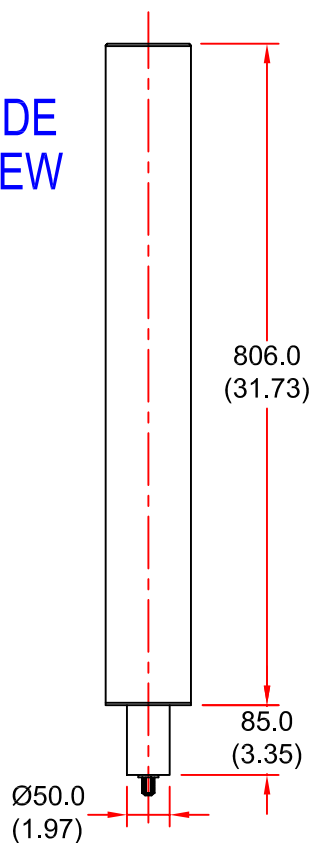


## HIGH GAIN OMNI ANTENNA

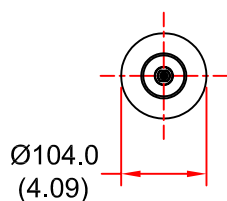
MODEL: RCO10-2460/255

FREQUENCY:	2.40 - 2.55 GHz	GAIN:	10 dBiC
POLARISATION:	Right Hand Circular	BEAMWIDTH:	360° (Azimuth) x 10° (Elevation)
AXIAL RATIO:	2 - 3 dB	VSWR:	1.5:1
POWER RATING:	20 W	FRONT TO BACK:	N/A
TEMPERATURE:	-20°C to +50°C	MASS:	2.0 Kg / 4.4 lbs
FINISH:	Gloss White	WIND LOADING:	14.2 Kg / 31.2 lbs @ 100 mph

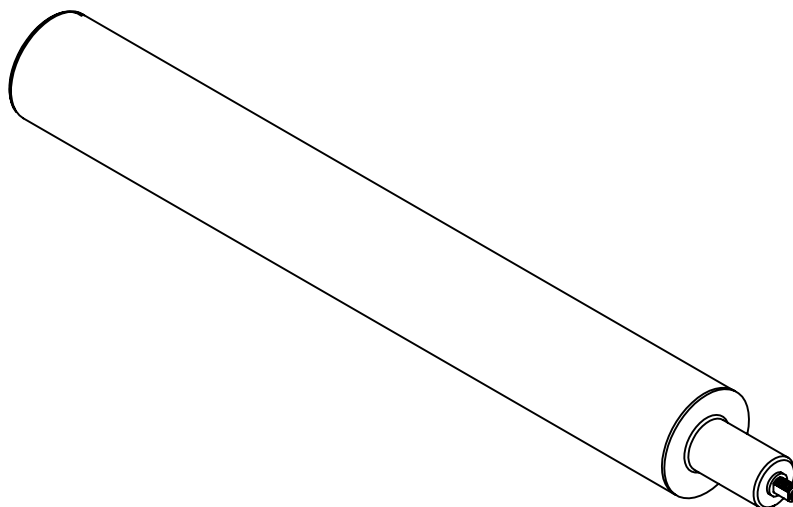
SIDE  
VIEW



END  
VIEW



ISOMETRIC VIEW



N(F) CONNECTOR

DIMENSIONS: mm (inches)

GA 255-1 Issued 100902

EUROPEAN ANTENNAS LTD.

LAMBDA HOUSE, CHEVELEY,  
NEWMARKET, SUFFOLK, CB8 9RG,  
UNITED KINGDOM.

TEL: +44 (0)1638 731888

FAX: +44 (0)1638 731999

E-Mail: [sales@european-antennas.co.uk](mailto:sales@european-antennas.co.uk)

Website: [www.european-antennas.co.uk](http://www.european-antennas.co.uk)

European Antennas Ltd. has a policy of continuous development and therefore stress that the data contained on this sheet should be used for guidance only.