

## MECHANICAL

CONTACT: BREAK BEFORE MAKE  
ACTUATOR: FAILSAFE  
SWITCHING SPEED: 20 mSEC MAX

## ELECTRICAL

ACTUATOR VOLTAGE: 28.0 Vdc (22.0–32.0 Vdc)  
ACTUATOR CURRENT: 0.100 A MAX @ 28.0 Vdc  
POWER HANDLING: 200W CW @ 1.0 GHz

## ENVIRONMENTAL

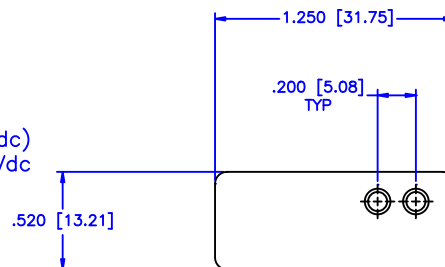
OPERATING TEMP: -54° C TO +90° C  
SINE VIBRATION: 30 G'S rms  
LIFE: 1,000,000 CYCLES  
RANDOM VIBRATION: 20 G'S rms

## REVISIONS

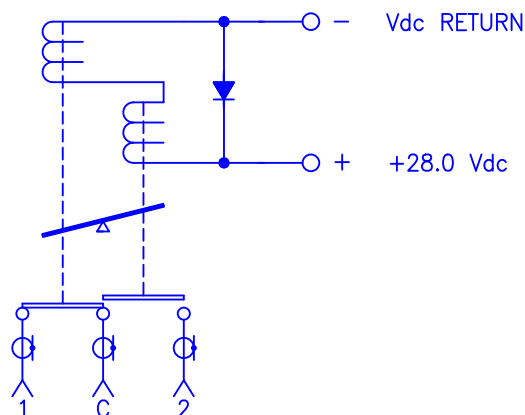
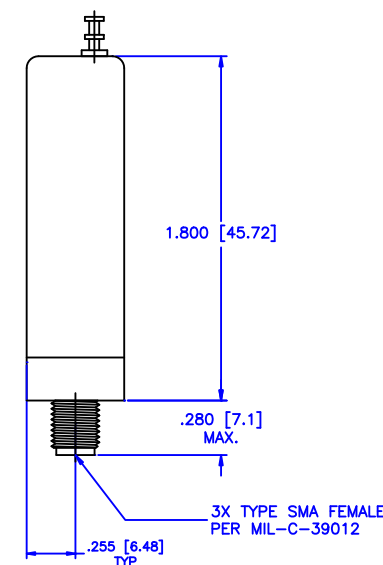
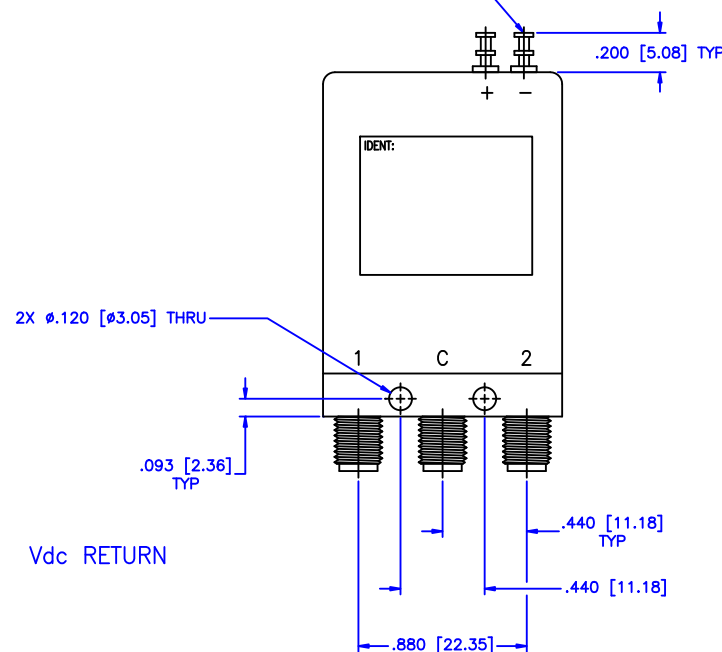
ZONE	REV	DESCRIPTION	Date	APPROVED
------	-----	-------------	------	----------

## SPECIFICATION:

FREQUENCY RANGE (GHz):	DC–2.0	2.0–4.0
VSWR (Max.):	1.20:1	1.25:1
INSERTION LOSS (dB):	0.20	0.25
ISOLATION (dB):	90	80
IMPEDANCE (Ohms):	50	



SOLDERING TERMINALS



MATERIAL:

**MCLI**

MICROWAVE COMMUNICATIONS LABORATORIES INC.  
7255 30TH AVE. N. SAINT PETERSBURG, FL 33710  
TEL: (727) 344-6254 FAX: (727) 381-6116  
<http://WWW.MCLI.COM>

SCALE: N/A  
SHEET: N/A

UNLESS OTHERWISE SPECIFIED:  
TOLERANCES  
IN (INCHES) OR (mm) (MILLIMETERS)  
FRACTIONS:  $\pm 1/64$   
DECIMALS:  $\pm 0.01 \pm 0.005$   
ANGLE:  $\pm 1/2^\circ$

DRAWING TITLE:

ELECTROMECHANICAL SWITCHES

PART NO.

K2-3-FS

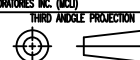
DRAWN: Paiboon Luekhamhan

DATE: 04-03-2001

APPROVED: T. Nguyen

DATE: 04-03-2001

PROPRIETARY NOTICE:  
THE INFORMATION IN THIS DRAWING IS PROPRIETARY  
AND SHALL NOT BE USED OR DISCLOSED WITHOUT WRITTEN  
PERMISSION FROM MICROWAVE COMMUNICATIONS  
LABORATORIES INC. (MCLI)



CAGE CODE:

OD2L5

SIZE:

A

REV:

N/A

DWG NO.

81648

DO NOT SCALE THE DRAWING