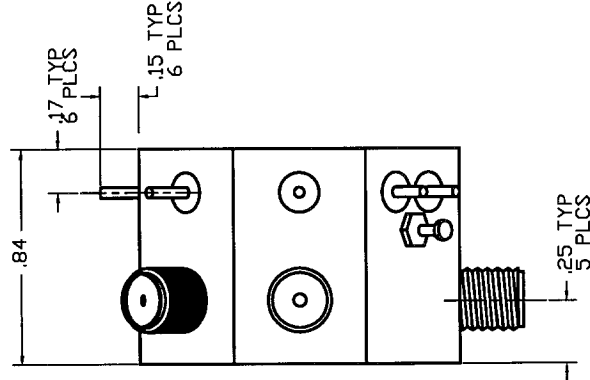
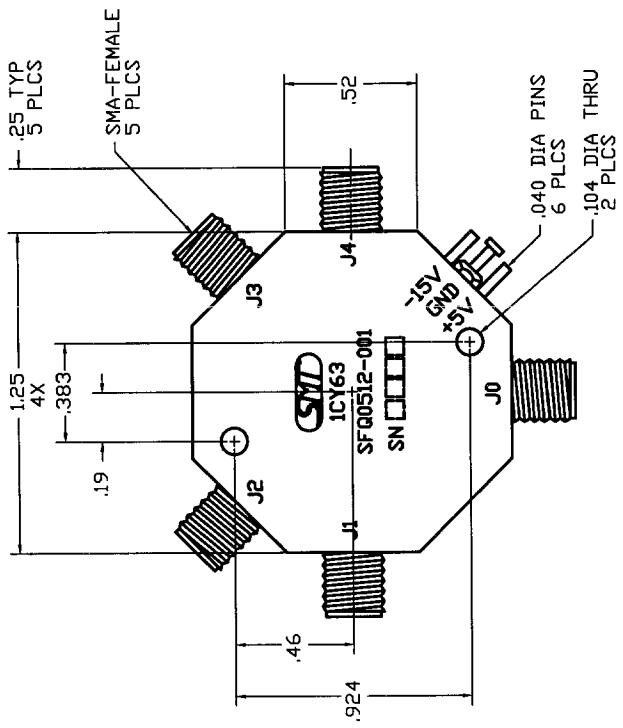


REVISIONS			
REV.	DESCRIPTION	DATE	APPROVED
1	INITIAL RELEASE		



### SPECIFICATIONS:

FREQUENCY RANGE:	0.5 - 12.0 GHz
VSWR:	0.5-12.0 GHz ----- 1.8:1 MAX
INSERTION LOSS:	0.5-4.0 GHz ----- 1.4 dB MAX
	4.0-8.0 GHz ----- 1.8 dB MAX
	8.0-12.0 GHz ----- 2.3 dB MAX
ISOLATION:	0.5-12.0 GHz ----- 65 dB MIN
SWITCHING SPEED:	25 nSEC MAX
(50% TTL to 10/90% RF)	
DC POWER:	+5V @ 125 mA MAX
	-15V @ 50 mA MAX
CONTROL:	TTL LOW - INSERTION LOSS
	TTL HIGH - ISOLATION
OPERATING TEMP.:	-55° TO +100° C
STORAGE TEMP.:	-65° TO +125° C

QTY	FSCM	PART OR	NOMENCLATURE	MATERIAL
REQD	NL	IDENTIFYING NO.	OR DESCRIPTION	SPECIFICATION
PARTS LIST				
FRACTIONS DECIMALS ANGLES		SIERRA MICROWAVE TECHNOLOGY		
± .XX± .01 ±		OUTLINE FOR SFQ0512-001		
XXX± .020				
MATERIAL		APPROVALS	DATE	REV.
		DRAWN		
		A. WILSON		
		CHECKED		
		ISSUED		
FINISH		SIZE	FSCM NL	DWG. NL
			B	605-0225-001
NEXT ASSY		SCALE	1CY63	
USED IN		SHEET		
APPLICATION				