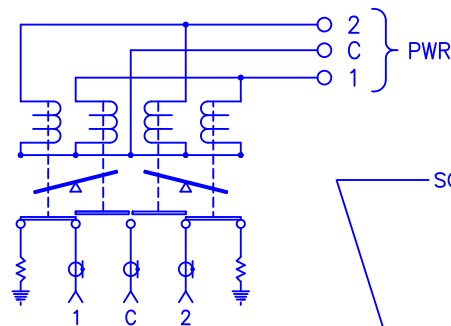
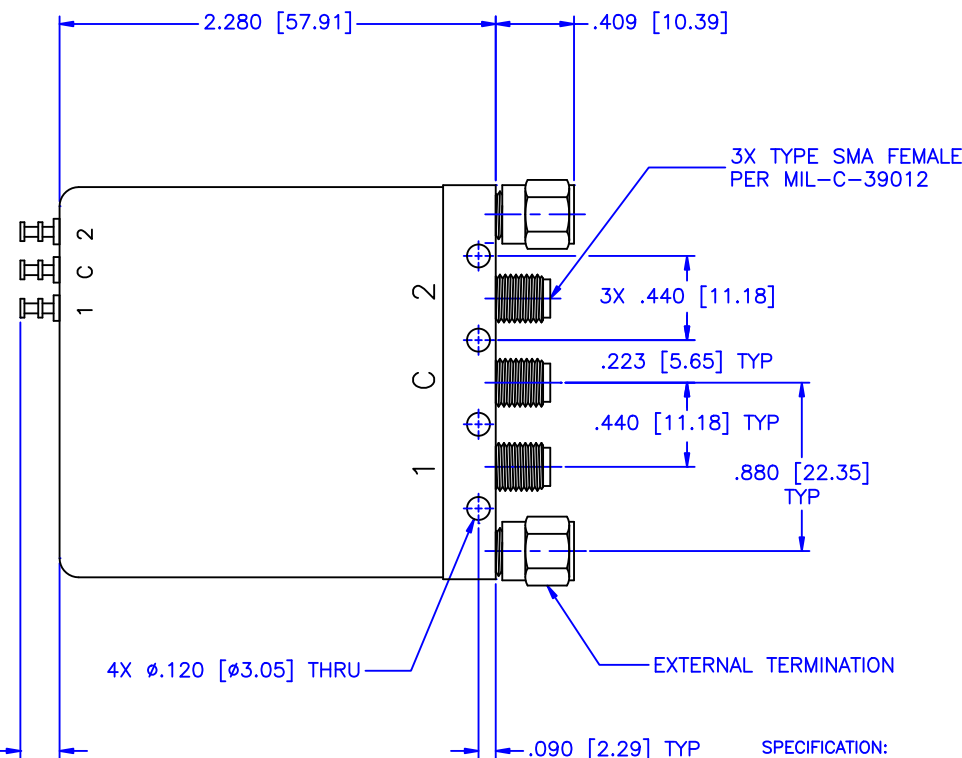
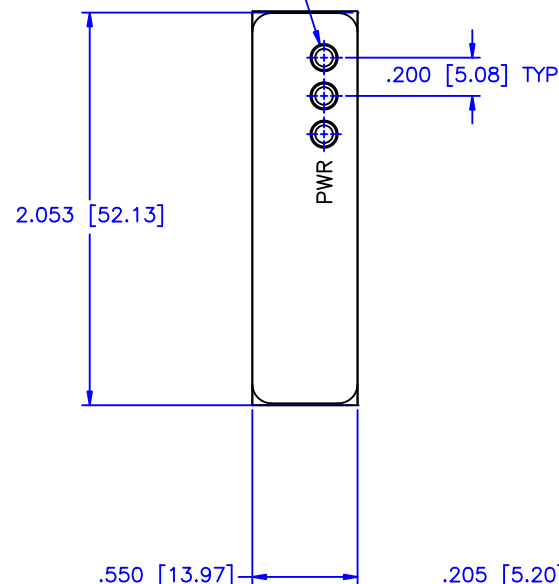


# REVISIONS

ZONE	REV	DESCRIPTION	Date	APPROVED
------	-----	-------------	------	----------



SOLDER TERMINAL



## SPECIFICATION:

FREQUENCY RANGE (GHz):	DC-2.0	2.0-4.0
VSWR (Max.):	1.20:1	1.25:1
INSERTION LOSS (dB):	0.20	0.25
ISOLATION (dB):	90	80

## MECHANICAL

CONTACT: BREAK BEFORE MAKE  
ACTUATOR: LATCHING  
SWITCHING SPEED: 20 mSEC MAX

## ELECTRICAL

ACTUATOR VOLTAGE: 28.0±3.0 Vdc  
ACTUATOR CURRENT: 0.075 A MAX @ 28.0 Vdc  
POWER HANDLING: 200W CW @ 1.0 GHz  
IMPEDANCE: 50 Ohms

## ENVIRONMENTAL

OPERATING TEMP: -54° C TO +90° C  
SINE VIBRATION: 30 G'S rms  
LIFE: 1,000,000 CYCLES  
RANDOM VIBRATION: 20 G'S rms

MATERIAL:		MICROWAVE COMMUNICATIONS LABORATORIES INC. 7255 30TH AVE. N. SAINT PETERSBURG, FL 33710 TEL: (727) 344-6254 FAX: (727) 381-6116 http://WWW.MCLI.COM		SCALE: N/A	
UNLESS OTHERWISE SPECIFIED: TOLERANCES IN (INCHES) OR (mm) (MILLIMETERS) FRACTIONS: ± 1/64 DECIMALS: ±.01 ±.005 ANGLE: ±1/2°		DRAWING TITLE: ELECTROMECHANICAL SWITCHES			
DRAWN: Paiboon Luekhamhan		DATE: 03-11-2009		PART NO. K45-3-L	
APPROVED: T. Nguyen		DATE: 03-11-2009		CAGE CODE: 0D2L5	
THIRD ANGLE PROJECTION		SIZE: A		REV: N/A	
		DO NOT SCALE THE DRAWING		DWG NO. 84269	