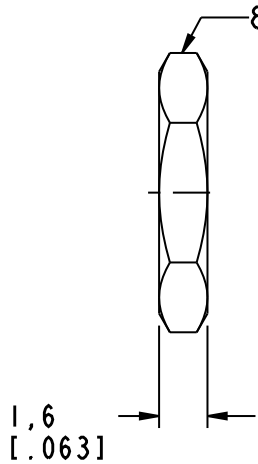


- NOTES:
1. MATERIAL AND FINISH (PLATING THICKNESS IN MICRO-INCHES):
- HOUSIONG WITH BODY - BRASS, GOLD PLATING (.000003 MIN. THICK)
 - CONTACT PIN - BERULLIUM COPPER, GOLD PLATING (.000050 MIN. THICK)
 - INSULATOR(2) - PTFE, NATURAL
 - CONTACT PIN - BRASS ,GOLD PLATING (.000050 MIN. THICK)
 - COVER & LOCK WASHER - BRASS, GOLD PLATING (.000003 MIN. THICK)
2. ELECTRICAL:
- A. IMPEDANCE:50 OHM
 - D. DIELECTRIC WITHSTANDING VOLTAGE:500 VRMS. MIN.
3. MECHANICAL:
- A. DURABILITY:500 CYCLES MIN.
 - B. TEMPERATURE RANGE:-65°C TO +165°C
4. PACKAGING AND BARCODE LABLING PER SYMBOL REQUIREMENTS (SEE AMPHENOL 349-50728)

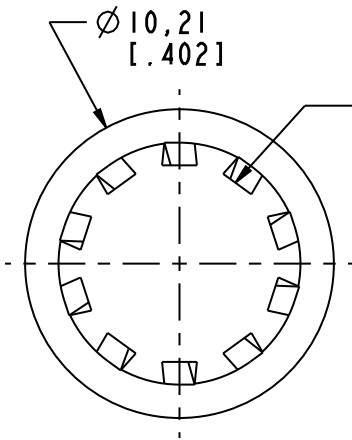
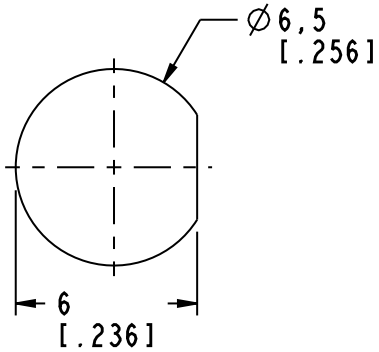
THIRD ANGLE PROJ.

REVISIONS

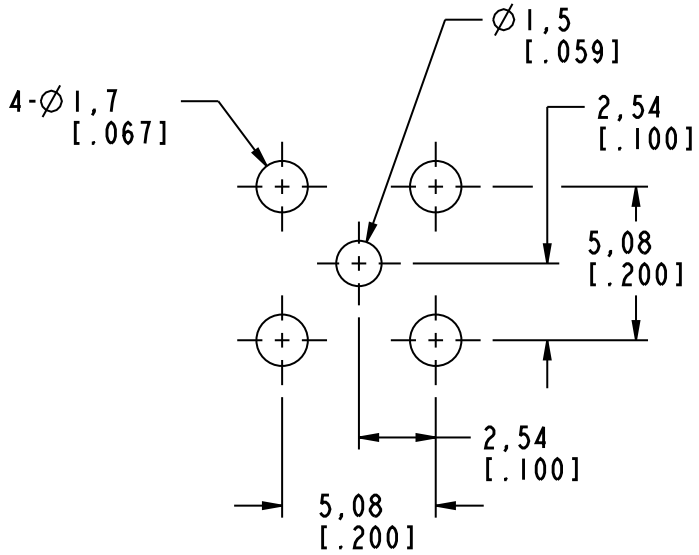
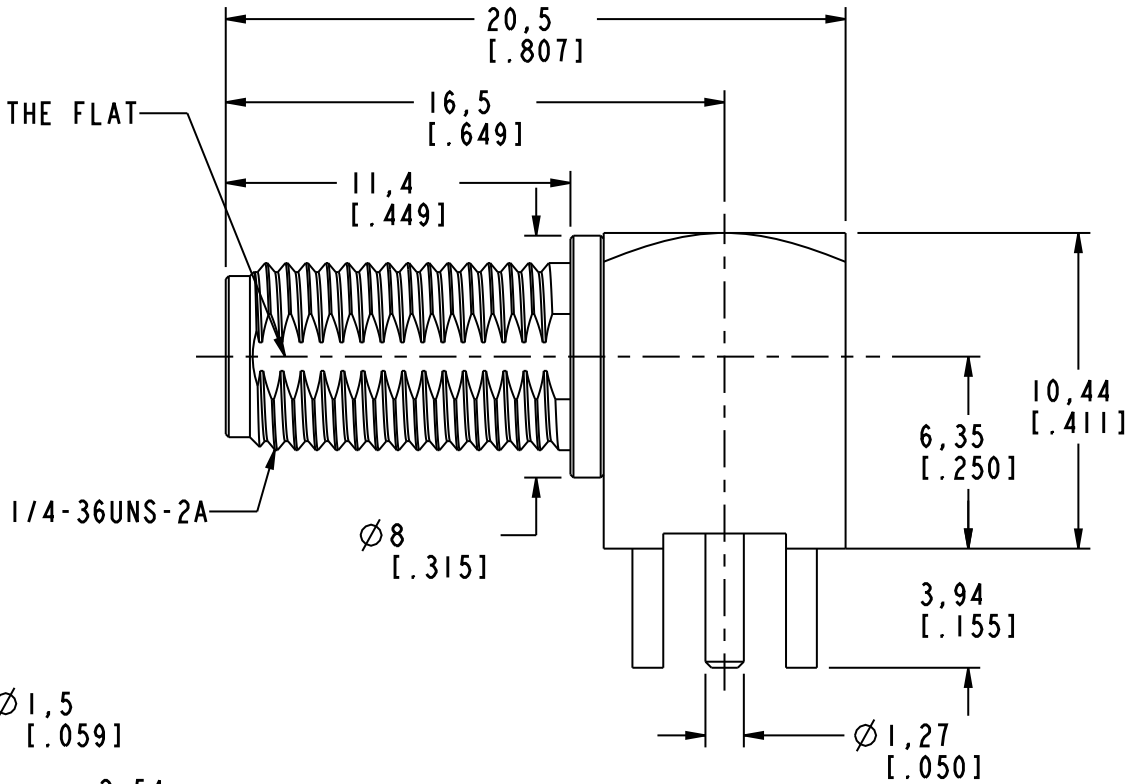
REV	DESCRIPTION	DATE	ECO	APPR
A	RELEASE TO MFG.	5/20/05	45549	HP
B	USE NEW FORMAT ; NOTE 4 WAS CHANGED	24-Nov-10	48323	SCOTT



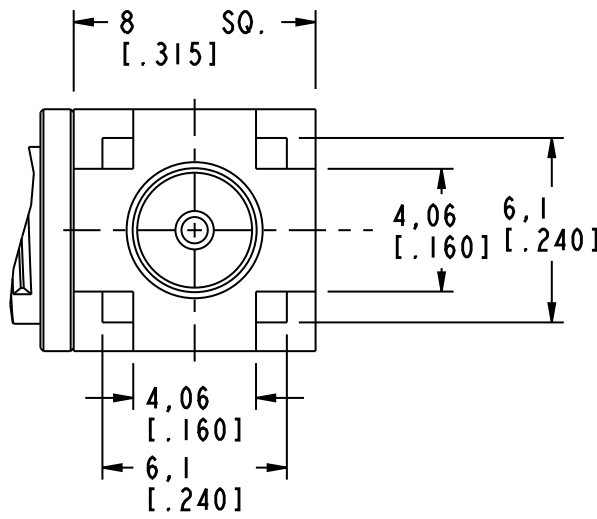
RECOMMENDED
MOUNTING HOLE DIM'S



5.85 ON THE FLAT



RECOMMENDED
PCB MOUNTING HOLES



CUSTOMER OUTLINE DRAWING
ALL OTHER SHEETS ARE FOR INTERNAL USE ONLY

UNLESS OTHERWISE SPECIFIED, DIMENSIONS ARE IN METRIC AND TOLERANCES ARE: <0.5mm 0.5 - 6mm 6 - 30mm 30 - 120mm ANGLES ± 0.05mm ±0.1mm ±0.2mm ± 0.3mm ±1° NOTICE - These drawings, specifications, or other data (1) are, and remain the property of Amphenol corp. (2) must be returned upon request; and (3) are confidential and not to be disclosed to any person other than those to whom they are given by Amphenol Corp. the furnishing of these drawings, specifications, or other data by Amphenol Corp., or to any other person to anyone for any purpose is not to be regarded by implication or otherwise in any manner licensing, granting rights to permitting such holder or any other person to manufacture, use or sell any product, process or design, patented or otherwise, that may in any way be related to or disclosed by said drawings, specifications, or other data.	MATERIAL	DRAWN F.WANG	DATE 24-Nov-10	TITLE SMA R/A BULKHEAD P.C. MOUNT JACK		Amphenol RF Danbury CT USA, Tainan, Taiwan, Shenzhen, China www.amphenolrf.com	
		ENGINEER H.PARIKH	DATE 02-Aug-02				
	REFERENCE AND	APPROVED SCOTT.H	DATE 24-Nov-10	SCALE: 1.0:1.0		SHEET 2 OF 2	
	CONFIGURATION LEVEL:	CAD FILE	DWG SIZE B		REV B		
	FINISH	I:/SMA/SMA6252A9-3GT50G-50					
DRAWING NO. SMA6252A9-3GT50G-50							
ITEM NO. 116252AAA01GA5F							
PART NO 901-10172							