

7/16 F-F BULKHEAD ADAPTER

SM3387

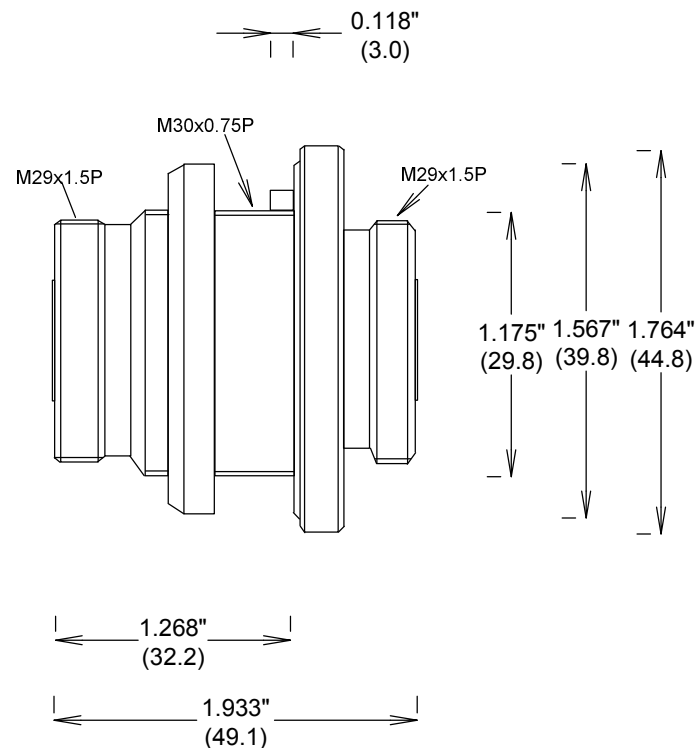
SPECIFICATIONS

ELECTRICAL

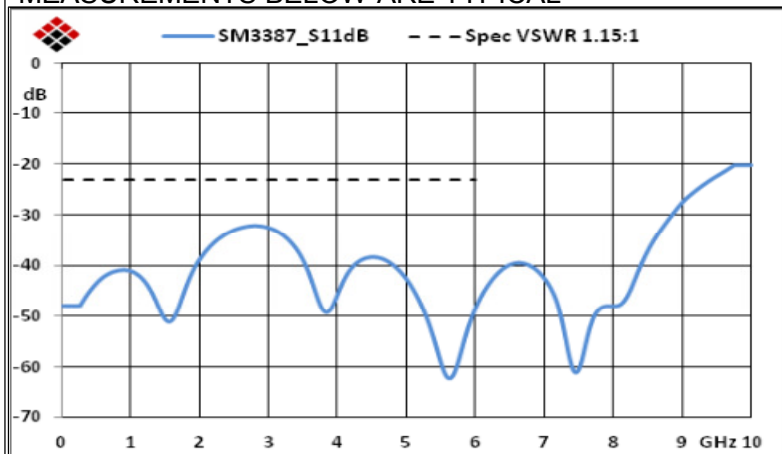
FREQUENCY: 0-6 GHZ
IMPEDANCE: 50 OHMS
VSWR: 1.15:1 MAX

MECHANICAL

MATERIALS 7/16 BODY: PASS 5 STEEL
MALE CONTACTS BRASS, Si PLATING
INSULATOR: TEFLON
RECOMMENDED TORQUE 7-16 221 IN-LBS
DURABILITY: 500 CYCLES MIN
OTHER SPECIFICATIONS PER DIN 47223
OPERATING TEMP: -45° TO +125°DEG C
ROHS COMPLIANT



MEASUREMENTS BELOW ARE TYPICAL



ALL DIMENSIONS IN inches(MM) Typical

FAIRVIEW MICROWAVE INC.

ALLEN, TX 75013 WWW.FAIRVIEWMICROWAVE.COM

TITLE

7/16 F-F BULKHEAD ADAPTER

| SIZE | CAGE CODE | DWG NO | REV |
|----------|-----------|---------------|----------|
| A | 3FKR5 | SM3387 | A |
| SCALE | | SHEET | |