

SPEC SHEET

MW500-1453

1750 MHz to 2000 MHz

VOLTAGE CONTROLLED OSCILLATORS



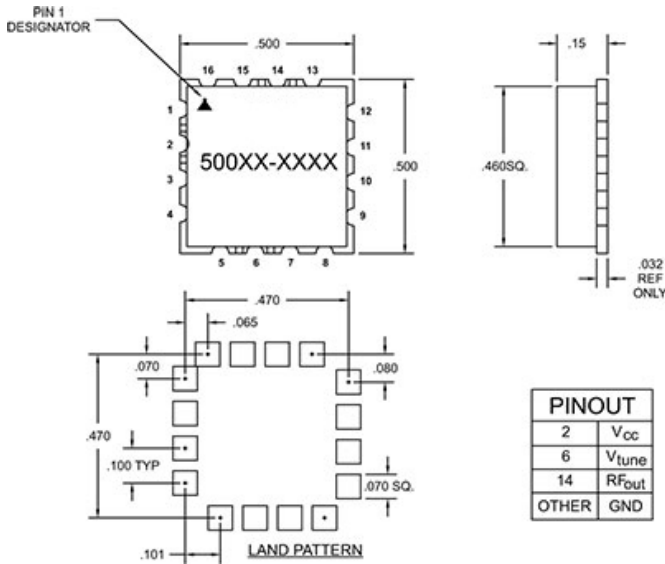
Specifications

Frequency	1750 MHz to 2000 MHz
Tuning Voltage	1/10 V
Power Output	7 +/- 2 dBm
Phase Noise	10 kHz Offset -97 (typ) dBc/Hz 100 kHz Offset -119 (typ) dBc/Hz
Frequency Pushing	2 MHz/V
Frequency Pulling	8 MHz
Harmonic Suppression	-15 (MAX)

Operating Specifications

Supply Voltage	10 Vcc
Supply Current	30 mA
Load Impedance	50
Operating Temperature	-40 to -85 °C

Notes

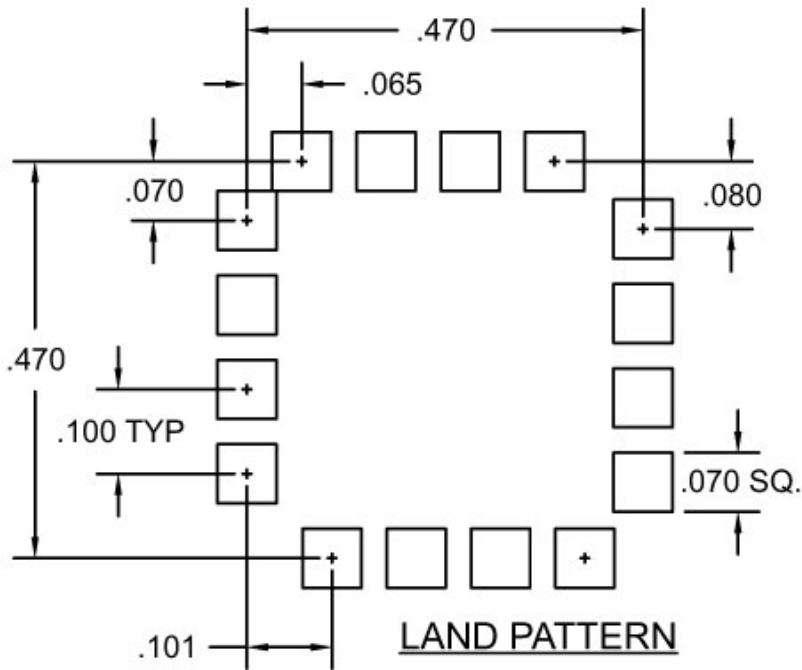
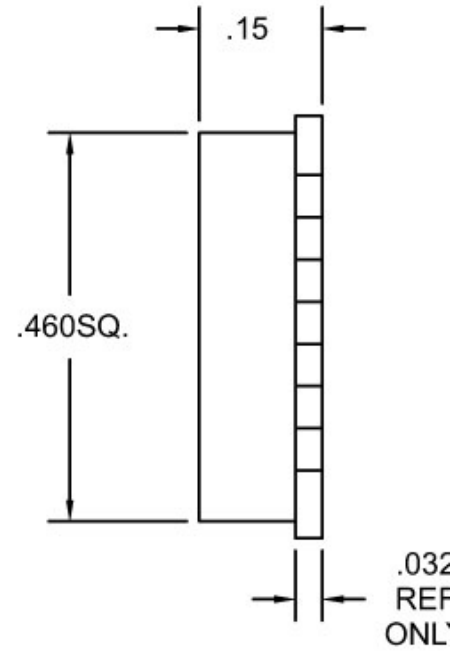
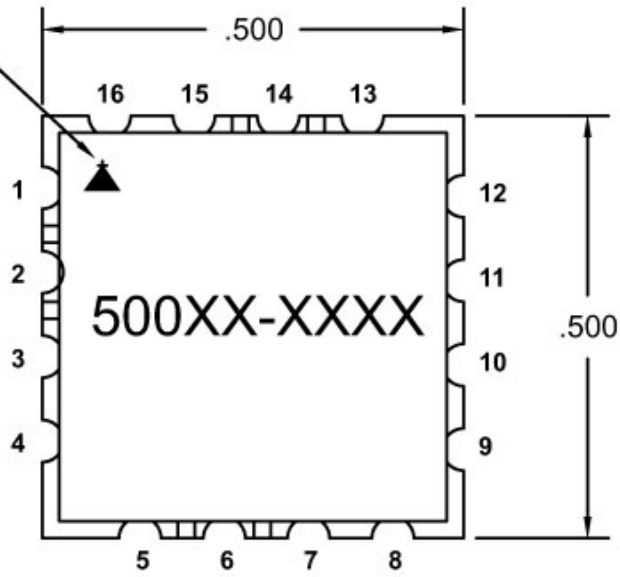


PINOUT	
2	V _{cc}
6	V _{tune}
14	RF _{out}
OTHER	GND



MERCURY COMMERCIAL ELECTRONICS

PIN 1
DESIGNATOR



PINOUT	
2	V _{cc}
6	V _{tune}
14	RF _{out}
OTHER	GND