

TERMINATIONS TYPE N (75 Ω)

DC - 4 GHz
2 WATTS

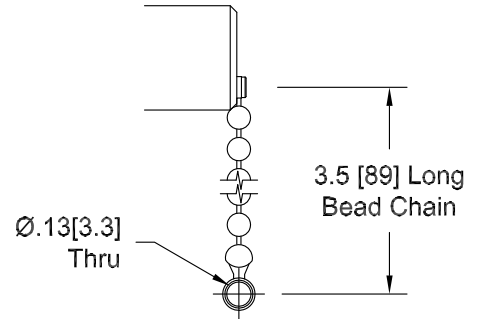


MODELS: TN040M/75, TN040F/75, TN040MC/75, TN040FC/75

SPECIFICATIONS:

Electrical:

Frequency Range _____ DC - 4 GHz
 VSWR _____ 1.20:1 Max.
 Impedance _____ 75 Ohms
 Input Power _____ 2 Watts Avg. @ +25°C
 Derated Linearly to 0.5 Watts @ +125°C
 Peak Power _____ 250 Watts Max.
 (5uSec Pulse, .05% Duty Cycle)
 Operating Temp Range _____ -65°C to +125°C



CHAIN DETAIL

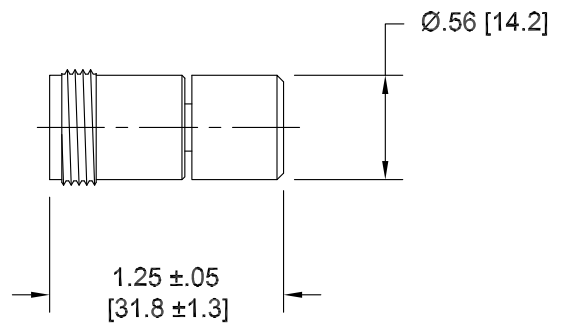
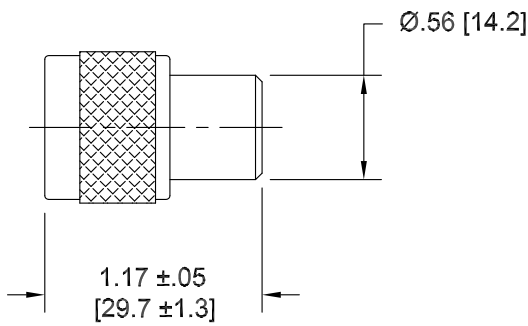
Mechanical:

*Type N Connectors _____ Passivated Stainless Steel
 Conductors _____ Gold Plated Beryllium Copper

*75 Ohm Type N Connectors Mate only with other 75 Ohm Type N Connectors
 Mating with a 50 Ohm Connector May DAMAGE Center Conductors.

Model Number: **TN040M/75**
 Type N Male Connector

Model Number: **TN040F/75**
 Type N Female Connector



HOW TO ORDER:

Model Number: **TN040XY/75**

Connector Config. _____

M = Male
 F = Female

Style _____

= No Chain
 C = Chain Included

Ordering Examples:

Model Number: **TN040MC/75**

DC - 4 GHz; Type N Male; Chain Included

Model Number: **TN040F/75**

DC - 4 GHz; Type N Female; No Chain

Model Number: **TN040M/75**

DC - 4 GHz; Type N Male; No Chain

Note: Dimensions in Brackets are Expressed in Millimeters and are for Reference Only.
 Design specifications are subject to change without notice.
 Contact factory for technical specifications before purchasing or use.