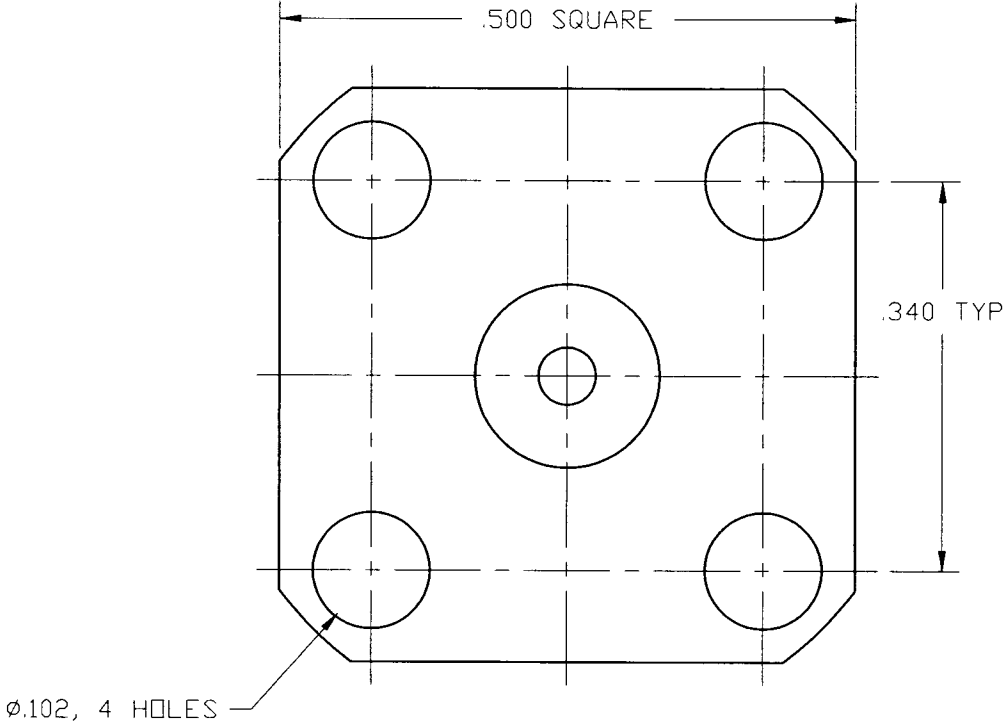
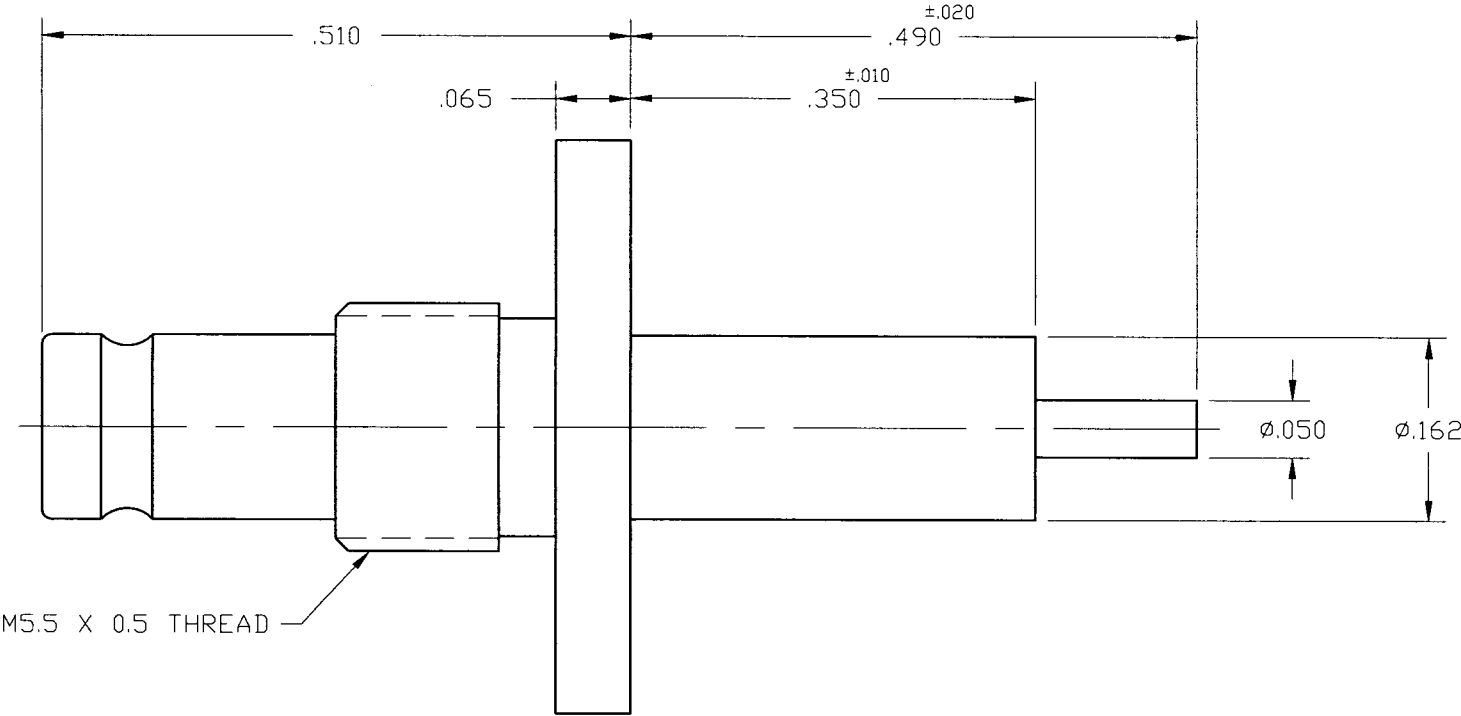


- NOTES:
- 1. DO NOT SCALE THIS DRAWING.
 - 2. MATERIAL AND FINISH:
FEMALE CONTACT: BERYLLIUM COPPER, GOLD PLATED
INSULATOR: TFE FLUOROCARBON
BODY: BRASS, GOLD PLATED

102-233-20

DRAWING NO.		REVISIONS			
REV	DESCRIPTION	DATE	ECO	APPR	
A	OFFICIAL ENG. RELEASE TO MFG.	11/11/99	43186	PB/TA	
B	SEE SHEET 1	7/28/00	43456	PB/TA	



CUSTOMER DRAWING

UNLESS OTHERWISE SPECIFIED, DIMENSIONS ARE IN INCHES AND TOLERANCES ARE: 2 PLACE DECIMAL ±.015 (0,381 mm) 3 PLACE DECIMAL ±.005 (0,127 mm) ANGLES ± 1°	MATERIAL	DRAWN P. BRENZEL		DATE 1 JUL 99		TITLE 1.0/2.3 PANEL JACK RECEPTACLE		Amphenol Amphenol Corporation RF/Microwave Operations Danbury, Conn. U.S.A. 06810	
		ENGINEER P. BRENZEL		DATE 1 JUL 99					
		APPROVED T. AUBIN		DATE 10 NOV 99					
	NOTICE - These drawings, specifications, or other data (1) are, and remain the property of Amphenol Corp. (2) must be returned upon request; and (3) are confidential and not to be disclosed to any person other than those to whom they are given by Amphenol Corp. The furnishing of these drawings, specifications, or other data by Amphenol Corp., or to any other person to anyone for any purpose is not to be regarded by implication or otherwise in any manner licensing, granting rights or permitting such holder or any other person to manufacture, use or sell any product, process or design, patented or otherwise, that may in any way be related to or disclosed by said drawings, specifications, or other data.	REFERENCE EAR 102-967298 0 FILTRONICS 179-00238-V2	CAD FILE H:\PETE\102\1023\ASSY\23320C			CODE ID 74868	DWG SIZE B	DRAWING NO. 102-233-20	ISSUE B