

ELECTRICAL

FREQUENCY RANGE _____ DC- 27 GHz

ATTENUATION ACCURACY _____ DC-18 GHz 18-23 GHz 23-27 GHz
 3, 6 dB _____ ±0.50 dB ±0.50 dB ±0.70 dB
 8, 10 & 20 dB _____ ±0.50 dB ±0.70 dB ±0.85 dB

VSWR

DC - 6 GHz _____ 1.15:1 MAX
 6 - 18 GHz _____ 1.25:1 MAX
 18 - 23 GHz _____ 1.35:1 MAX.
 23 - 27 GHz _____ 1.45:1 MAX.

INPUT POWER _____ 1 WATT AVG. @ 25°C
 DERATES LINEARLY TO 10% @ 125°C FROM 25°C

RF LEAKAGE/RFI _____ >90 dBc (>120 dBc TYP.)

PEAK POWER _____ 100 WATTS
 (5µSec PULSE WIDTH, .05% DUTY CYCLE)

IMPEDANCE _____ 50 OHMS

OPERATING TEMP RANGE _____ -65°C TO +125°C

CONFORMANCE TESTING IS 100% ATTENUATION AND V.S.W.R.
 ACROSS SWEEPED FREQUENCY RANGE AT 20-25°C

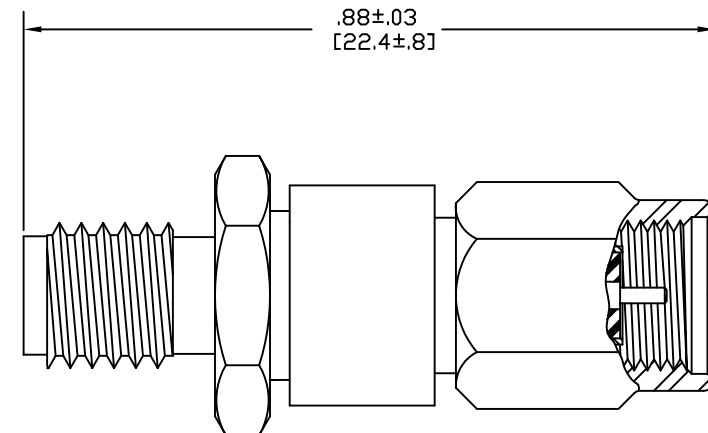
MECHANICAL

CONNECTOR BODIES _____ PASSIVATED STAINLESS STEEL
 CENTER CONDUCTORS _____ GOLD PLATED BERYLLIUM COPPER
 INSULATORS _____ PTFE (TEFLON) IAW ASTM-D1710
 RESISTIVE ELEMENT _____ THIN FILM ON CERAMIC RESISTIVE CIRCUIT
 NOT A HERMETIC SEALED UNIT
 RECOMMENDED CONNECTION TORQUE IS 7-8 in./Lbs. (0.8 to 0.9 Nm)

**PRODUCTION
RELEASE**

NOTE:
THIS DRAWING INCORPORATES
THIRD ANGLE PROJECTION.
INTERPRET IAW ANSI Y14.5-1998

REVISIONS			
REV	DESCRIPTION	DATE	APPROVED
-	RELEASE	6/2/10	T. KUHN



DRAWING PRACTICES PER ANSI-Y-14.5 MIL-STD-883C & 1000	UNLESS OTHERWISE SPECIFIED TOLERANCES ON
DIMENSIONS ARE IN INCHES AND APPLY BEFORE/AFTER PROCESSING	DIMENSIONS
SURFACE ROUGHNESS	63 ✓
FINISH	SEE NOTES
MATERIAL	SEE NOTES

UNLESS OTHERWISE SPECIFIED TOLERANCES ON	DECIMALS	INCH	MM
.X"	.03"	[.76]	
.XX"	.010"	[.25]	
.XXX"	.005	[.127]	
.XXXX"	.0005"	[.013]	
ANGLES	±0°30'		
REMOVE ALL BURRS/SHARP W/ BREAK / R OF .003" TO .0005" UNLESS OTHERWISE NOTED DIAS CONCENTRIC <.003 T.I.R.			

DRAWN D. SAUNDERS	DATE 01/01/2007
CHECKED	DATE
ENG. D. SAUNDERS	DATE 01/01/2007
THESE DRAWINGS AND SPECIFICATIONS ARE THE PROPERTY OF XMA CORP. OR OMNI SPECTRA AND SHALL NOT BE REPRODUCED, COPIED NOR USED - IN WHOLE OR IN PART - AS A BASIS FOR THE MANUFACTURE OR SALE OF OTHER ITEMS WITHOUT THE EXPRESS WRITTEN PERMISSION OF XMA CORP.	

		www.XMACorp.com		Sales@XMACorp.com	
		Powered by:			
		Omni Spectra®			
		Phone: 603-222-2256		Fax: 603-222-2259	
		150 Dow Street,		Manchester, NH 03101	
TITLE					
SSMA ATTENUATOR					
FIXED, 1 WATT					
SIZE		CAGE CODE		DWG NO.	
C		3HT76		1082-6050-DB	
SCALE		PLATING AREA		XXX	
8:1		SQUARE INCHES		SHEET 1 OF 1	