

MECHANICAL

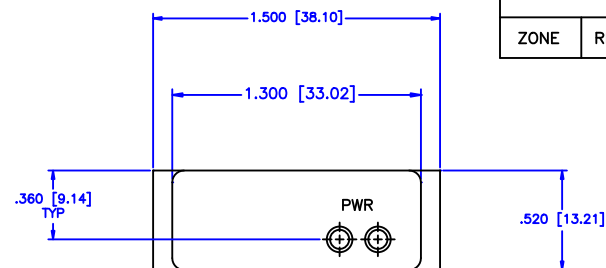
CONTACT: BREAK BEFORE MAKE
ACTUATOR: FAILSAFE
SWITCHING SPEED: 20 mSEC MAX

ELECTRICAL

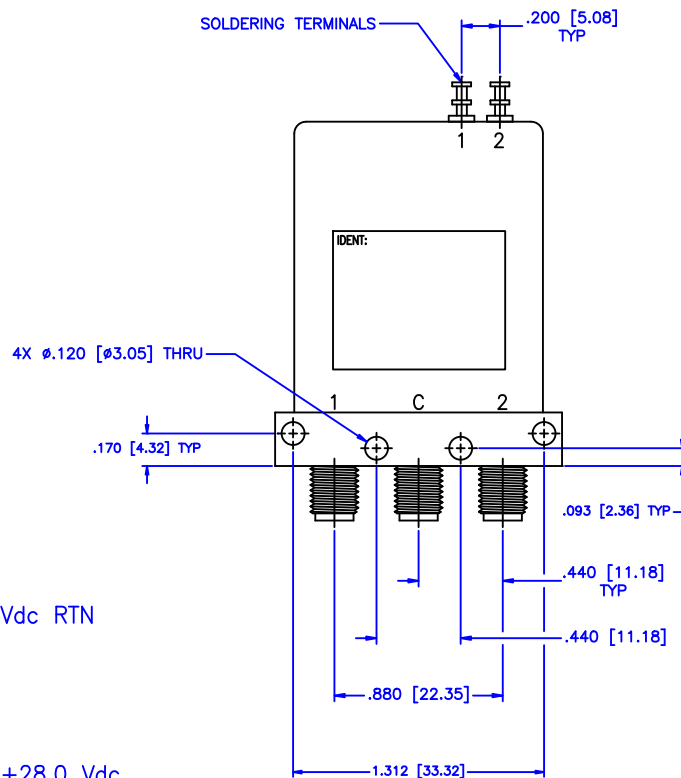
ACTUATOR VOLTAGE: 28.0 Vdc
ACTUATOR CURRENT: 0.075 A MAX @ 28.0 Vdc
POWER HANDLING: 200W CW @ 1.0 GHz

ENVIRONMENTAL

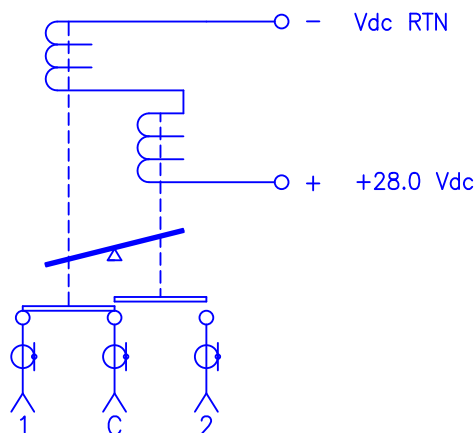
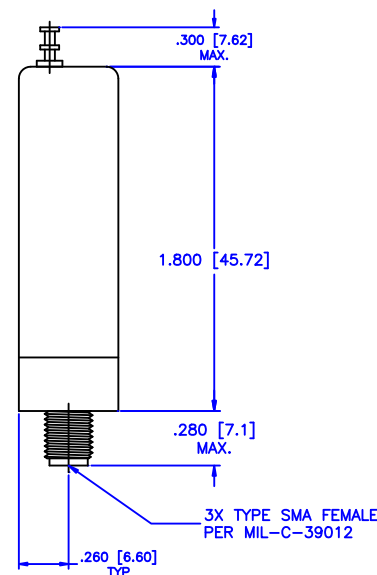
OPERATING TEMP: -54° C TO +90° C
SINE VIBRATION: 30 G'S rms
LIFE: 1,000,000 CYCLES
RANDOM VIBRATION: 20 G'S rms



SOLDERING TERMINALS
.200 [5.08] TYP



SPECIFICATION:					
FREQUENCY RANGE (GHz):	DC-2.0	2.0-4.0	4.0-8.0	8.0-12.4	12.4-18.0
VSWR (Max.):	1.20:1	1.25:1	1.30:1	1.40:1	1.50:1
INSERTION LOSS (dB):	0.20	0.25	0.30	0.40	0.50
ISOLATION (dB):	90	80	80	70	60
IMPEDANCE (Ohms):	50				



MATERIAL:

MCLI

MICROWAVE COMMUNICATIONS LABORATORIES INC.
7255 30TH AVE. N. SAINT PETERSBURG, FL 33710
TEL: (727) 344-6254 FAX: (727) 381-6116
http://WWW.MCLI.COM

SCALE: N/A
SHEET: N/A

UNLESS OTHERWISE SPECIFIED:
TOLERANCES
IN (INCHES) OR (mm) (MILLIMETERS)
FRACTIONS: $\pm 1/64$
DECIMALS: $\pm 0.01 \pm 0.005$
ANGLE: $\pm 1/2^\circ$

DRAWING TITLE:

ELECTROMECHANICAL SWITCHES

PART NO.

K3-7-F/28VDC

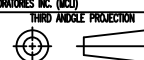
DRAWN: Paiboon Luekhamhan

DATE: 10-16-2008

APPROVED: T. Nguyen

DATE: 10-16-2008

PROPRIETARY NOTICE:
THE INFORMATION IN THIS DRAWING IS PROPRIETARY
AND SHALL NOT BE USED OR DISCLOSED WITHOUT WRITTEN
PERMISSION FROM MICROWAVE COMMUNICATIONS
LABORATORIES INC. (MCLI)



CAGE CODE:

0D2L5

SIZE:

A

REV:

N/A

DWG NO.

83950

DO NOT SCALE THE DRAWING