

SPEC SHEET

MW500-1557

2770 MHz to 2880 MHz

VOLTAGE CONTROLLED OSCILLATORS



Specifications

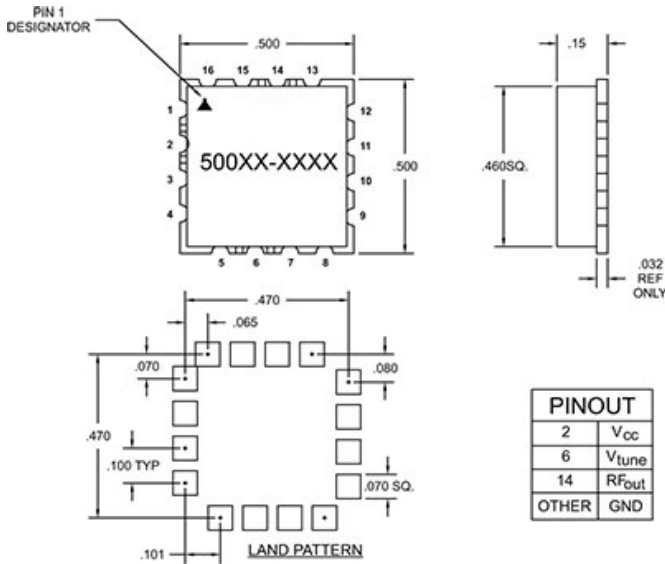
Frequency	2770 MHz to 2880 MHz
Tuning Voltage	0.5/4.5 V
Power Output	2 +/- 2 dBm
Phase Noise	10 kHz Offset -98 (typ) dBc/Hz 100 kHz Offset -120 (typ) dBc/Hz
Frequency Pushing	3 MHz/V
Frequency Pulling	5 MHz
Harmonic Suppression	-12 (MAX)

Operating Specifications

Supply Voltage	10 Vcc
Supply Current	35 mA
Load Impedance	50
Operating Temperature	-40 to 80 °C

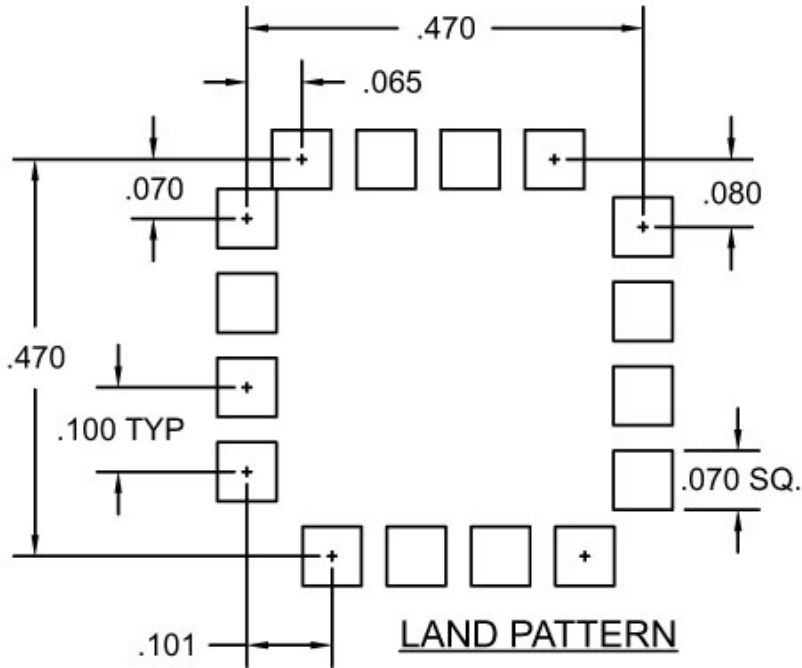
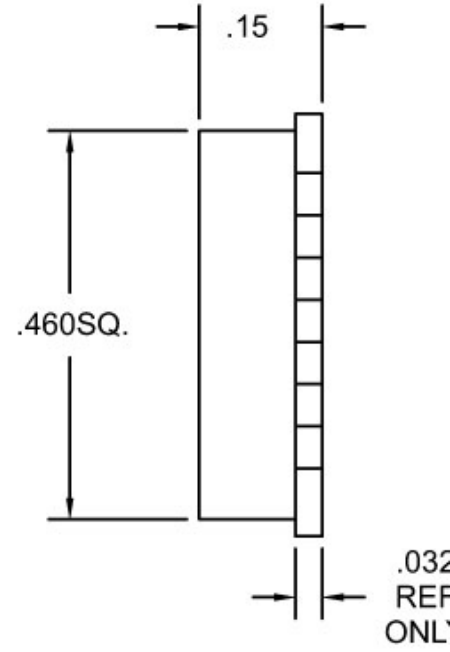
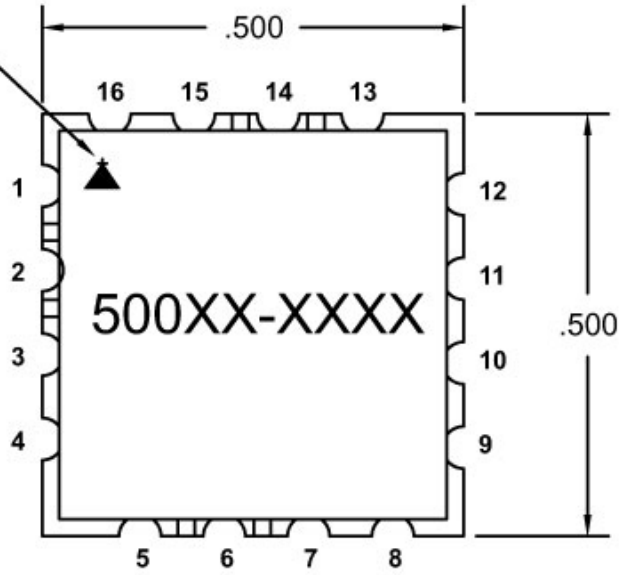
Notes

The VCO will have a 35MHz/V minimum and 70MHz/V maximum Kv for the 2750-2900MHz band width. Tuning port capacitance will be 30pF max. VCO will have no drop out from 0 to 5 volts tuning. The VCO will also be greater than 2800MHz at 3.3 volts under all c



MERCURY COMMERCIAL ELECTRONICS

PIN 1
DESIGNATOR



PINOUT	
2	V _{cc}
6	V _{tune}
14	RF _{out}
OTHER	GND