

Waveguide to SMA Coax Adaptors

Series 094 - SF

Features

- **Very Low VSWR**
- **Full Waveguide Band models**
- **Manufactured from Brass or *Aluminium**

The Flann Series 094-SF waveguide to coax adaptors offer enhanced VSWR performance over the full waveguide frequency band.

The adaptors are fitted with SMA Female connectors as standard. However, models are optionally available with male connectors, please contact our sales office for further details.

Narrowband models covering typically 20% of the full waveguide band with a VSWR of 1.05 are also available.



Model 16094-SF40

Specifications:

Model	Frequency Range (GHz)	Waveguide			VSWR (max)	*Dimensions (Brass)			Model
		WG	R	WR		A	B	C	
11A094-SF40	3.300 - 4.900	11A	40	229	1.15	52.5	74.0	28.3	11A094-SF40
12094-SF40	3.940 - 5.990	12	48	187	1.15	60.2	78.5	24.5	12094-SF40
13094-SF40	4.640 - 7.050	13	58	159	1.15	32.6	46.5	22.8	13094-SF40
14094-SF40	5.380 - 8.180	14	70	137	1.15	35.8	46.5	21.4	14094-SF40
15094-SF40	6.580 - 10.000	15	84	112	1.12	37.5	48.5	19.9	15094-SF40
16094-SF40	8.200 - 12.500	16	100	90	1.12	26.2	42.0	18.25	16094-SF40
17094-SF40	9.840 - 15.000	17	120	75	1.12	26.2	34.5	17.1	17094-SF40
18094-SF40	11.90 - 18.000	18	140	62	1.12	38.5	47.3	16.9	18094-SF40
19094-SF40	14.500 - 22.000	19	180	51	1.20	Details on Request			19094-SF40
20094-SF40	17.600 - 26.700	20	220	42	1.20	21.5	27.9	15.1	20094-SF40

ORDERING INFORMATION

Model: description

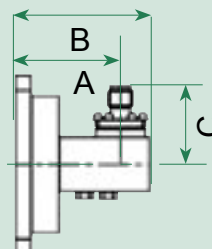
Example: Model 18094-SF40 waveguide to SMA female coax adaptor

If the adaptor is required to be manufactured in aluminium please suffix the order information with \AL

Example: Model 18094-SF40\AL

Note: models with suffix SF40 are full band units. Please see page 56 for narrowband models.

*Note The dimensions of aluminium adaptors may vary from those manufactured in brass.



Series 094-SF

For standard flange types and recommendations see pages 108 onwards